



Home Comfort You Can Depend On!

BEAT THE **HEAT** WITH A TUNE UP OR REPLACEMENT UNIT!

Commercial & Residential Service
24/7 Service • Free Estimates



The Professional's Choice

CF HEAT & AIR
580-374-3833

Lic. # 093909

Food Stuffs

Watermelon and Cantaloupe will be available at wholesale prices from Integrated Growers starting Monday 8-12-2024. Call 405-457-6455 for directions and loading appointments. NO LOAD TOO BIG OR TOO SMALL! 4/35

Guns/Knives/Bows

Model 29 44 mag, Remington 870 200th anniversary, FAIR O/U 12 ga., call 806-334-1316. 2/33

Winchester Model 62A, very good condition, \$1000 OBO, 580-682-3016. 2/33

Aimpoint Duty RDS red dot scope, Never used, still in box, \$375 OBO, 580-682-3016 2/33

Ruger 45 long colt, 7 in barrel; Ruger single 6 32 magnum, 6 in barrel; Ruger 22 pistol automatic 580-548-7780. 1/32

Household

Maytag Front load Washer and Dryer set. Excellent shape, minimal use, \$800. Lana 405-222-8628 Danny 580-497-6481. 1/32

Hunting

New deer rifle, Ruger, 270 plus scope & case, plus 1 weekend on proven deer timber, northern Oklahoma, \$650, 580-541-1112.

Tree Services

Holman Tree Service

completely insured tree service - offering tree removal, trimming, pruning and stump removal at a reasonable price, call or text 580-715-0680 or 580-445-9234.

Keith's Tree Trimming, hedges and bushes. Seasoned/green firewood, delivery available, 580-660-0402. 4/33

Colorado Peaches and Pears are headed to a town near you!



WWW.CUNNINGHAMPEACHES.COM

f Cunningham Peaches @cunninghampeach

If you have never had a Cunningham Peach, you are in for a treat! Grown in Palisade, Colorado, our juicy peaches are tree ripened, hand-picked, and delivered to you in our refrigerated semi-trucks.

PEACHES \$50, PEARS \$39 & HONEY \$15/JAR - ASSORTED JAMS \$8/JAR

Altus - Wed. Aug 7th

Elk City - Sat. Aug 10th

Enid - Wed. Aug. 21st

Lawton - Wed. Aug 28th,
Mon. Sept. 9th

Fairview - Fri. Aug 16th

Kingfisher - Fri. Aug 23rd

Weatherford - Fri. Aug 9th
Wed. Aug 28th

Woodward - Sat. Aug 17th

Alva - Tues. Aug 27th

ALL TIMES ARE 7 A.M. UNTIL SOLD OUT!!!

*For more information
call / text 580-243-9517*

POP & SONS INSULATION

WEATHERFORD, OKLAHOMA

- NEW OR EXISTING •
- RESIDENTIAL OR COMMERCIAL •
- **FREE ESTIMATES • FULLY INSURED •**
- Batts • Netting Spray in Walls
- Blow in Attic • Fireplaces

Polyeurofoam for Metal Buildings

Serving Oklahoma for over 40 Years

1-866-327-0958

580-774-5230 • 580-254-8393



JASON JONES PLUMBING

301 N. 4th St.
Clinton, OK 73601

RESIDENTIAL & COMMERCIAL

580-323-0405

580-214-0404

jasonjonesplumbing@gmail.com



Your Complete
Technology Solution

- + Computers & Networking
- + Remote Managed Services
- + Hosted Cloud Services & Security
- + Remote & Onsite Support
- + Cybersecurity Awareness

Fixing What Others Mess Up Since 1981.

Innovative Technology Ltd

580-243-1559 www.itlpros.com



Protect your home from the elements with steel roofing!



HAIL



WIND



WILDFIRE



Made in Oklahoma City!
Call today to learn more or receive an estimate.
High Performance - Structural Quality
Contractors and DIY welcome

405.942.7878

www.GideonSteel.com

FINE LINE AUTO SALES



4713 W. 3RD, ELK CITY
580-225-9111 or 580-303-8291 Cell

**WE'LL PAY GOOD MONEY
FOR YOUR VEHICLE!**

2018 Ford Expedition, Limited, AWD, Extended Length, Immaculate,
Both Keys & Books, 1-Owner, Non-Smoker.....**\$28,995**

FINANCING AVAILABLE - W.A.C.



\$29,995

2019 FORD F150
Crew Cab, Bed Cover, Michelin
Tires, 60K Miles,
1-Owner, Mint Condition



\$18,995

2014 MERCEDES BENZ
ML 350, AWD 4-Matic, 3.5 V6, Owner's
Vehicle, New Tires, Non-Smoker, Super
Clean & Nice



\$8,995

2004 TOYOTA COROLLA S
Automatic, A/C, New Tires,
Both Keys & Fobs & Books,
1-Owner, Trade-in, Very Nice



\$28,995

2018 FORD F150
4X4, Off Road, 5.0,
Non-Smoker, Super Clean, 90K Miles,
New Tires



\$8,995

2006 MINI COOPER
R52 Convertible,
New Tires, Low Miles,
Non-Smoker



\$12,995

2015 NISSAN ALTIMA 2.5 S
New Tires, Local Trade-In, Non-Smoker,
Well Maintained,
Extra Clean



\$29,500

2017 GMC SIERRA 1500
SLT Z71, Fully Loaded, Both Keys &
Books, Non-Smoker, New Tires,
Extra Nice



\$13,995

2015 JEEP RENEGADE LATITUDE
Local, 1-Owner Trade-in, New Tires,
Non-Smoker, Both Keys & Books,
Very Nice



\$28,500

2012 GT500 SHELBY
Kona blue, Immaculate, Garage Kept,
Super Charged 6 Speed, 1 Owner, New
Tires, Both Keys & Books



\$36,995

2021 Chevy Silverado 1500
Duramax, 90K Miles, New Tires,
1-Owner, Like New, Immaculate,
Remainder Factory Warranty

Services



The Western Goddess Photography is offering something special: **ON-LOCATION Back-to-school Mini sessions at your child's school in Beckham County, OK on August 24, 2024!** Extra Travel Fees Apply for Out-Of-County Travel. What's Included: \$80 sessions, 30-minute session, On-location at your child's school, 5 edited digital images of your choice, additional edited pictures available at an additional \$5/picture, cute props like chalkboards, books, and more! Please reserve your spot today by contacting us on Facebook by scanning the QR code or texting 580-339-6867 or 580-729-1949.

2/33

www.thepennynnews.com

T&R Excavation. & Construction for all your earth-work needs. Level pads, pond building and cleaning, tree removal, fence row clearing, demolition, and junk removal/ cleanup. Free estimates OK & TX, call Ryan (580) 374-1975, if no answer, leave a message.

16/33

Wade Dump Trucking, sand, dirt and gravel delivery, 580-799-2652.

24/51

Certified retired teacher, will keep toddler/baby in my home Mon-Fri, for \$200/week, 405-300-3631 near 39th & Portland. 4/32

Coarse sand for sale! This product is too coarse for our customer base and will have some pebbles scattered throughout. This sand has been thoroughly washed so it will have very little if any clay content. It is silica sand that is 40 mesh or larger in size. \$7 per ton, we can help facilitate delivery if you prefer. Please email Cody Dukatnik- cdukatnik@sp-silica.com and/or Jason Errthum- jerrthum@sp-silica.com for any inquiries. Signal Peak Silica, 243453 US HWY 270, Oakwood, OK 73658 4/34

CONTENTS

Auctions..... 3
Auto Parts..... 5
Automobiles..... 19
Dogs/Cats.... 18
Events..... 5
Farm Equip.... 3
Firewood..... 5
Foodstuffs..... 1
Rent/Lease 5
Garage/Estate 8
Guns..... 5
Hay/Feed..... 16
Health/Fitness 5
Help Wanted 12-13
Horses 14
Household ... 16
Hunting 1

FINE LINE
ROUTE 66
AUTO SALES
Page

Today in Ag
Page 4-7

TRADIO
Page

MCKINSEY
Ford
Page

Frontier
Page

Insurance..... 13
Livestock..... 9
Misc..... 16
Mobile Homes 5
Motorcycles 5
Notices..... 13
Oil/Minerals... 14
Poultry 7
Real Estate ... 15
Recreation 5
Seed 7
Services..... 2
Trailers..... 11
Tree Services 11
Want to Buy .. 15
Weather 4

GOBER Post Frame Buildings

Shops, Garages, Houses, Agriculture, Commercial

1-405-595-0770

30'x40'x10' - **\$20,400**

30'x40'x12' - **\$22,600**

30'x50'x10' - **\$24,600**

30'x50'x12' - **\$26,700**

With 4" Concrete,
Fully Insulated,
1 Commercial Overhead,
1 Entry Door, #1 29 Ga.
40 yr. Painted Metal,
Built on Your Level Site,
Additional Sizes Available
Mileage or Higher Concrete

Protect Your Home And Property!!! Prices May Apply
Make Sure Your Contractor is Following The Law.
Ask For General Liability and Workers Comp. Insurance

www.goberconstruction.com

SAVE TIME & MONEY DURING OUR HOT SUMMER SALES EVENT

Purchase any in stock Hustler Raptor X or Raptor XD and get either \$200 off the price of the mower or get \$250 of Dewalt lawn & garden battery powered items FREE!



DJ'S RENTALS & SALES, INC
580-225-1400 • www.djsrental.com
Customer Text Line 580-799-7214

911 S Main St, Elk City, OK



NEW ROOFING

Keep It Simple. Make It New.

ROOFING • SIDING • GUTTERING

FREE ESTIMATES!

FULLY INSURED

HABLAMOS ESPANOL



LIC#80000621

580-309-4323
newroofingok.com

ALEX EWBANK WATER WELL DRILLING 4TH GENERATION INDUSTRY PROVIDER

PUMP & GENERATOR RENTAL
OILFIELD
FARM

IRRIGATION

RESIDENTIAL

SUBMERSIBLE PUMPS

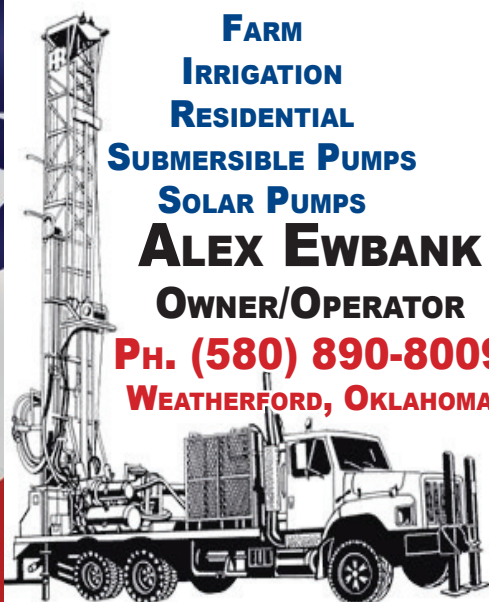
SOLAR PUMPS

ALEX EWBANK

OWNER/OPERATOR

PH. (580) 890-8009

WEATHERFORD, OKLAHOMA



VETERAN DISCOUNT

Farm Equip.

WANT TO BUY John Deere tractors, running or not, 580-243-8610.

WANTED: JD square balers, 348-347-346-336-224-214 any condition, 405-641-7728. 27/2

Wanted: Tractors dead or running, 2WD or 4WD, any kind, any size up to 2023 models, 405-641-7728. 27/2

Old farm tractors: 1951 International M & 1953 Super M, both LP, in good running condition, with a 6' Bush hog, \$2,500 for all, Miami, Tx- 828-707-6590. 4/32

30' rear-fold drag harrow - \$5,000 obo, 15' Sunflower single fold sweep plow, Cordell area, 580-774-9226. 4/32

'97 Guthrie Walking Floor trailer 48'x102"x88" air ride-electric tarp, \$14,000, 580-331-8746. 4/34

For Sale: Woods 7' box blade, 3 point, model HB-84, GR 22' Goose-neck Tandem axel single tire, 8' ramps, John Deere Model 100 drag type sweep, 10 Shank, 405-850-0494. 2/32

30' rear-fold drag harrow - \$5,000 obo, 15' Sunflower single fold sweep plow, Cordell area, 580-774-9226. 4/35

For sale: MF1745 round baler, 4X5 string, only rolled few hundred bales, 580-774-4403. 4/35

Auctions

Check out XIT Auction calendar in this week's publication! 4/33

MCKINSEY

2021 CHEVY 3500 SPECIAL OFFER!



\$59,800

Crew 4x4 LTZ, 1-Owner, Low Miles, Duramax, Loaded!

2023 FORD F150 RAPTOR REDUCED PRICE!



\$73,800

4X4 Ultimate, 1-Owner, Low Miles, Hard Loaded!

2014 JEEP CHEROKEE TRAIL HAWK VERY CLEAN!



\$17,440

4x4, Local Trade, Leather, NAV, Roof, Loaded!

2020 CHEVY 2500 CREW 4X4 SPECIAL OFFER!



\$45,750

All Power, Custom Hay Bed, Crown Line Cake Feeder, & More

2023 FORD F350 PRICE DROP!



\$63,800

4x4 Crew XLT, Power Stroke, 1-Owner, Loaded w/ Extras

Clinton, OK
580-323-0258
800-725-0258



2020 FORD F150 CREW XLT NICE TRUCK!



\$28,880

4x4, 5.0, Leather, 1-Owner, Luxury Pkg. & More!

2014 FORD F150 CREW 4X4 PRICE DROP!



\$22,700

Rocky Ridge Conversion, Low Miles, 1-Owner, Loaded

2015 GMC 2500 CREW DENALI HURRY IN!



\$23,770

4x4, Leather, Local Trade, Loaded w/ Extras

2023 FORD F450 LARIAT 4X4 REDUCED PRICE!



\$85,700

Crew, Power Stroke, 1-Owner, Very Low Miles

2021 FORD F250 XLT SPECIAL OFFER!



\$39,500

Crew 4x4, Leather, Local Trade, Loaded w/ Extras

WWW.MCKINSEYMOTORS.COM

THE NO FLY ZONE

- Reduce spread of disease & infestation
- Eliminates man power
- Increase daily rate of gain
- Reduce costly stress of cattle
- No product waste
- Improve overall health on cows and calves
- Saves pressure on fences

CAPITALIZE ON YOUR INVESTMENT BY PROTECTING YOUR HERD FROM EXTERNAL PARASITES ALL YEAR LONG!

"Mike has a simple formula to prove the value of the oiler. "If the cattle aren't swatting flies, they are eating grass, making milk and putting pounds on the baby. And if the babies aren't swatting flies, he's retaining that weight to go to market with. That's all you've got to sell is weight of the cow."

Mike Nesmith-Elk City, Oklahoma

Call Mike Nesmith 580-303-8770
WWW.U SALEWISCATTLEOILERS.COM



**First National Bank
& Trust of Elk City**
"There is a Difference!"

Today in Ag

**Listen to the Long Range
Weather Forecast at 12:20PM
Mon.-Fri. on KECO 96.5FM**

brought to you by



LOCAL 7-DAY WEATHER FORECAST

THURSDAY	FRIDAY	SATURDAY	SUNDAY	MONDAY	TUESDAY	WEDNESDAY
Partly Cloudy Hi 102 Lo 72	Partly Cloudy Hi 87 Lo 70	40% Precip Hi 87 Lo 65	Sunny Hi 101 Lo 71	Sunny Hi 97 Lo 78	Sunny Hi 97 Lo 76	Sunny Hi 94 Lo 77

Unlock Radiant Skin with Vitamin Infusions by Prime Aesthetics



Discover how IV infusions at Prime Aesthetics can alleviate symptoms like hangovers, fatigue, dehydration, and inflammation. Experience stress relief, improved immunity, and restored balance.

Scan the QR code



Locations in Elk City & Yukon OK

to watch now!

Cats/Dogs/Pets



ASDR registered Toy Australian Shepherd pups, ready 8/2/24, red tri males with some blue eyes, raised in home, 580-210-9575. 8/32

10wk old registered Maltese pups UTD on shots & dewormer, vet checked. 1 male 2 females, call or text 580-254-1102 for pictures & more info. 3/32

Jens Furfert Yorkies, males ready Aug 18th, shots, wormed tails dewclaws removed, vet checked, \$800, (580)660-1019. 3/32

ACA registered French Bulldogs, vet-checked and utd-on-shots, 17-weeks-old, home-raised, NOT A MILL, 1 male & 2 females \$1,000, 405-868-6872. 6/34

Mini Aussies- blue, merles, black tris, \$150-\$200, 580-729-2387, leave a message. 2/32



FREE PUPPIES: Bull-dog-Boxer mix, they are very quiet and love water, (very playful), 580-497-6810. 4/34

AKC Pembroke Welsh Corgi puppies for sale. We have 2 black male tri's - 2 female sables - 1 female blueie. Beautiful puppies that are triple clear by parentage and all carry the blue gene. For more information call 580-334-0030. 4/34

AKC Great Danes. 2F, 3M, Black, up to date on shots, \$500, 405-448-1528. 3/34

(6) Livestock Raised 1/4 Great Pyrenees 3/4 Anatolian Shepard puppies, both set of shots and wormed. Ready to go! Call/Text 469-585-7151

Havanese puppies, chocolate, sable, and white, 2m, call 580-243-8416. 4/35

Privately owned dog kennel was USDA and OK registered, Retired breeding dogs free, needing good homes, kennel raised, most are 6 years or older. If interested please call 580-682-9036. 3/34

SCAN FOR DIGITAL COPY



ThePennyNews.com
NEW CLASSIFIEDS ADDED DAILY



Free Kittens, 8 weeks old, beautiful colors, litter box trained, can be inside or outside. 2/33

Privately owned dog kennel was USDA and OK registered, Retired breeding dogs free, needing good homes, kennel raised, most are 6 years or older. If interested please call 580-682-9036. 3/34



AKC Boston Terriers, 9-week-old, high quality, UTD/RTG, genetics guaranteed, solid food, crate trained, in-home raised, dewclaws removed, 2 males & 4 females, beautiful, smart, and social, potty-trained started, 580-571-2128. 4/35

ini Aussies- blue, merles, black tris, \$150-\$200, 580-729-2387, leave a message. 2/32

SOCIAL SECURITY DISABILITY BENEFITS

REPRESENTATION
AT ALL LEVELS FOR CHILDREN & ADULTS

**OWEN/PARVIN
& ASSOCIATES, INC**

580-237-3705

NO RECOVERY • NO FEES

www.owenparvin.com

STORM DAMAGE?

We can help with your construction needs!

Martin Contracting



ROOFING • SIDING & BARN
DAMAGE • COMMERCIAL
ROOFING - TPO & PVC

ASSISTANCE WITH YOUR
INSURANCE COMPANY

25 YEARS WORKING IN
WESTERN OKLAHOMA

WE OFFER NEW
CONSTRUCTION AS WELL
AS METAL BUILDINGS,
DECKS, & PAINTING

OVER 1,000's OF

SATISFIED CUSTOMERS



(580) 761-3688

Oklahoma Lic. # 0631

BOB BEAUCHAMP Sand & Gravel llc



**FILL SAND • FILL DIRT • ROCK
GENERAL HAUL-OFF**

Serving all of Western Oklahoma!

580-323-1704 or 580-214-0076

LIPSCOMB



ELK CITY & SAYRE

LIPSCOMBDEALERSHIPS.COM

JD Tractor Repair

Certified John Deere Technicians

Specializing in John Deere Tractors



**Full Service Repair
On Site Service Calls**

Jeff Hall, 580-821-0399

David Tucker, 580-799-2726

¾ Mile S. of Canute 4-way Stop • 580-472-3322

CONFUSED ABOUT MEDICARE??

ARE YOU TURNING 65??

Medicare Questions
Medicare Supplements
Postal Employees - PSHB

OKLAHOMA, ASK ABOUT THE NEW BIRTHDAY RULE

Chris J. Keefe
License Insurance Agent • 30yrs experience
Call: (806)419-4250

 **Call Today!**

FUSION AG
SEEDS SOILS & SOLUTIONS

Providing custom seed blends to meet your needs

We have Fall Cereals and Legumes, such as Elbon Rye, Triticale, Hairy Vetch, and more!

Mountain View, OK
580-330-0296
LC#08012921

www.texasgunandknifeshows.com

GUN SHOW Like us on Facebook!

Amarillo Civic Center, July 20th & 21st

Abilene Convention Center, August 17th & 18th
Kerville Expo Hall, Sept. 14th & 15th

Sat. 9-5 & Sun. 10-4 - Dealers Call (830)285-0575



Barbwire & Lace

Refurbished Furniture • Home Decoration • Yard Art

3109 W. 20th St., Elk City, OK • 580-303-0674

Auto Parts

For Sale: Factory front and rear bumper for a 2020 2500-HD Silverado, like new, asking \$600, call 580-471-7034. 4/32

Rebuilt Chevy 4L60E, \$850 and up, with warranty 405-872-8387. 4/32

Rebuilt GM turbo 400 transmission and warranty, \$550 with same exchange, 405-872-8387.

Rebuilt GM turbo 350 transmission and warranty, \$550 with same exchange, 405-872-8387.

Rebuilt GM 700 R4 transmission and warranty, \$650 with same exchange, 405-872-8387 4/32

Rebuilt Ford, Dodge, Jeep rear wheel drive automatic transmission \$550 and up with warranty, 405-872-8387. 4/32

Health/ Fitness

2 Electric wheelchairs inherited, wanting to sell, call/text 405-868-6872 2/32

For Rent/Lease

Nice, neat RV lots for rent, 30 amp & 50 amp available, water, sewer, and trash, green grass areas, S. Merrit Road, 580-821-2392. 4/32



"The Clinton" RENOVATED historic apartments. 1bed/1bath with new cabinets, doors, windows, kitchen, and bathroom, Stainless steel appliances, 309 South 6th Street, \$600/month, \$600/deposit, \$25/application fee, 405-250-1847. 4/35

thepennynews.com

IMMEDIATE OPENINGS AVAILABLE

THE TOWERS APARTMENTS

- **FIRST MONTHS RENT IS FREE**
- Low Income Housing for the elderly and disabled.
- All Utilities Paid
- Rent Based on Income
- Laundry Facility
- Handicapped Accessible
- Friendly Environment
- Section 8/Tax Credit Housing

 101 E COMMERCE ALTUS, OK 73521 **580-482-2650**

Events

Looking for Flea Market Vendors for the Route 66 Flea Market in Elk City October 4-6, 2024, email wohsfleamarket@gmail.com for more details 10/40

Guns/Knives/Bows

Model 29 44 mag, Remington 870 200th anniversary, FAIR O/U 12 ga., call 806-334-1316.

Winchester Model 62A, very good condition, \$1000 OBO, 580-682-3016. 2/33

Aimpoint Duty RDS red dot scope, Never used, still in box, \$375 OBO, 580-682-3016 2/33

Ruger 45 long colt, 7 in barrel; Ruger single 6 32 magnum, 6 in barrel; Ruger 22 pistol automatic 580-548-7780. 1/32

Firewood

Keith's Tree Trimming, hedges and bushes. Seasoned/green firewood, delivery available, 580-660-0402. 4/33

Recreation

2004 Everest 5th wheel RV, 32', good shape, no leaks, 3 slides, sleeps 4, \$15,000 obo, 580-821-6554. 4/33

For sale: 2010 35-foot Jayco Eagle 5th wheel, used very little, barn kept, 580-774-4403. 2/32

2003 Keystone Cougar bumper-pull 35', 580-727-1819. 4/34

RV lots for rent. Short/long term available, call 405-808-2556. 4/35

Mobile Homes

3Bd/2Ba Homes for sale. 1 in Elk City & 1 in Weatherford. Seller financing available, starting at \$795 monthly. Call 405-808-2556 4/35

Motorcycles

2006 HD Dyna Wide Glide 4776 miles \$8,500; 2009 HD Road Glide CVO performance tuner, custom exhaust 3427 miles \$17,500; Call 580-225-4880. 4/35

Small Stem Alfalfa Horse Hay

1,600 2x4 Square Bales @ 60 lbs/each

21.8% Protein Content

From a NEW meadow in Tipton Valley

Put Up Clean

Red River Red Angus Cody Cribbs (580) 481-9449
Loretta Cribbs (580) 481-0339

RUSSELL'S

AIR CONDITIONING & HEATING

- Elk City Area -

580-210-8008

Bonded & Insured - Lic#038926

Custom Paint For Your Motorcycle.
We Paint Motorcycle Parts! FREE ESTIMATES!

Collision Repair. All Makes & Models.
All Insurance Providers & Fleet Services
Windshield Replacement. Hail Damage.
Computer Color Matching.

SKUNK WERX FULL-SERVICE PAINT & BODY SHOP



580-928-5005
201 West Kennemer
Sayre, OK

★ PAINT & BODY ★

BECAUSE NOTHING BEATS A WEEKEND ON THE WATER



As your local Farmers® agent I can offer you a boat policy that helps cover the things that matter when you're out on the water, so you can just enjoy the waves

 **Misty Gossen**
Agent

Call me Today!
580-323-8444





Today in Ag

Grasshopper story resonates with readers



Jerry Nine Woodward, OK

I know that I have at least one person reading this article. After putting in the article that I had a lot of grasshoppers on the farm so if anyone had a lot of chocolate maybe we could team up and make some money, I received a box of chocolatecovered grasshoppers in the mail this week, and it also had a chocolate covered

scorpion.

So me—being the giving person that I am—I thought I should share them with my friends. I asked a friend if he wanted a chocolate. I said there are white and dark chocolates. He said, “Give me the dark.” I did good at keeping a straight face until I heard crunch crunch. Then I started smiling and soon was laughing. He said, “What? What!!” The second what was more demanding like “What did you do?” He started spitting like he had just had his first taste of tobacco as a child.

This morning I took the rest of these delicacies to breakfast as I was sure one of those cowboys would want to try them. I said to the waitress that I would give her \$20, then \$40 to try one. She said not even for \$100. Then I told another guy I would do the same for him. I said, “Your wife would be proud of you if you made \$40 this morning.” He said, “I have been married 36 years, and at this stage there’s not too much that will impress her.”

I texted my older sister this morning and said I bought you some chocolates for being so nice. She responded, “That’s scary. Is it cow poop?” She added, “I may be slow but not that slow.”

On Tuesday, October feeder futures were at \$254.70. For a long time, October was the highest feeder future market, but now August, September and May 2025 are higher. Most sale barn prices for feeders and calves have not shown much decline in prices. I think most feedlots realize the feeder cattle numbers coming to the sale are limited, so prices have stayed strong.

Last Thursday morning I walked into the cafe at the sale barn before the auction started. There was another man facing the opposite direction who buys cattle there every week. I acted like I couldn’t see him and bumped into him on purpose and said, “Oh, sorry. I couldn’t see you.” This buyer is definitely confident to say the least on whatever he thinks. As I walked over to a table and sat down another comical man said, “If you couldn’t see his body, you ought to have been able to see his head.”

Editor’s note: The views expressed here are the author’s own and do not represent the view of High Plains Journal. Jerry Nine, Woodward, Oklahoma, is a lifetime cattleman who grew up on his family’s ranch near Sapulpa, Oklahoma.

ELK CITY LIVESTOCK AUCTION



South Hwy. 6 • Elk City, OK
I-40 Exit 38
SALE EVERY FRIDAY • 9AM
580-225-6754

- MARKET SAMPLES -

AUGUST 2, 2024 - 1598 Hd Ct.

STEERS			HEIFERS		
Weatherford	9	334 \$410.00	Canute	6	33 \$346.00
Briscoe	7	374 \$372.50	Crawford	15	358 \$330.00
Elk City	4	418 \$352.00	Alanreed	9	373 \$306.00
Cheyenne	5	476 \$324.00	Carter	4	411 \$300.00
Mobeetie	16	506 \$315.00	Sayre	4	430 \$310.00
McLean	4	514 \$290.00 ¹	Willow	14	460 \$288.00
Sweetwater	4	526 \$290.00 ¹	Butler	4	518 \$261.00
Elk City	3	573 \$277.00 ¹	Willow	9	522 \$268.00
Canute	6	573 \$286.00 ¹	Elk City	9	545 \$256.50
Sayre	4	574 \$294.00	Sayre	18	551 \$273.00 ³
Elk City	11	592 \$282.00	Mangum	7	554 \$246.00
Elk City	7	605 \$284.50	Wellington	12	574 \$248.00
Cheyenne	16	613 \$283.00	Hinton	4	620 \$246.50
Elk City	3	620 \$276.00 ¹	Canute	5	659 \$235.00 ²
Hobart	7	631 \$255.00 ¹	Elk City	5	673 \$234.50 ²
Cheyenne	18	641 \$269.85	Lefors	4	676 \$224.00 ²
Sweetwater	5	654 \$263.00	Seymour	11	700 \$235.00
Elk City	18	661 \$258.00	Shamrock	6	763 \$229.00
Reydon	6	734 \$239.75 ¹	Clarendon	5	898 \$199.00
Canute	9	741 \$254.00	Reydon	4	1071 \$175.00

Butcher Cows: \$99 - \$169
Butcher Bulls: \$120 - \$196

Bred Cows: \$1,335 - \$2,675
Pairs: \$1,400 - \$3,000

¹Cutter Bulls, ²Calves, ³Weaned, ⁴Fancy, ⁵New Crop

580-225-6754
SALE EVERY FRIDAY - 9AM

To consign or for info,
call Brandon Hickey, 580-497-6095

SOD BY SHERRY®

Your Total Quality Oklahoma
Sod Source for 41 Years and Rolling!

9 Iron® Astro™ \$320
BERMUDAGRASS

TAHOMA 31® \$460
BERMUDAGRASS

Justice® Fescue \$420

Palishade® Zoysia \$720
Coverage: 500 sq. ft. per pallet

Order Online • Installation Available

www.sodbysherry.com

405-354-7926

EL RENO STEEL

3399 E. HWY 66 - El Reno, OK
405-262-7077

WE NOW HAVE PORTABLE PANELS AND H-BRACES

1 1/4 PIPE GATES
4 FT. - 6 FT. - 8 FT. - 10 FT.
12 FT. - 14 FT. - 16 FT. - 18 FT. - 20 FT.

2 3/8 PIPE GATES (4-FT. TALL 5-RAIL)
8 FT. - 10 FT. - 12 FT.
14 FT. - 16 FT. - 18 FT. - 20 FT.

2 3/8 PIPE GATES (5-FT. TALL 6-RAIL)

CONTINUOUS FENCE
2 3/8-IN. STRUCTURAL PIPE
2 7/8-IN. STRUCTURAL PIPE

Angle Iron • Rebar • CEE Purlin • Channel • Beams • Sq. & Rec. Tubing • Expanded Metal • Pipe • Diamond Floor Plate • Plate • Sheets • Cable Clips • Cable Springs • Pipe Caps

METAL BUILDING PRODUCTS

SALE EVERY MONDAY - 10AM

Call in your consignments to us soon!

WESTERN OKLAHOMA LIVESTOCK AUCTION

August 12: From Foss 500 long weaned 5-6 wt calves and from Arapaho 40 long weaned 6 wts

August 5, 2024 - 1349 HD

Steers			Heifers		
Crawford	3	355 \$332.00	Hammon	5	345 \$314.00
Duke	11	387 \$353.00	Putnam	7	461 \$270.00
McLean	4	408 \$310.00	Butler	11	495 \$273.00
Elk City	3	452 \$285.00	Cordell	4	506 \$257.00
Canute	13	454 \$330.00	Hammon	12	536 \$260.00
Weatherford	3	488 \$266.00	Hobart	7	539 \$261.00
Custer City	9	512 \$269.00	Cordell	5	551 \$250.00
Weatherford23	610	\$282.00	Corn	6	556 \$290.00
Lone Wolf	6	654 \$227.00	Briscoe	16	567 \$268.00
Gotebo	14	716 \$255.00	Weatherford	3	608 \$223.00
Weatherford21	719	\$257.00	Cordell	3	612 \$249.00
Clinton	27	740 \$249.25	Minco	7	613 \$247.00
Sweetwater	19	838 \$234.00	Weatherford	4	654 \$243.00
Canute	80	955 \$226.25	Sweetwater	3	740 \$233.00
Erick	14	961 \$224.50	Canute	82	809 \$228.00
Canute	91	1092 \$211.00	Canute	108	918 \$216.50

Bred Cows -
Pairs - \$2,350 - \$194

Butcher Cows - \$47 - \$164
Butcher Bulls - \$145 - \$194

WWW.WESTOKLIVESTOCKAUCTION.COM
23031 N FRONTAGE RD CLINTON, OK • I-40 EXIT 71
BRANDON HICKEY 580-497-6095



**First National Bank
& Trust of Elk City**
"There is a Difference!"

Today in Ag

JIMMY'S TIP OF THE WEEK

John Deere stands behind all their equipment.

Except for their Manure Spreader

with Jimmy Clark

LISTEN LIVE

MON-FRI @ NOON!

kecofm.com/today-in-ag

KECO 96.5

100.1 KWFY



LIVESTOCK NUTRITION DISTRIBUTOR
(BETTER FEED BETTER RESULTS)
CATTLE-SHEEP-GOAT-HORSE



AGRA TECH

It's time for fall cover crop seed! Now accepting contracts for winter cattle cubes.

405-370-9322 580-225-0317



WIND AND RAIN
CATTLE MINERAL

ALTOSID
IGR

720 S. MAIN ST. ELK CITY, OK

www.elkcitycoop.com

Seed



WESTBRED CERTIFIED SEED WHEAT, 2024 Varieties Available, WB 4739 CoAxiom, WB 4445 Clearfield, WB 4422, WB 4792. High yielding varieties with great grazing potential. Omega, OK, Castonguay Farms 405-880-4215. LC# 08013027 6/36

Rye seed for sale from Mason seed, License #08000230, 580-515-9894. 24/3



Western Planters Cotton Gin

580-726-5670

13448 US Hwy 183 • Hobart, OK



Diamond G Irrigation, LLC

- New & Used
- Electrical



- Pivot Service & Parts
- Experience

David Ginter

Owner/Sales

Info@diamondgirrigation.com Office: 806-644-326

1021 S Highway 207, Spearman, Texas 79081

No Limit Land Management and Excavation LLC

- Land Clearing • Forestry Mulching • Grading
- Concrete Removal • Junk Removal • Excavation
- Dirt Work • Skid Steer Work • Brushhog



JJ Quibodeaux
580-303-8479



THE STOCK EXCHANGE BANK

www.stockexchangebank.com

580-256-3314

3 convenient locations in Woodward, OK

Hometown Values and Locally Owned Since 1903!

Knutson IRRIGATION

Anything in Irrigation

Knutson Irrigation Design, LLC

15250 W. Sunshine Road | Yukon, OK 73099

Toll Free: 800-373-9325 | Phone: 405-354-6925

Fax: 405-354-5529 | Cell: 405-830-5296

CERTIFIED SEED WHEAT

AP Roadrunner Butler's Gold
OK Corral (awnless)
Showdown

SCHMEDT FARMS

OK Seed License 08005320
Altus, OK

580-465-0564

314-406-0650

OKLAHOMA FARM BUREAU INSURANCE

CALL ANYTIME!

580-782-3827

Micky Lively, Greer County



FOR INSURANCE CALL MICKY

Great Plains Bank
Greater. Together.



(888) 449-2265 www.gpbankok.com

INSULATED STEEL BUILDINGS



Certified 90 MPH Wind Tested

- DOUBLE WALLED STEEL
- 1 3/4" POLYSTYRENE INSULATION
- 3/4" B-B TREATED PLYWOOD
- SEVERAL OPTIONS AVAILABLE

We make insulated steel portable buildings for various uses such as office buildings, storage buildings, dog houses, play houses, cabins, shops and tiny homes.

PETZOLD PORTABLE BUILDINGS, LLC

580-663-2818 • email: info@petzoldportables.net

Manufactured and on display

1 mile North of Blair, OK on Hwy 283.

www.facebook.com/petzoldportables

Poultry/Birds

Black tri chicks, 3-5 weeks old, \$3 each, guineas 3-5 weeks old, \$5 each, faint goats, \$50, Male and Females, 580-471-8056 4/32

Chickens: laying hens-\$10 and up, & 3 roosters, many breeds, & fresh eggs 580-799-4979 4/35

You can place your ad 5 fast & friendly ways.

1. Walk-In

220 S. Pioneer Rd.
Elk City, OK

2. Call

580-225-SELL (7355)
1-800-675-1416

3. Fax

580-225-7711

4. Mail

P.O. Box 945
Elk City, OK 73648

5. Internet

pennynews@sbcglobal.net

World Renowned ARROWQUIP Cattle Chutes & Equipment

Hobart Farm & Garden
HFG
Hobart, Oklahoma

QUALITY HI-PRO LIVESTOCK FEEDS

Bulk Feed Delivery

Feed Bags

Feed Sacks

HI-PRO



FEEDS



ARROWQUIP

580-726-3351 - 1030 S. Monroe, Hobart Ok

www.hobartfarmandgarden.com

Hours: M-F 8AM-5:30PM • SAT 8AM-NOON



**First National Bank
& Trust of Elk City**
"There is a Difference!"

Today in Ag

MOTION TIRE PROS MOTIONTIRE.NET

Find us at one of our
three locations!

1703 S. Main St.
Elk City, OK 73644

(580) 339-0914

104 S. El Dorado
Sayre, OK 73662
(580) 928-3616

3410 Oklahoma Ave
Woodward, OK 73801
(580) 754-2055

We service all types of vehicles, and
offer 24/7 emergency service.



Garage/Estate Sale

BIG RED BARN SALE-
Open Friday and Sat-
urday: 9:30A to 5:00P &
Sunday: 1:00P to 5:00P. An-
tiques, household, rusty
things, tools, and more.
One big flea market. Face-
book page "Big Red Barn
Sale" Thursday evening
video. Directions: From
hwy 6 & hwy 152, south of
Elk City, go 3 miles south
on hwy 6, 3 miles east on
Rd 1220, 1/4 south. 580-450-
0658. 24/44

**Garage Sale Saturday Aug-
ust 10th - All Day - Sale**
starts at 8am (Inside air
conditioned sun room)
located at 1404 W 6th in
Elk City, Air impact, Vi-
nyl albums, Glassware,
Baseball & Football
Cards from the 70s, 80s
,90s & 2000s, Vintage FFA
Jackets, Men's & Women's
Jeans, Lots of Children's
books, Sports memorabilia,
Household items, Har-
ley Davidson parts, Pic-
ture frames, Hand tools,
Wall art, Painted saw
blade, Diawa Reel, Coke
pitcher, Porcelain dolls,
Lots of miscellaneous.

Farmers
COOP
Sayre, Oklahoma

QLF QUALITY LIQUID FEEDS **ignite**

109 S. 6th St, Sayre, OK
580-928-2664

WWW.EVERETTSWELDING.COM



580-995-4942

US Hwy 34 & 60 • Vici, OK



**National
Bank
& Trust**

We know agriculture!

Elk City, OK • 580-225-2580

Sayre, OK • 580-928-2580

There is a difference.....

www.fnbec.com



"I found it in
Birk
The Penny News"

**WOULD YOU LIKE TO BE A SPONSOR ON
THE "TODAY IN AG" RADIO SHOW?
GIVE US A CALL AT 580-225-9696**

2-D Trailer Sales & Service

Full Line of Trailers & Truck Accessories



**BUY
SELL
TRADE**

FINANCING AVAILABLE!

**HORSE, CATTLE &
UTILITY TRAILERS**

**Butler Spike & Arm Beds • Crown Line Beds • Cargo Craft
B&W Trailer Hitches • GR Trailers • CM Trailers & Beds**



2024 14' Tandem Axle Dovetail With Ramp Gate



**2017-2019 16' Cargo Trailer, W/ 6K Axles, Rear Ramp,
Cargo Door, Starting at \$6,900 - 3 to Choose From**



**New GR 7 x 16 V-Nose Cargo, Tadem 5,200 lb.
Axles, Ramp Door**



32' Cattle Trailer, Triple Axle, Sand or Grey Color



**2021 Can-Am Maverick - 439 Miles, 5.5 Hours,
Like New - Make an Offer!**

TRAILER PARTS, SERVICE & REPAIR

ROOFING PROS

OK LIC#80002994



MCABEE FOX ROOFING LLC

580.682.9600

COMMERCIALY ENDORSED • FULLY INSURED



SOUTHWEST
OVERHEAD GARAGE DOOR

1000 South Merritt Rd., Elk City, OK
580-225-0442
www.swdoorelkcit.com



Visit our showroom today!

Providing Sales, Service & Installation of Residential & Commercial Overhead Doors and Operators.

We also install Solar & Electric Gate Operators.

Serving Western Oklahoma & The Texas Panhandle Since 1980.



Need Fencing Supplies?

WE GOT THEM!



T-Posts • Barbwire • H Braces
Pipeline Posts • Gates



EVERETT'S
WELDING & REPAIR, INC.

580-995-4942 | US Hwy 34 & 60 • Vici, OK
WWW.EVERETTSWELDING.COM


Livestock

1/2 black Angus/1/2 black Limousin bulls, good disposition, guaranteed fertility, 2 years and younger, Tim Kilhoffer, 580-515-9894. 24/34

Black, polled Limousin bulls, good disposition, guaranteed fertility, 2 years and younger, Tim Kilhoffer, 580-515-9894. 24/34

Age Advantage Bulls for sale - Angus, Sim-Angus, and Simmental, 405-574-4915. 24/41

Livestock tire water tank sales and installation, 8ft and 12ft tanks available. Turn key installation, concrete apron, stainless plumbing up through the center. OK & TX, Call Ryan (580) 374-1975 if no answer, leave a message. 16/33




Gelbvieh & Balancer bulls, yearlings and 2yr olds, Ringwood OK, www.indiancreek ranches.com call Gerald 580-541-4787. 8/32

Holder Land & Cattle, LLC, 1st calf Angus pairs and bulls For-Sale, 580-471-2226- Harrison, 580-471-7395- Mark. 4/33

We buy crippled cows, bulls, steers and heifers need to weigh at least 400lbs and be able to get in a gooseneck, and certain bad eyed cows and bulls, 580-339-4362. 8/34

Commercial Black Angus bred heifers, bred to low birth weight registered Angus bulls, preg checked and all shots up to date, Seyler/Roach Angus Cattle, call Sandy 580-614-1150, Greenfield, Ok. 8/36

2E Cattle, Registered Red Angus Bulls for private treaty, GGP & DNA tested, BSE tested, Bryant at 406-200-5267. 4/32



BULLS FOR SALE, Gelbvieh & Balancer (Angus x Gelbvieh), black or red, gentle, tested, pollock-cattle.com, 580-922-5629. 4/32

BIG BLUE LIKE NEW CATTLE CHUTE will trade for big stout young gentle head horse, please call 575-749-5400. 4/33

20 black black/white faced 4 & 5 year old Feb calvers, nice replacements, 580-774-8445. 4/35

35 black and black/white faced fall calving cows, nice replacements 580-774-8445. 4/35

10 black and black/white faced pairs, big claws, 580-774-8445. 4/35

Guns/Knives/Bows

Model 29 44 mag, Remington 870 200th anniversary, FAIR O/U 12 ga., call 806-334-1316. 2/33

Winchester Model 62A, very good condition, \$1000 OBO, 580-682-3016. 2/33

Aimpoint Duty RDS red dot scope, Never used, still in box, \$375 OBO, 580-682-3016. 2/33

Ruger 45 long colt, 7 in barrel; Ruger single 6 32 magnum, 6 in barrel; Ruger 22 pistol automatic 580-548-7780. 1/32

STEEL CONSTRUCTION • CONCRETE • STORM DAMAGE




Stan Fitzjarrell **Josh Fitzjarrell**
580-445-0473 **580-445-0724**
email: sjfjtz@yahoo.com
facebook.com/sjfjtzjarrell

METAL OR WOOD CONSTRUCTION

CATTLE SHADES • SHOPS • BARNs • CARPORTS

WHITE DENTAL CARE

Drs. Mori & Teri White, DDS

Sedation Dentistry Calms Fears...

Take a *pill* and *snooze* through your dental appointment.

For many Americans, going to the dentist is a frightful event. If you are one of the 145 million people who avoid the dentist due to fear, we have the solution... Sedation Dentistry.

You can now experience your dental appointment through a totally relaxed and comfortable environment. With the help of Sedation Dentistry, you will wake up to find that your dental appointment is over and the restorations have been completed painlessly.

For those with a busy schedule, we can accomplish more dentistry in one appointment which means fewer visits to the dentist.

Sedation Dentistry is available for everything from simple restoration to the most complex procedures. We are very sensitive to our patients needs, especially those with high fear and apprehension. Now we can put an end to anxiety with this safe and wonderful technique of sedation.

We are proud to be able to offer Sedation Dentistry and offer hope to those who have been avoiding the dentist due to fear. If you would like to know more, call our team with your questions.

Drs. Mori & Teri White practice cosmetic, implant and family dentistry at 2802 8th Street, Woodward, OK 73801

Telephone 580-256-4301
See our website at www.woodwarddentist.com

sedation



TRADIO

KECO 96.5

Tradio can be heard every Monday through Friday from 10am – 11am on 96.5FM KECO. Callers can call or text 580-225-9697 to buy, sell, or trade during that time. Only calls are published here. These calls are from 7/31 to 7/6

WEDNESDAY

FS: Snoodle puppies 8 weeks old, shots and wormed \$400 580-729-2387

GARAGE SALE: (2) side by side fridges (2) AC units 719 N Clarence Nash Blvd in Watonga 580-402-6250

INVITE: Living Water UPC last night of the revival!

LF: used riding mower 580-214-1004

FS: 1401 E 3rd, watermelons cantaloupe 580-339-6531

FS: 16ft Stratus bass boat with 50 horse motor \$2750 580-661-1148

FS: Tunnel ram small block Chevy couple of intakes and other misc. parts 806-664-3764

FS: Full blood Jack Russel puppies READY TO GO 3f 1m 580-381-0669 Hollis

FS: Antique telephone; antique pencil sharpener; craftsman power washer 706-0821

FS: Ruger M77 all weather rifle Ak47 pistol arm brace 405-545-0305

FS: Racing lawn mower bad trans but new parts with it 580-729-8402

LF: Upper intake for 1997 Ford 150 5.4 Triton 580-3901-0820

FS: 16ft John Deere No till drill 1560 field ready updated \$38k 580-445-7276

FS: 4 toy Australian Shepard male pups wormed and shots 580-210-9575

FS: 8N Ford tractor 4ft brush hog; 1020 woods loader; LF: gentle horse 580-799-1307

FS: Set of tires 265-65-r18 and 265-70-r17 \$500 a set 821-1873

FS: 243 Stevens model with scope cameo \$500 580-799-4634

FS: Baby grand piano, redwood, \$900; Great Pyrenees/Anatolian hound pups 5months and 4 weeks old \$50; large dog house \$155 580-613-0108

FS: Buick Rondevu runs great 580-210-8926

LF: Male Bully to mate with his female 580-309-3070

FS:5x6 large round bales of wheat hay \$80 580-450-8523

THURSDAY

FS: Leopard Gecko no tank; Pyrex dishes red and white; tilt trailer 4x8 580-940-1463

FREE: Older vintage game, don't work but can be fixed; 32 fluores-cent light bulbs 580-821-1581

FRIDAY

FS: 617 DVD's \$3 a piece or \$500 for all 580-374-5107

GIVEAWAY: 32" storm door full glass FS: China cabinet roll top desk \$100 each 580-318-1512

FS: Pygmy goats 2 males; 1 male kitten; trumpet 580-515-0434

FS: 2 pickup bed trailers \$600 580-821-4412

FS: 2 Yoda robots \$100 each; lami-nator \$50, 580-799-3222

FS: Ladies barrel riding saddle circle Y comes with stand and blanket, bridle, brushed, etc. \$2000; Queen bedroom set, box spring , sleep number mattress, nightstand, dresser with mirror, solid oak \$700, 405-820-8316

FS: Ruger 9mm 7 shots 580-574-5279

FS: Woods 3.0 finish mower pto driven \$2000 918-916-6867

FS: Snoodle pups all colors 580-729-2387

FS: Watermelons and cantaloupe 1401 E 3rd

FS: 4 round bale hay trailer, heavy axle heavy hubs \$500; portable loading chute \$250; 3 sets of 18" pickup tires 10 ply \$100 a set 580-309-2801

GIVEAWAY: 3 male pups, big dogs; 580-210-7244

FS: 2012 Victory \$5500; 2007 Kawa-saki 250 4 stroke dirt bike \$2500; 1992 Yamaha 250 2 stroke \$1000 580-309-0305

FS: 425 gallon water tank \$400 580-821-2696

FS: Big square bales of alfalfa 4x4x8 bales 580-706-1432 can deliver

FS: Ruger 9mm pistol; martins combine bow; male and female grasshopper 574-5279

FS: Peaches 11867 N 1750 Rd Erick OK; 30 joints of 5 1/3 drill pipe 580-374-4204

FS: 2 garage doors 8ftw 7ft tall bronze lift 580-821-1283

YARD SALE: all weekend 1 mile east of Walmart left at the curve and red mailbox left of the road

FS: Dewalt generator \$1200 580-318-3511

FS: Wine guard mobile satellite dish direct tv compatible; sand pump and filter; LF: Nerf bars 2011 Chevy crew cab 580-243-9536

FS: Vinyl siding GOOD DEAL; lay-ing hens 580-331-7572

FS: Pack Rat Tool Box 806-670-8555

FS: 01 Jeep Wrangler automatic; 2015 ram 1500 4wd 4 door; Brush hogging and welding in Elk 719-342-3059

MONDAY

FS: 1986 Winnebago camper; bunch of extra unprocessed milk; 720-982-4776

GARAGE SALE: 2 Fridges 2 AC units 719 N Clarence Blvd 580-402-6250

TUESDAY

FS: Rock island armory pistol 9mm barrel TCM 22 barrel new in box \$800; AK 47 pistol muzzle break \$1000; Ruger m77 all weather 270 Caliber 405-545-0305

FS: Seasoned firewood; FREE: cats 580-660-0402

LF: Tractor tires 13.6-28; 580-799-0171

FS: Cinnamon Queen laying hens \$12 each 580-799-5029

FS: 1982 F150 pickup 70k miles runs good camper shell \$2500 580-330-9012

FS/TRADE: 1994 Volvo tandem axle dump truck, 290 Cummins, 10 speed transmission, \$10,500 or trade for a nice Case international combine. 1974 chevy tandem axle grain truck, automatic transmis-sion, gas motor is blown, \$2000 or for \$2600 I'll include a good 427 v8, will trade this truck for a 16ft to 20ft disc plow. 2 L2 gleaner com-bines, on is field ready and other is parts machine, two header and parts, \$7500 or trade for a single axle dump Truck or single axle semi truck. 580-679-4619

LF: Guineas 580-243-7577

LF: Someone that can move a mobile home 16x70 in Dill City to Mangum OK 580-706-9398 580-644-4190

FS: 4 round bale hay trailer heavy axle and heavy hubs \$500; 2 drill grain augers 12 volt \$150 each; 26ft grain auger portable \$300; used 18" tires \$100 a set 580-309-2801

FS: (2) 235-75-15 trailer tires good tread \$15 each 580-799-4634

FS: House for sale 411 E locust in Sayre 3b 1b 6lots 580-799-3238

FS: 2b 1ba house 116 Blackburn 80k 580-821-2710

FS: 1945 John Deere B model trac-tor \$4000 580-471-7911

FS: 6x20 bar top stock trailer \$5500 580-471-8282

FS: Set of factory 17" 265-70-17 8hole chevy pickup tires and wheels \$1000 for set LF: 17" 8 hole rims FS: square bailer 580-821-1873

FS: Puppies Mini Australian Shepherd 1 male 1 female make a deal 580-309-4365

FS: 42" craftsman snow blower; 225 Lincoln welder 2000 watt gener-ator 8ft trailer with winch lots of smaller tools, 1205 Cleveland Ave Highland park, 406-375-7321

Tradio

Question of the Day

WEDNESDAY'S QUESTION:

What is the average number of decisions an adult makes in a day?

WEDNESDAY'S ANSWER:

35000

THURSDAY'S QUESTION:

10% of us have at least one of THESE in our car. What is it?

THURSDAY'S ANSWER:

French Fry

FRIDAY'S QUESTION:

No Question of the day

FRIDAY'S ANSWER:

No Answer

MONDAY'S QUESTION:

13% of us have this physical talent. What is it?

MONDAY'S ANSWER:

Wiggle our ears

TUESDAY'S QUESTION

6% of men surveyed that they've had THIS for breakfast.. What is it?

TUESDAY'S ANSWER:

Beer

ON THE AIR

CALL OR TEXT

580-225-9697





FREE INSPECTIONS & ESTIMATES

580.515.3208

CLINTON, OK 73601

**METAL • FLAT • WOOD
COMPOSITION SHINGLES**

BETTER SERVICE • BETTER QUALITY • BEST VALUE

! REMINDER
**MOW
POWER**



**SAVE
20%**



Scan for rates

**Full Line Automotive
& Equipment Repairs**

w/ factory trained technicians on staff

• Oil Changes & Inspections • Tire Repairs • Engine Replacement
• Transmission Replacement • Wheel Alignment • Heaters & Air Conditioners
We use NAPA Auto Care Center parts backed by a minimum 2 year warranty
CALL 580-303-4744 • 915 N. Van Buren • Elk City OK

Trailers



Barrett 7x24 stock trailer, 14ply tires, can send more pics \$15,500, 1-580-774-7675. 4/34



Pre-owned licensed 2007 Wells Fargo 8'X16' enclosed concession mobile kitchen food trailer, turn-key, ready to start selling. Come check it out, \$20,000, 405-205-9842.



Nationwide Trailers in Oklahoma City Ok. 405-724-3640 Ask for Rick Best Inventory with the best prices! Cargo, Car Hauler, Concession, Container Hauler, Deck-overs, Dump, Equipment, Hybrid, Landscape, Livestock, Mono Rail, Pipe Hauler, Porta Potty/Trash Combos, Race Car, Rolloff, Stock, Trash trailers, Tilt, and Utility Financing is available 335 Mulhol-land (I-40 and Morgan Rd.) Oklahoma City Ok. 73128 1/32

S&H 6x16 enclosed stock trailer *Good Condition* Speak slowly in voicemail if no answer. 580-303-9054 4/35

Tree Services

Holman Tree Service

completely insured tree service - offering tree removal, trimming, pruning and stump removal at a reasonable price, call or text **580-715-0680 or 580-445-9234.**

Keith's Tree Trimming, hedges and bushes. Seasoned/green fire-wood, delivery avail-able, 580-660-0402. 4/33

Recreation

2004 Everest 5th wheel RV, 32', good shape, no leaks, 3 slides, sleeps 4, \$15,000 obo, 580-821-6554. 4/33

For sale: 2010 35-foot Jayco Eagle 5th wheel, used very little, barn kept, 580-774-4403. 2/32

2003 Keystone Cougar bumper-pull 35', 580-727-1819. 4/34

RV lots for rent. Short/long term available, call 405-808-2556. 4/35

Mobile Homes

3Bd/2Ba Homes for sale. 1 in Elk City & 1 in Weatherford. Seller financing available, starting at \$795 month-ly. Call 405-808-2556 4/35

Health/ Fitness

2 Electric wheelchairs inherited, wanting to sell, call/text 405-868-6872 2/32

For Rent/Lease

Nice, neat RV lots for rent, 30 amp & 50 amp avail-able, water, sewer, and trash, green grass areas, S. Merrit Road, 580-821-2392. 4/32



"The Clinton" RENOVAT-ED historic apartments. 1bed/1bath with new cabinets, doors, windows, kitchen, and bathroom, Stainless steel applian-ces, 309 South 6th Street, \$600/month, \$600/deposit, \$25/application fee, 405-250-1847. 4/35

IMMEDIATE OPENINGS AVAILABLE

THE TOWERS APARTMENTS

• **FIRST MONTHS RENT IS FREE**

• Low Income Housing for the elderly and disabled.

• All Utilities Paid

• Rent Based on Income

• Laundry Facility

• Handicapped Accessible

• Friendly Environment

• Section 8/Tax Credit Housing



101 E COMMERCE
ALTUS, OK 73521
580-482-2650

Country Dove Gifts & Tea Room



**DINING ROOM IS
OPEN 11AM-2PM!**

Carryout Available.

Store is open 9 am-5:30 pm - Monday-Saturday

To Go orders welcome - 580-225-7028

610 W. Third - Elk City, OK

FOR RENT

**2 & 3 BEDROOM
UNITS IN
BURNS FLAT**

Central heat/air, carport, fenced yard, washer/dryer hookups.

Units have been upgraded.

No appliances, No utilities paid.

• **Security Deposit \$250**

• **Pet Fee \$250 (2 pets only)**

• **Application Fee \$15**

2 BEDROOM/1 BATH \$425

3 BEDROOM/1BATH \$450

3 BEDROOM/1 BATH \$475

CONTACT US AT

MODAOK@WINDSTREAM.NET

580.562.3111 OR 580.243.7782

FOR AN APPLICATION.

**JB FEED
SERVICE**

• **Bulk Feed**

• **Starter**

• **Finisher**

• **Bulk Whole Corn**

580-682-9300

**13981 North 2220 Road
Hobart, Oklahoma**




**Come see us now so
we can keep this from
happening to you.**

**BRIDGESTONE
Firestone**




**1204 S. Main, Elk City
580-225-TIRE**

MACK FORD WELDING
Custom Built Metal Buildings & Carports



580-383-8676 CLINTON, OK

HELP WANTED



WW Manufacturing is looking for energetic and motivated employees.

Welders Full-Time


Starting rate \$15.00
an hour

\$500.00 hire on bonus
after working 90 days.

401K * Health Insurance
Paid Vacation * Sick Leave

Apply at W-W Mfg. 8832 Hwy 54, Thomas, OK.

Services



The Western Goddess Photography is offering something special: **ON-LOCATION Back-to-school Mini sessions at your child's school in Beckham County, OK on August 24, 2024!** Extra Travel Fees Apply for Out-Of-County Travel. What's Included: \$80 sessions, 30-minute session, On-location at your child's school, 5 edited digital images of your choice, additional edited pictures available at an additional \$5/picture, cute props like chalkboards, books, and more! Please reserve your spot today by contacting us on Facebook by scanning the QR code or texting 580-339-6867 or 580-729-1949. 2/33

Wade Dump Trucking, sand, dirt and gravel delivery, 580-799-2652.

Certified retired teacher, will keep toddler/baby in my home Mon-Fri, for \$200/week, 405-300-3631 near 39th & Portland. 4/32

Coarse sand for sale! This product is too coarse for our customer base and will have some pebbles scattered throughout. This sand has been thoroughly washed so it will have very little if any clay content. It is silica sand that is 40 mesh or larger in size. \$7 per ton, we can help facilitate delivery if you prefer. Please email Cody Dukatnik- cdukatnik@sp-silica.com and/or Jason Errthum- jerrthum@sp-silica.com for any inquiries. Signal Peak Silica, 243453 US HWY 270, Oakwood, OK 73658 4/34

T&R Excavation. & Construction for all your earth-work needs. Level pads, pond building and cleaning, tree removal, fence row clearing, demolition, and junk removal/ cleanup. Free estimates OK & TX, call Ryan (580) 374-1975, if no answer, leave a message.

Hunting


New deer rifle, Ruger, 270 plus scope & case, plus 1 weekend on proven deer timber, northern Oklahoma, \$650, 580-541-1112.

Help Wanted

Looking for Class A truck drivers and combine operators for harvest crew. Meals and lodging is provided. Call 405-833-3183 for more details. 5/34

See Page 13

HELP WANTED



WW Manufacturing is looking for energetic and motivated employees.

Full-Time Positions

* Assembly * Fabricators
* Paint Line

Starting rate \$12.50
an hour

\$500.00 hire on bonus
after working 90 days.

401K * Health Insurance
Paid Vacation * Sick Leave

Apply at W-W Mfg. 8832 Hwy 54, Thomas, OK

The Penny News
is now taking applications
GRAPHIC DESIGNER
WITH OFFICE SKILLS

This position will involve the designing and building of ads, assist in the layout of The Penny News on a weekly basis, handle classified ad sales over the phone and walk-in ad sales. The right person will have a **GREAT ATTITUDE**, treat customers on phone and in house in a professional & courteous manner, must be solid in Photoshop, InDesign. Take your Graphic Design Career to the next level! The Penny News is a family owned, well established business that serves Western Oklahoma & The Texas Panhandle.



ThePennyNews.com
Paragon Communications/Publishing is an Equal Opportunity Employer

APPLY IN PERSON TODAY AT 220 S. PIONEER IN ELK CITY
OR EMAIL RESUME TO GABE@KECOFM.COM

Help Wanted



We are looking to hire an experienced journeyman plumber or a second or third year apprentice & an experienced utility specialist

Benefits Include:

Competitive Pay, Vacation Time, Medical, Dental, and Vision Insurance, End-Of-Year Bonuses, Plus 401K

Call: 580-225-1242
E-mail: klinemechehelkcity@gmail.com

Kline Mechanical
101 Stout Drive
Elk City, Oklahoma

Cory's Field Services

- Computerized Water Witching
- Locating underground water channels

RAY BURTIN
720-517-2444

corysfieldservices.com

HAGEMAN CONSTRUCTION



Concrete

- Driveways • Porches • Patios
- Barn & Shed Floors • Sidewalks

Concrete Pre-Fab

- J and U Feed Bunks • Parking Blocks
- Concrete Seals • Splash Blocks
- Cattle Guard Blocks

Contact Howard
580-821-4244



1604 SOUTH MAIN
SHATTUCK, OK 73858

(580) 938-5444

YOUR PREMIER DESTINATION FOR CAN-AM®
POWERSPORTS VEHICLES



CAN-AM®
DEFENDER
MAX LIMITED

CAN-AM®
MAVERICK
MAX X3 XRS
TURBO RR



SCAN HERE TO CHECK US
OUT ONLINE!



TREESOME Tree Trimmers

FREE ESTIMATES • FULLY INSURED

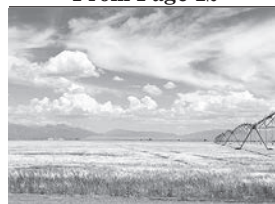
No job too big or too small!
- Family owned and operated -

Give us a
call today!

Joey Porter - 580-497-7273
Mindy Porter - 580-821-7030

Help Wanted

From Page 12



Help Wanted!! Harvest equipment operator & truck driver, no CDL required, travel required to Colorado, transportation provided, housing and 2 meals a day provided, pay depends upon experience, paid weekly, employment starts as soon as possible, no benefits, \$15/hr depending on experience, work for 4 months, call or text, Derrick 1-580-595-0202 or 1-580-704-0245.

Insurance

Mobile/Manufactured Home Insurance quotes and Modular Home Insurance quotes, call 405-878-1400 OR quote online www.OklahomaInsuranceQuotes.net 8/35

Seed



WESTBRED CERTIFIED SEED WHEAT, 2024 Varieties Available, WB 4739 CoAxiom, WB 4445 Clearfield, WB 4422, WB 4792. High yielding varieties with great grazing potential. Omega, OK, Castonguay Farms 405-880-4215. LC# 08013027

CERTIFIED SEED WHEAT

AP Roadrunner Butler's Gold
OK Corral (awnless)
Showdown

SCHMEDT FARMS
OK Seed License 08005320
Altus, OK

580-465-0564
314-406-0650

Rye seed for sale from Mason seed, License #08000230, 580-515-9894. 24/3

Notices

Okeene Group of AA meets every Monday at 6 p.m. at the Okeene Methodist church, can call 405-388-4425 with any questions. 52/33

Oklahoma Parkinson's Alliance holds a monthly support group meeting on the second Thursday of each month, excluding December, at 5:30 p.m. at the Pioneer Center, 1000 Gartrell Place, Weatherford, Oklahoma. Patients, caregivers, family, or friends are welcome. For questions contact Oklahoma Parkinson's Alliance at (405) 810-0695 or info@oklahomapa.org 52/35

Elk City Original Group Alcoholic anonymous Meeting schedule : Mon-Fri at noon, Monday, Wednesday, Friday, Saturday, and Sunday at 7pm, 113 Meadowridge suite K. 52/44

Elk City South side group AA meeting every night, 7pm, at 105 Meadow Ridge Dr. in Elk City. 52/47

Come join our support group, Finding Hope, for loved ones of addicts, 2nd and 4th Mondays each month, 6-7:30 pm at First Baptist Church, 1600 W. Country Club, Elk City, OK, enter the south door on the west side, call or text 405-623-0055 with any questions. 52/14

Come join our support group, Finding Hope, for loved ones of addicts, 2nd and 4th Mondays each month, 6-7:30 pm at First Baptist Church, 1600 W. Country Club, Elk City, OK, enter the south door on the west side, call or text 405-623-0055 with any questions. 52/14

Seed



WESTBRED CERTIFIED SEED WHEAT, 2024 Varieties Available, WB 4739 CoAxiom, WB 4445 Clearfield, WB 4422, WB 4792. High yielding varieties with great grazing potential. Omega, OK, Castonguay Farms 405-880-4215. LC# 08013027 6/36

Rye seed for sale from Mason seed, License #08000230, 580-515-9894. 24/3

CERTIFIED SEED WHEAT

AP Roadrunner Butler's Gold
OK Corral (awnless)
Showdown

SCHMEDT FARMS
OK Seed License 08005320
Altus, OK

580-465-0564
314-406-0650

NM CUSTOM FENCING & WELDING

Barbed Wire • Pipe Fence

Cattle Pens • Setting/Welding Corners

- Family Owned & Operated -

Nick Mackenna 580-210-6101



POLE BARN SPECIALIST

From sheds to warehouses, we are your post frame and metal building construction experts!



Pole Barn Building • Metal Building Construction
Barndominium Construction • Shed Building
Workshop Building • Garage Building

OFFICE: 877-737-7707 • CELL: 479-841-1796

www.johnconstructionpolebarnsar.com

WE'RE PAYING DRIVERS!

We're hiring Class A CDL Drivers for our Hinton & Fay locations.

GOOD PAY - GREAT BENEFITS



TRANSPORTS • ROUSTABOUT • NATURAL GAS CONDITIONING

Elk City Hinton Chickasha
S. Hwy 6 Exit 104, I40 Hwy. 18 & 277

Call 580-225-7100

www.canyonoilfield.com

*"At Canyon Oilfield Services,
the Key Word is Service."*

“In Case You Missed It Last Week”

By Paragon
News Director
Jared Atha



Update: Elk City Teen Charged After July Shooting

August 5, 2024 -An Elk City teen has been charged after a shooting took place in Elk City late last month.

According to court records, 17-year-old Leonel Bryan Ramirez was charged on July 25 as a youthful offender with shooting with the intent to kill after being arrested the day before.

Elk City Police said that the shooting occurred on West 3rd Street near Oklahoma Avenue after an argument between the defendant and the victim escalated and Ramirez allegedly shot the victim before fleeing the scene.

Ramirez was quickly located and arrested.

The victim reportedly was shot in his arm and leg, however his injuries were determined to be non-life threatening.

Ramirez’s next court date is scheduled for August 27.

Officer Involved Shooting Under Investigation

August 8, 2024 - Authorities are still investigating the fatal officer involved shooting that took place Friday evening on the east side of Elk City.

In a press release provided by the Oklahoma State Bureau of Investigation, the incident took place just after 7:00 p.m. that evening, when officers responded to a disturbance call near East Highway 66 and North County Road 2025. When officers arrived on scene, they made contact with 29-year-old Jerry Garcia, who brandished a knife. After officers commanded Garcia to drop his weapon, he ignored their commands and moved toward the officers, resulting in the officer-involved shooting.

OSBI said medical personnel provided life-saving measures, but Garcia was pronounced deceased at the scene. The officers were not injured.

Authorities said this is still an ongoing investigation.

SWOSU Names 2024-25 Sue Goodall Loyall Memorial

August 1, 2024 - Abigail Barton of Cheyenne, Oklahoma, has been named the Sue Goodall Loyall Memorial Scholar at Southwestern Oklahoma State University (SWOSU) for the 2024-2025 academic year.

Barton is a Sophomore at SWOSU majoring in Nursing.

The Sue Goodall Loyall Memorial Scholarship Program was established by Scott Loyall in honor and memory of Sue Goodall Loyall. The program provides scholarship assistance each year to a graduating senior from Butler, Hammon, Cheyenne, Thomas-Fay-Custer, Leedey or Reydon.

The Sue Goodall Loyall Memorial Scholarship Fund is stewarded by the SWOSU Foundation, Inc. The Foundation was established in 1977 to promote philanthropy, award scholarships, and distribute funds to support the activities and programs of SWOSU. For more information about The Sue Goodall Loyall Memorial Scholarship or any SWOSU Foundation funds, please contact 580-774-3267 or visit www.SWOSUFoundation.com.



Want more news?

Scan this QR code with your phone or
visit kecofm.com/news

Motorcycles

2006 HD Dyna Wide
Glide 4776 miles \$8,500;
2009 HD Road Glide CVO
performance tuner, cus-
tom exhaust 3427 miles
\$17,500; Call 580-225-
4880. 4/35

Horses

Looking to buy horses,
ponies, and donkeys, and
goats, can pay cash, call
or text Christy 580-334-
0160. 4/33

Auctions

Check out XIT Auction
calendar in this week's
publication! 4/33

Oil/Minerals

HARBOR ENERGY

Do you have mineral rights
that you would like to
lease or sell? Call us today!
405-217-2715

BUYING Minerals and
Leases FLESHMAN
AGENCY, INC. PHONE:
405-535-7957, EMAIL:
bobfleshman.bf@gmail.
com 16/37



BROTHERS LLC
ON FARM DISC RE-BLADING
405-830-4874
405-830-2324



ROOFING

Metal • Flat • Composition Shingles

For ALL types of roofing call your roofing professional



FREE ESTIMATES 580-339-3111

Fully Insured & Locally Owned

trinitycrd.com • Lic#80004696



Home of the Black Trip Hopper Feeders



2 ton HEAVYBILT Feed Buggy

Self Catch &
Manual
Head Gates



Manual Chutes

Overhead
Bins

Come see
us today!

Call for Special Pricing! 580-726-2120
Cell - 580-331-8022

LAND - MINERALS - HOMES - EQUIPMENT



LAYNE AND AMI LIVERMONT, OWNER/AGENT

Wednesday Aug 21 50 +/- Acres (Offering in 4 Tracts) | Blacktop Frontage | Sm. Grain/Livestock Land | Executive Homesite Potential | Ringwood Area, Major Co., OK

ELEANOR JOAN KEETON

Thursday Aug 22 Attractive, Country Home w/over 2,600 SF of Living Area | 40' X 60' Shop Bldg. | 9.33 +/- Acres with Native Timber | Abundant Wildlife Population Also Selling (Online Onl): 1969 Chevy Wheat Truck | John Deere 2940 Tractor | John Deere 709 Mower | Utility Trailer | John Deere Riding Mower | Dixon Riding Mower | One-Car Carport Ladders | Lawn & Garden Tools & So Much More! Canton/Longdale Area, Dewey Co., OK

DON SEAL

Tuesday Aug 27 645 +/- Acres | Hunter's Paradise | Scenic Livestock/Ranch Land | Good Grass Pasture Timber Lined, Trail Creek | 3 Nice Size Ponds Fishing & Hunting Potential | Putnam/Taloga Area, Dewey Co., OK

AREA FARMERS & RANCHERS

Tuesday Aug 27 2019 Peterbilt 389 | 1995 JD 8200 Tractor & Others Alum. Show/Stock Trailer & Others 5th Wheel Camper Sea Ray Boat | Car Hauler | Cooker Trailer | Trucks, Pickups, & Vehicles | Livestock & Farm Equip. Implements & Attachments | & MUCH MORE!

THE GREENFIELD FAMILY

Thursday Aug 29 137 +/- Acres (Offering 4 Tracts) | Good Sm. Grain/Livestock Land | Prairie Grass | Native Timber | Ponds | Home Site Potential | Glencoe Area, Payne Co., OK

ROBERT C. COLLINS, JR. & THE ALDO & CYNTHIA S. BELTRANO REV. TRUST

Friday Aug 30 200 +/- Acres | Productive Cropland | Good Grass Pasture | 2 Ponds | Farm Buildings Enid/Waukomis Area | Garfield Co., OK

BUSS BROTHERS, LLC

Thursday Sept 5 160 +/- Acres | Productive Farmland | Good Livestock Land | Grass Pasture, Scattered Trees & Ponds | Abundant Wildlife Population in Area Quonset Style Bldg. | Hunter/Kremlin/Breckenridge Area, Garfield Co., OK

WigginsAuctioneers.com
580.233.3066

Livestock

1/2 black Angus/1/2 black Limousin bulls, good disposition, guaranteed fertility, 2 years and younger, Tim Kilhoffer, 580-515-9894. 24/34

Black, polled Limousin bulls, good disposition, guaranteed fertility, 2 years and younger, Tim Kilhoffer, 580-515-9894. 24/34

Age Advantage Bulls for sale - Angus, Sim-Angus, and Simmental, 405-574-4915 24/41

Livestock tire water tank sales and installation, 8ft and 12ft tanks available. Turn key installation, concrete apron, stainless plumbing up through the center. OK & TX, Call Ryan (580) 374-1975 if no answer, leave a message. 16/33



Gelbvieh & Balancer bulls, yearlings and 2yr olds, Ringwood OK, www.indiancreek ranches.com call Gerald 580-541-4787. 8/32

Holder Land & Cattle, LLC, 1st calf Angus pairs and bulls For-Sale, 580-471-2226- Harrison, 580-471-7395- Mark. 4/33

We buy crippled cows, bulls, steers and heifers need to weigh at least 400lbs and be able to get in a gooseneck, and certain bad eyed cows and bulls, 580-339-4362. 8/34

Commercial Black Angus bred heifers, bred to low birth weight registered Angus bulls, preg checked and all shots up to date, Seyler/Roach Angus Cattle, call Sandy 580-614-1150, Greenfield, Ok. 8/36



BULLS FOR SALE, Gelbvieh & Balancer (Angus x Gelbvieh), black or red, gentle, tested, pollock-cattle.com, 580-922-5629. 4/32

BIG BLUE LIKE NEW CATTLE CHUTE will trade for big stout young gentle head horse, please call 575-749-5400. 4/33

20 black black/white faced 4 & 5 year old Feb calvers, nice replacements, 580-774-8445. 4/35

35 black and black/white faced fall calving cows, nice replacements 580-774-8445. 4/35

10 black and black/white faced pairs, big claws, 580-774-8445. 4/35

Real Estate

For rent: hunting/fishing, vacation cabin, Ft. Cobb lake, right next to water, text 580-243-8697. 24/42

LEEDEY:100'w x 190'd Residential Building Lot for new home. City water, sewer, PSO electric, curbed street. Lot #1, Block #1, Northgate addition \$15,900. 405-205-2720 4/33

1.5 ac. to 10 acre lots available in Weatherford area starting at \$9,995 per ac. Seller financing available. Call 405-808-2556. 4/35

FREE RENT. 1,2,3, bedroom homes available now, starting at \$595/month, Call now to lock in the move in special, limited availability in Weatherford and Elk City, 405-808-2556. 4/35

4bd/2ba, approx 2200 sq.ft. in Weatherford area, seller financing is available, call 405-808-2556. 4/35

SCAN FOR DIGITAL COPY



ThePennyNews.com
NEW CLASSIFIEDS ADDED DAILY

Want to Buy

I BUY OLD SIGNS!

Oklahoma collector paying cash. 1 sign or full collection. Also buying gas pumps. Call or text 405-808-8948.

Coin and currency collections, 580-243-8610. 52/4

Want to buy: A lot or land with RV hookups at a lake. Contact Keith at 620-629-7294. 12/39

Poultry/Birds

Black tri chicks, 3-5 weeks old, \$3 each, guineas 3-5 weeks old, \$5 each, faint goats, \$50, Male and Females, 580-471-8056 4/32

Chickens: laying hens-\$10 and up, & 3 roosters, many breeds, & fresh eggs 580-799-4979 4/35



TRAILERS AVAILABLE :

- Diamond T
- Neckover
- Bale Mover
- Diamond W Corral

We Offer
New/Used Trailers
Rentals • Repairs

★ ★ ★ ★ ★

XITAUCTIONS.COM

★ ★ ★ ★ ★

AUG. 29, 2024 1PM • CORDELL, OK • REAL ESTATE COURT ACTION AUCTION
SEPT. 7, 2024 10AM • VINSON, OK • BOB DOWNS EQUIP. AUCTION
SEPT. 14, 2024 10AM • ELK CITY, OK • BOB DOWNS GUN AUCTION
SEPT. 21, 2024 10AM • ARAPAHO, OK • DRIVER REAL ESTATE AUCTION
OCT. 26, 2024 1PM • 610 STADIUM, HOBART, OK- REAL ESTATE AUCTION
JAN. 14, 2025 1PM • KIOWA COUNTY REAL ESTATE AUCTION

AUBREY LATHAM - AUCTIONEER • 580-393-4440, SENTINEL, OK
DANIEL ROGERS-580-471-3824 AUCTIONEER • SHANE FULLERTON-580-641-2004 SOUTHERN OKLA SALES
LICENSED OK RE #150319 TX #10620 • STREET FARM & RANCH, BROKER • 806-292-9944, BRADLEY, OK - LIC#201036

★ ★ ★ ★ ★

Real Estate Auction

★ ★ ★ ★ ★

PASTURELAND CLOSE TO MERRITT, ELK CITY & CARTER, GOOD OPPORTUNITY

SATURDAY, AUGUST 17, 2024 • 10:00 A.M.

SALE LOCATION: Beckham County Activity Barn, Sayre, Oklahoma (Located East of the Historic Beckham County Court House)

AUCTIONEER'S STATEMENT: It is a privilege to conduct this special auction of this pastureland that would be a good addition to a ranching operation. Additionally, it would be a nice site for a homesite for country living. We invite you to attend this special auction.

PROPERTY LOCATION: From intersection of Highway 152 and Highway 34, Go South 1 mile on Highway 34, Then go East 2.50 miles on County Road 1200 to property located on the North side of the road or from the intersection of County Road 1970 (Merritt Road) go 1 mile South on County Road 1970, Then 0.50 of a mile East on County Road 1200 to property located on the North side of the road. Watch for Auction Signs!

LEGAL DESCRIPTION: SE4 of Section 6, Township 9 North, Range 21 W.I.M., Beckham County, Oklahoma. 160 Acres M.O.L. (Surface Only)

PROPERTY DESCRIPTION: The property that is close to Elk City, Merritt, & Carter is in native pastureland. It would be a good addition to a ranching operation or a good place for a Homesite! The property has numerous opportunities. We invite you to attend this auction.

REAL ESTATE TERMS: 15% of the purchase price will be placed in escrow day of sale. Possession will be at closing. All measurements are approximate. (Surface only)

BROKER PARTICIPATION INVITED:
Brokers must pre-register client
48 hours in advance of auction.

FOR MORE INFORMATION
CALL 580-225-6743 OR GO TO
GENECOBBAUCTION.COM

160
ACRES
M.O.L.

SELLER: SCHERRER 1998 FAMILY TRUST & HOLLAND FAMILY TRUST

Gene Cobb Auction & Realty
 Richard E. Cobb, CAI, AARE • Auctioneer/Real Estate Broker • Certified Appraiser
 580-225-6743 • P.O. Box 982 • Elk City, Oklahoma 73648
 Rhett D. Cobb • Licensed Auctioneer • Real Estate Broker - Texas & Oklahoma
 806-206-1554 • P.O. Box 763 • Canyon, Texas 79015 • Texas Broker # 0549348 • TDLR # 16204 • Oklahoma Broker # 142951
 We Act As Agents & Agents Only • Not Responsible For Accidents • Any Announcements Made Sale Day Supersede All Other Announcements. Every effort has been made to assure the accuracy of the information with no guarantee of authenticity.
 VISIT US ON THE WORLD WIDE WEB FOR A SCHEDULE OF UPCOMING AUCTIONS
 AND TO VIEW MORE PICTURES OF THIS SALE: <http://www.genecobbauuction.com>

BOSCH • STANADYNE
• DELPHI • DENSO • AMBAC

*Campbell's
Diesel Service*

Authorized Diesel Injection Service

EXCHANGE & REPAIR
DIESEL PUMPS & INJECTORS

Travis Hoover, Owner

580-347-2466

144 N. 3rd • Mountain View, OK

Taking Consignments NOW for the 2024 Fall Farm & Ranch Equipment Auction

Located at Brink Auction Yard
1 mile South of Frederick, OK on Hwy. 183

Tentative Date: October 5, 2024

Online Bidding Available at
equipmentfacts.com

Loading/Hauling Available • Call to Consign Items
Your Business is Greatly Appreciated



TERRY H. BRINK, Auctioneer
Frederick, OK 73542
580/335-4126
Lic. #OKS-118-006033
JOHN D. BUTCHER
580/471-7937

PUBLIC AUCTION

FRIDAY AUGUST 30, 2024, 10:00 A.M.

AUCTION LOCATION: Canton Community Center, 301 N Garfield, Canton, OK,
two blocks north of the Phillips 66 Quick Stop, (ONE STOP)

TRACT 1 - 40 ACRES +/- GRASSLAND NORTH OF CANTON LAKE
SURFACE RIGHTS ONLY - W/2, E/2, SE/4 Sec 12-T20N-R14WIM, Major County, OK.
Located 3.25 miles West of Cedar Springs Church on Hwy 60, or 4 Miles North of
Canton Lake.

TRACT 2 - 2.56 ACRES +/- MOBILE HOME EAST OF CANTON, OK
SURFACE RIGHTS ONLY - N/2, SE/4 NE/4 Sec 14-T18N-R13WIM, Blaine County, OK.
Located from Canton, OK 3 miles East on Hwy 51, 1.25 miles South on Black Top
2500 Road.

Evans
AUCTIONS LLC.
TOM EVANS JR.

VIEW FULL DETAILS AT
WWW.EVANSLANDAUCTIONS.COM

SELLER:
RHONDA LANNING

580.886.4040 | EVANSLANDAUCTIONS.COM

Hay/Feed



Midland 99 Bermu-
dagrass small square
bales horse quality
hay. Weed-free, stick-
er-free, heavily fertil-
ized. Put up right with
no rain and stored in
the barn on pallets. We
bundle our small bales
in 21 bale bundles, \$300
cash each, puts them at
\$14.28 per bale, bales
average 53 lbs 405-630-
8710. 52/45

Alfalfa Hay, small
square bales, 70-75 lbs,
horse quality, lots of
leaves, \$16/check, \$15/
cash, 405-406-5119 12/34

Alfalfa hay, 5x5 round
bales, 580-821-6617.
12/35

King Farms round bales:
bemuda, rye, crabgrass,
straw, 4055450690 8/33

Wheat hay fertizd and
baled up right. 5x6 net
wrap. \$75 per bale. 500+
available. 4/32

Large round bales for
sale, 580-515-7750 8/36

Two Bar W Farms- For
Sale: Ignite Equine Com-
plete Tubs, Dove Perfor-
mance Nutrition bagged
feed, 21 bale bundles-
Teff, Bermuda, Alfalfa
and straw. Round bales-
various types, Call for
info. Kelly 580-819-0664,
Jack 580-819-0343 24/50

Bluestem hay round
bales(\$75 a bale deliv-
ered) and little square
bales bundled. (\$8 a bale
if you buy a truck load
delivered) or \$10 a bale
if you buy small quanti-
ties, Lyle - 580-273-5476,
Neal- 405-227-6679 52/27

Round bales of hay, 3rd
cutting of alfalfa from
2023, \$95/bale, 3rd hay
from 2023 \$65/bale, oat
and alfalfa mixed from
2024 1st cut \$85/bale,
grass hay from 2024 \$55/
bale, wheat straw from
2024, round bales, \$30/
bale, northwest of Okla-
homa City, 405-420-7841.

Fertilized wheat hay for
sale. 5x6 with net wrap
baled up right, baled in
late April, \$75 per bale,
500+ available. Discount
if you buy 100 or more,
call or text 580-471-1468.

400 bales of fertilized
Bluestem, \$80/Bale, Earl
Warner in Willow at 580-
471-4832 4/34



160+ 2023 5x6 Net
Wrapped Native Grass
Mix Round Bales: Very
clean and tight wrapped
bales asking \$55/Bale.
Located 6.5miles NE of
Butler,OK, can load on-
site Call or Text (580)216-
9033 4/34

Large round bales rye
straw hay for sale, 580-
515-9894. 24/3

Miscellaneous

Top Dollar Paid for un-
wanted vehicles, No
title? no problem, free
towing, Altus, Lawton
and surrounding areas,
Call Doug, 580- 483- 5985.
24/35

SCAN FOR DIGITAL COPY



ThePennyNews.com
NEW CLASSIFIEDS ADDED DAILY

MCABEE'S SEWING
MACHINE VACUUM
CLEANER SERVICE
CENTER, since 1949,
sales, service, most
makes, scissors sharp-
ened, downtown Elk City,
580-225-6265. 4/32

Gift Shop closed in Er-
ick, OK. Remaining dis-
plays and inventory FOR
SALE! 405-850-0495 4/33

Mattress Warehouse,
4719 W 3rd Elk City,
quality mattresses at low
prices, as always I pay
your tax, for more info
call Robin-580-799-0885.
4/34

Household

Maytag Front load Wash-
er and Dryer set. Excel-
lent shape, minimal use,
\$800. Lana 405-222-8628
Danny 580-497-6481. 1/32



53RD ANNUAL HARVEST EQUIPMENT AUCTION

5 Big Days

Tuesday Sept. 24th - Saturday Sept. 28th
Plainview, TX

Five Star Auctioneers

P.O.Box 1030 Plainview, Texas 79073-1030

Jim Sumners (806) 292-2149 Jimmy Reeves (806) 774-2684

Donna Todd (806) 292-1990 License #10006

Log on for a complete list!
@ 5 Star Auctioneers.com

AUCTIONS

Online Only Estate Auction

Early Preview: August 14th 8 a.m. - Noon
Ends: Begins to close Wed., Aug. 14th at 6 p.m.

Loadout: Thurs., Aug. 15th a.m. - Noon

Auction Location: 2696 N. 197 Road Laverne, OK

Selling Tractor & Implements, & More! See our website for a
complete catalog & photos!

Seller: The Coleen M. Winn Trust

Online Only Mineral Right Auction

Ends: Will begin to conclude Friday, Aug. 16th at 1 p.m. CST

Selling 156+ Acres of Dewey County Mineral Rights offered in 2 Tracts!

Seller: The Estate of Linda Riley Tucker

Land Auction

Wednesday, August 21st 10 a.m.

Open House Wed., August 14th 4-6 p.m.

215694 E. County Road 27, Mooreland

13 miles north of Mooreland on Hwy 50 and one mile east on CR 27

3 bedroom, 2 bath 2014 Solitaire Model Home on 160 acres! There
is a metal shop building with concrete floor and two other storage
buildings. The land is a rolling typer terrain with canyons. Fenced on 3
sides, excellent deer & turkey habitat.

Seller: The Estate of Mary Hubert; Thora Fox Personal Rep.

Online Only Auction

Early Preview: Wed., August 14th 4-6 p.m.

Ends: Wed., August 21st 12 p.m. CST

Pickup: ONE DAY ONLY! Wed. August 21st 2-5 p.m.

215694 E. County Road 27, Mooreland

Selling JD 3038 Tractor, Several 3 pt. Implements, Vehicles, Shop Tools,
Household Items, Furniture & More! See our website for a complete
catalog & photos!

Seller: The Estate of Mary Hubert; Thora Fox Personal Rep.

Online Only Mineral Right Auction

Ends: Begins to close Fri., Aug. 23rd at 1 p.m. CST

Selling 299.69+ Net Acres of Woodward County, OK Mineral Rights in 5
Tracts!

Sellers: Jones Trust

Fall Consignment Auction

Saturday, Sept 14th 10 a.m.

Smith & Co. Auction Facility, Hwy 412 Mooreland, OK

We are accepting quality consignment items! For best advertisement
have your list of items in by August 9th. Call 580-254-3975 or email
admin smithcoauctions.com to get your items listed.

www.smithcoauctions.com



Public Auction

Wednesday, August 28 2024 at 10 am

Double wide mobile home on 5 acres
Kubota tractor, Honda 4-wheeler plus
other equipment and household items

Address: 24211 Highway 8, Watonga, OK 73772

Seller ~ Kerr Living Trust, Larry B. Kerr ~ Trustee

more info: visit www.ridenhoureauctions.com

Ridenhour Auctions
Chris Ridenhour

Auctioneer/Sales Associate

ph. 405-313-7166

Darrell Smith Realty/Broker

Open House

Sun. Aug 11 from 1 to 3

Surface only

sale is on-site only

- ONLINE ONLY - ONLINE ONLY - ONLINE ONLY - ONLINE ONLY -

Estate Auction

STARTS ENDING: MONDAY, AUG 12, 2024 @ 5:01 PM (SOFT CLOSE)

Address: LOCATION #2 - 13 W. Main St. • Chouteau, Oklahoma 74337

800+ LOTS

FREDERICK REMINGTON STATUES, JUKE BOX, METAL SIGNS, INDIAN ART & COLLECTIBLES, PEDAL CARS,
DAMASCUS KNIVES, FURNITURE, PATIO FURNITURE, WASHER & DRYER, OIL & GAS MEMORABILIA,
SEWING MACHINE, MUSIC EQUIPMENT, COSTUME JEWELRY, LOTS OF ANTIQUES & COLLECTIBLES

IN-PERSON PREVIEW & PLACE BIDS:

Monday, August 12th from 9am - 1pm

PICK-UP & LOAD OUT:

Tuesday, August 13th from 9am - 6pm

www.chuppsauction.com

NOT RESPONSIBLE FOR ACCIDENTS. ANY ANNOUNCEMENTS DAY OF SALE SUPERSEDES PREVIOUS ADVERTISING.

CHUPPS AUCTION & REAL ESTATE

Stan Chupp
(918) 638-1157

Dale Chupp, Realtor
Coldwell Banker Select
(918) 630-0495

Jonathan Miller
(918) 237-7582



ELK CITY FARMERS & RANCHERS FALL AUCTION

August 17, 2024 @ 10 AM

3224 HWY 6

Elk City, OK 73644

Elite Auction Co.

Derek Wooton - (580) 660-6179

Justin Armitage - (405) 808-1479

TRACTORS:

18' 8370R IVT, ILS, 2600 hrs ft and rear duals, nice.

23' JD 6R195, 313.8 hrs, IVT, TLS, loader ready, AT ready, like new.

19' JD 6155R 24 sp, TLS, ldr ready, 420 hrs, AT ready, factory warranty.

13' JD 8310R, 4981 hrs, IVT, ILS, 85CC pump, Front and rear duals.

11' Case IH 315, 5765 hrs, guidance, front/rear duals.

09' Case IH 305, 5023 hrs, PS trans, ILS, guidance, ft& rear duals .

13' JD 6150R, 3195 hrs, C&A 20 speed powerquad.

13' JD 7215R, 4665 hrs, 20sp PQ trans, JD H480 SL ldr.

14' JD 7230R, MFWD, IVT, 5723 hrs, duals .

20' Case IH Maxxum 135 MFWD, 3868 hrs, 16X16 trans, 3 hyd.

NH T6.175, 3321 hrs, 16X16 transmission, 4 hyd, ldr ready.

88' Versatile 846, 9355 hrs, bareback, 20.8R38 tires.

11' NH TD5050, 1617 hrs, shuttle shift, MFWD, ldr.

Case IH 1896, 4379 hrs, ps trans.

14' Kubota B2650, 533 hrs, hydrostat, ldr, backhoe.

Case IH 7250, showing 8665 hrs, ps trans, 1000 pto, 3 hyd.

JD 5403, 1211 hrs, 2wd, JD ldr.

JD 7810, 8514 hrs, ps trans, 3 hyd.

JD 4430, 8750 hrs, ps trans, JD 740 ldr.

97' Case IH 8940, 5,959 hrs, MFWD, ps trans, 3hyd remotes, 1000 pto.

85' JD 4450, 2wd, quad range, rear 3pt, 3hyd remotes, 540/1000 pto.

JD 4020, 9472 hrs, synchro, diesel, 2 hyd.

Challenger MT325B, 614 original hrs, MFWD, canopy, LH reverser.

JD 6330 C&A 2867 hrs, 2wd, 16 speed, LH reverser.

JD 7810, 10k hrs, MFWD.

NH TJ375, 5244 hrs, 12 speed, bareback, 520/85R42.

Case IH 9270, 8932 hrs, 12 speed bareback, 24.5-32.

Case IH 9370, 4997 original hrs, ps trans, motor at 4k hrs, good tires, AT ready, very clean.

13' NH T6.175, 3523 HRS, 16X16 transmission, ldr ready

JD 4650 ps trans 2wd 18.4R42

M4.071 Kubota C&A MFWD ldr 90 hrs.

Case IH JX 65 2wd, loader canopy 460hrs.

JD 6400 C&A MFWD loader.

NH 6070 bidirectional loader 3pt and pto both ends 6350hrs.

JD 4960, MFWD, powershift.

JD 4020, console, synchro, diesel, canopy, 2hyd, 443 hrs showing.

Buhler Versatile 2210, 3033 hrs showing, MFWD, full outback guidance, 480/80R46 singles.

Case IH Farmall 45, 775 hrs, hydrostat, MFWD, loader, no cab.

NH 8970, 7400 hrs, MFWD, duals.

WINDROWER/BALERS:

13' WR 9770 MF Windrower guidance, 2341hrs, 16ft disk, steel crimpers.

NH HW340, 3304 hrs, HS18 header.

JD 1600, 1000 pto, rubber conditioners.

19' JD L341, large square baler tandem axle 26k bales.

Hesston 4910, 1000 pto, no monitor.

23' JD 460R round baler, 200

Original bales, precutter, net/twine, 1000 pto, like new.

JD 560M round baler, 5130 bales, net/twine, 1000 pto, wide pickup, has monitor and drive shaft, very nice.

JD 560M round baler, 11,612 bales, 1000 pto, mega wide, net/twine, field ready.

JD 460M ROUND BALER, 4x6, net/twine, drive shaft, no monitor.

JD 568 round baler, net/twine, 1000 pto, 19731 bales.

Vermeer 605M round baler, 7808 bales, 1000 pto, net, nice, one owner.

00' JD 566 round baler, 6613 bales, 1000 pto.

BALES/COMBINES CONTINUED:

JD 535 round baler.

JD 348 Baler, twine tie, 540 pto, hyd tongue.

Kubota BV4160 round baler,

net/twine, 540 pto, bale kicker.

NH BR7070 round baler, 7,241 bales,

net/twine, extra sweep pickup, 540 pto.

MF 2846 baler, net/twine, 1000 pto, has monitor and shaft.

NH 660, twine only, 1000 pto, has monitor and shaft.

NH BR7090, 8987 bales, net/twine,

1000 pto, has monitor and driveline.

Hesston 4600 baler, inline, wire tie,

540 pto.

COMBINE/HEADERS:

08' JD 9870 CM, chopper, 20.8/42 tires, 3200/2100 hrs.

04' JD 9860 STS, 2804/2055 hrs, chopper, folding bin extensions, 4x4.

Cat 1230, 12 row, 30", lexion adapter.

JD 930, 30', bat reel, ran this year.

Gleaner 830, 8 row, 30" 5008.

Case IH 1020, 30', pickup reel

GRAIN CARTS/ GRAVITY BOXES:

Brent 1196, 1000 pto, tarp, hyd spout, 520/85R42 duals, very clean.

Oteco A100, good condition, GVW 28000, very little use.

Parker 3620 seed tender, Honda motor, triple axel, very nice.

J & M 525-SD, conveyor, split bin.

E-Z Trail 500 grain cart, 18.4-26 tires, good condition.

Parker Gravity Wagon, hyd auger, extensions.

Friesen 110 seed tender, Honda motor w/ trailer.

Parker 2600, 400-bushel capacity, JD 1075 running gear.

Bradford 225, Honda motor, tarp, hyd auger.

Killbro's 350, hyd auger, tarp.

Big 12 12K, 1000 pto, airplane tires.

Parker Gravity Wagon, hyd auger, extensions.

Killbro's 350, 350-bushel w/ hydraulic auger.

Big 12 400, 540 pto, folding auger.

Parker 2600, 400-bushel capacity, JD 1075 running gear.

Demco GF-250, 781.

Killbro's 350, JD chassis, extensions.

TILLAGE:

Sunflower 1435-33, 33' disk, rock flex, good condition.

Sunflower 1435-23.9 disk, rock flex,

always shedded super quality

Sunflower 1433-29, 29', 23" rear discs, new ft discs, rock flex, harrows.

Sunflower 1232-32, 32', rock flex, disc measures 22", nice clean disc.

Great Plains 4333, 33', rock flex, disc measure 21.5"-22".

JD 235, single fold, front discs measure 22", rear discs measure 20.5", approx. 20'.

Landoll 9650-46, 46' field cultivator, with harrow.

JD 2210, 65' field cultivator, floating tongue, harrows.

12' JD 2210, 55' field cultivator, floating tongue, harrows, new sweeps.

Javorsky 2700, 27', rear hitch, harrows, very little use.

JD 2210, 36' field cultivator, harrows, good sweeps, shanks are tight, very clean.

JD 980, 36' field cultivator, harrows, spring shank.

Baker Field Cultivator, sweep with harrows, good condition.

JD 980, 36', good sweeps, good harrows, no welds.

JD 980, 36' field cultivator, new sweeps, good harrows.

Brillion Packer, 30' pull type folding cultimulcher.

Jd 2410 36 ft chisel floating hitch summers harrow, single point, nice.

Sunflower 2433-41, 41' chisel , rigid shank, rear hitch.

NH ST540, 29', spring shank chisel, no welds.

Krause 4336 Chisel, 34', spring shank.

Flexicoil 340 chisel, 34', spring shank, harrows.

Graham Chisel, 12 shank, single bar drags.

JD Ripper, 13 shank ripper, but only has 7 shanks, good condition.

Aerway AW1200-2B48-D, pull type, concrete blocks, no welds. 10'.

22' model Armstrong RV 10, Pull type aerator, blocks.

LOADERS:

2-JD 148 row crop mounts, pins are tight, very good condition.

JD 280 loader, joystick, bucket, brackets for Deere.

Koyker 500 Loader ,JD 4020

Brackets.

TRUCKS/PICKUPS:

00' Peterbilt 379 Cat C15, 95k miles on inframe & front end, new ac.

85' International S1900, 184,390 miles, diesel,

76' Chevrolet C65, gas, 11R22.5,

tailgate auger, very clean for age.

97' GMC C7500, cat diesel, 6 manual speed, 322,166 miles, 16' bed with twin column hoist, shur-lock roll over tarp.

20' Dodge 1500, 43,712 miles, 2 wd, bed liner, quad cab, local pickup, very nice.

07' Ford F250, 160,351 miles, diesel, auto, hay bed, sells with cake box.

05' Dodge 2500 Cummins, 4X4,

quad cab, 198,965 miles, auto.

2015 Chevy 2500 HD, 205,035 miles, 4x4 automatic.

TRAILERS:

15' Eby Ruffneck, factory

extended nose, 10k axles,

aluminum stock trailer.

08' Great Dane Flatbed, 48', 102", air ride, good condition, has title.

Wylie Nurse Trailer, 150-gallon, Honda motor with pump, lights, fender.

JHD Header Trailer 40R, like new, brakes on one axle.

24' Thiessen TMFW24, new 89.

Hay Trailers, (2) 3 bale hay

trailers, very good condition.

Unverferth Header Trailer 25, very clean.

Trail Master GN Flatbed, 28' long, 102" wide, single tire tandem axle, rolling tailboard, no title.

24' Thiessen TMFW24, new 91.

Combine Trailer, A frame, tandem axle, 10.00R20 tires, air ride.

Robbco 424, 145.

05' Gooseneck Flatbed, tandem axle, single wheel, 20' deck with 5' dovetail and ramps, 102" wide,

7000 lb. axles,

08' Utility Flatbed Trailer, 53'x102", spread axle, air ride,

aluminum wheels, very nice, clean title.

11' CM Aluminum Livestock Trailer, 26', 6'8" wide, 6.5' tall, good tires, very clean.

79' WW Livestock trailer, 16', half top.

73' Hyster Dozer Trailer, 8/25R15 tires, dovetail with ramps.

24' X-Star Fuel Trailer, 750-gallon, 12-volt pump, toolbox, new.

Gehl 970, hyd drive, good chain.

Balzer Silage Trailer, pto drive.

GN Hay Trailer, 6 bale, single or multiple bale dump.

Ledwell feed trailer 40ft

Hay Trailer, 5 bale, bumper pull,

18' GR livestock trailer, 24'

rubber floor, butterfly gate, silver in color.

Schaben 1000 nurse trailer,

1000-gallon, gas motor/pump.

Wylie Nurse Trailer, 1250-gallon,

Honda motor with pump.

2010 KC Fuzion Toy Hauler, 41', 3 slides, 2 TV's, lot of storage, full kitchen, microwave. Etc.

Imperial GN dump trailer, 12k axles, 16" tires.

CONSTRUCTION:

JD 333G skid steer, 4675 hrs, C&A, joystick controls, bucket.

19 JD 324G skid steer, rops, 2 sp, 1598 hrs.

21 JD 330G skid steer, rops, 4875 hrs.

2015 Bobcat E50, mini excavator, 1006 hrs, rops.

19' Case TR270 skid steer, 1143 hrs, joystick control, C&A.

12' CAT 289C2, 1249 hrs, hi-flow, cab with ac and heat, joystick controls, nice.

CONSTRUCTION CONTINUED:

Takeuchi TL150 CTL skid steer, 2241 hrs, cab, joystick controls, bucket.

84' constructor belly dump, 11R22.5 tires, no title.

Rhino 1310, 1000 PTO, pull type.

Cement Mixer.

SPRAYERS:

12' JD 4730, 2549 hrs, 100'

booms, 1000-gallon stainless tank, hydraulic tread adjust, autotrac

SF2, section control, very nice.

Rogator 1254, 6672 hrs, 1200-gallon, ag leader guidance, has been used this yr.

Spra Coupe 4455, 2143 hrs, full guidance, tow hitch, very little use.

Rogator RG110, new leader

L4258G spreading bed, dual spinners, 5255 hrs, guidance,

sweeps, 5 bar harrow, nice.

Spra-Coupe 3630, 3242 hrs, 5

speed manual, 4-cylinder diesel.

Shaben 750 sprayer, raven

monitor, 750-gallon, 70' booms, adjustable row crop tires.

Enduraplas Sprayer, 60-gallon,

Honda Motor.

Wylie 1000, 1000 gallon, 60'

booms, induction tank, controller.

Ag-Chem 502, 500 gallon, 40'

boom, controller.

Wylie 1000, 1000-gallon, 60'

booms, controller.

Flexicoil 67XLT, 500-gallon, wind guards.

Hardi Commander 1500, 1200

gallon, 80' booms, controller

Hardi TR500G, 500-gallon, 40'

boom, pto pump, controller, good condition.

GRAIN DRILLS:

20' Landoll 5531-40, 40', 7.5"

spacing, new discs, very good condition.

20' Landoll 5531-30, 3868 acres, 7.5" spacing, grass seed boxes, 30', monitor, like new.

JD 455, 35', 7.5" spacing, markers,

13" disc, very clean 2in press

wheels

JD 455, 35', 7.5" spacing, 13in disks 2in press wheels.

Great Plains 3S3000HD, 30', 7.5" spacing

SOLVE SEPTIC PROBLEMS

- Pumping • Repairs
- Aerobic System Maintenance

“Pay a little for service now or pay a lot to replace it later.”

Rice Septic Service

www.riceseptic.com (580) 928-2442



Cats/Dogs/Pets



ASDR registered Toy Australian Shepherd pups, ready 8/2/24, red tri males with some blue eyes, raised in home, 580-210-9575. 8/32

10wk old registered Maltese pups UTD on shots & dewormer, vet checked. 1 male 2 females, call or text 580-254-1102 for pictures & more info. 3/32

Jens Furfert Yorkies, males ready Aug 18th, shots, wormed tails dewclaws removed, vet checked, \$800, (580)660-1019. 3/32

ACA registered French Bulldogs, vet-checked and utd-on-shots, 17-weeks-old, home-raised, NOT A MILL, 1 male & 2 females \$1,000, 405-868-6872. 6/34

Mini Aussies- blue, merles, black tris, \$150-\$200, 580-729-2387, leave a message. 2/32



FREE PUPPIES: Bull-dog-Boxer mix, they are very quiet and love water, (very playful), 580-497-6810. 4/34

AKC Pembroke Welsh Corgi puppies for sale. We have 2 black male tri's - 2 female sables - 1 female bluie. Beautiful puppies that are triple clear by parentage and all carry the blue gene. For more information call 580-334-0030. 4/34

AKC Great Danes. 2F, 3M, Black, up to date on shots, \$500, 405-448-1528. 3/34

(6) Livestock Raised 1/4 Great Pyrenees 3/4 Anatolian Shepard puppies, both set of shots and wormed. Ready to go! Call/Text 469-585-7151 2/33

Havanese puppies, chocolate, sable, and white, 2m, call 580-243-8416. 4/35



Free Kittens, 8 weeks old, beautiful colors, litter box trained, can be inside or outside 2/33

Privately owned dog kennel was USDA and OK registered, Retired breeding dogs free, needing good homes, kennel raised, most are 6 years or older. If interested please call 580-682-9036. 3/34



AKC Boston Terriers, 9-week-old, high quality, UTD/RTG, genetics guaranteed, solid food, crate trained, in-home raised, dewclaws removed, 2 males & 4 females, beautiful, smart, and social, potty-trained started, 580-571-2128 4/35

For Rent/Lease

Nice, neat RV lots for rent, 30 amp & 50 amp available, water, sewer, and trash, green grass areas, S. Merrit Road, 580-821-2392.



“The Clinton” RENOVATED historic apartments. 1bed/1bath with new cabinets, doors, windows, kitchen, and bathroom, Stainless steel appliances, 309 South 6th Street, \$600/month, \$600/deposit, \$25/application fee, 405-250-1847. 4/35

Health/ Fitness

2 Electric wheelchairs inherited, wanting to sell, call/text 405-868-6872. 2/32



ELK CITY STORAGE 580-799-0197
104 Shannon Drive, Elk City, OK

ROUTE 66 HOMESTEAD

Nurturing the Mother Road

ROUTE 66

Est. 2020

• VEGETABLE PLANTS • HERBS • FLOWERS

Plants grown from heirloom seeds (Most varieties available)

TEXT ONLY - 806-340-8220

FOR MORE INFORMATION

ELITE FIREARMS ONLINE AUCTION

Private Collection of High-End Guns: Desert Eagle Pistols, Colt WWI Pistols, Custom Rifles, Shotguns, Ammo, Scopes, and More!

BID NOW THRU AUG. 13

United Country Real Estate

Heard Auction & Real Estate

3200 W. Modelle, Clinton, OK 580-323-6120

HeardAuction.HiBid.com

Sale Conducted by S & S Estate Sales • 580-821-1397

ESTATE SALE

AUGUST 10, 2024 SAT 9AM - 5PM

PLEASE NO EARLY BIRDS

517 S. 12th St. • Clinton, OK 73601

LOOK FOR OUR SALES IN THE PENNY NEWS!

PERSONAL PROPERTY

- Prairie Wedding Book - Excellent Condition
- Table w/ 6 Chairs
- Corner Shelves
- Curio Shelf
- Bookshelves
- Shelving, Metal & Wooden
- Cinder Blocks
- Small Air Compressor
- Wood Trim & Dowel Rods
- Sheets of Cabinet Backing
- Totes
- Eufy Robot Carpet Sweeper - New in Box
- Card Tables
- Single Adjustable Hospital Bed
- Healthy Meter Scale
- Quilting Material
- T.B. 12 Janome Sewing Machine
- Cross Stitch & Crocheting Thread Hooks & Hoops
- Crafting Items
- Steamer Trunk
- Upright Piano

- PANDA International Coke Beanie Babies
- Oil Lamps
- Old Bottles
- Old Pop Bottle
- Droid Star Wars Watch
- Scentsy Burners w/ Wax
- Hot Wheels in Package
- Wooden Cigar Boxes
- Old Tins
- Small China Cabinet
- Mid-Century Wooden Cabinet
- 2 Standing Lamps
- Wall Decorations
- ANEW Anti Aging - New in Box
- Clocks
- Suitcases
- 2 Gray Side Chairs - By Hooker Furniture
- Christmas Decorations
- Knick Knacks
- DVDs
- Wooden Electro Record Player - AM/FM Radio & Disc Player

- Cookbooks
- 3 China Sets - Edwin M Knowles, Claremont & MIKASA
- Carnival Glass (of all kinds)
- Crystal
- Shirley Temple Blue Glass
- Pink Depression Glass
- Vintage Cocktail Utensils
- Salt & Pepper Shakers
- Miniature Tea Sets
- Avon Cape Cod Red 1876 Goblets
- Humpty Dumpty Glass Dishes
- Farberware Electric Skillet
- Crockpots
- Utensils
- Coke Glasses
- Silverware
- Tupperware

And So Much More!!

CASH OR CHECK ONLY • NO CREDIT OR DEBIT CARDS

MECHANIC & TIRE SHOP RETIREMENT AUCTION

SATURDAY, AUGUST 10, 2024-10:00 AM

Location: 1649 S St Hwy 183, Clinton, OK (behind Weldon Truck Parts)

VEHICLES * SHOP EQUIPMENT * AUTOMOTIVE LIFTS * MAN LIFT * TRAILERS * FORKLIFT

SCISSOR LIFTS * TIRES* WHEELS * JACKS * SHOP TOOLS * TOOL BOXES * MISCELLANEOUS

OWNER: CLINTON TOWING & REPAIR – DANNY WATKINS

PUTMAN AUCTION COMPANY CORDELL, OKLAHOMA

ROBERT PUTMAN Auctioneer/Broker 1409 Pheasant Run - Cordell, Oklahoma 73632 Cell # (580) 660-1149 or (580) 660-0752 website: www.putmanauction.com

WENDY PUTMAN Cashier "Service is our Strength" email: putmanauction@att.net

Visit website for more pictures! Loader & lunch available!

Any announcements made day of sale supercedes all written announcements. Not responsible for accidents.

Storage Containers

Custom Door & Window Installation



Larry White
580-254-4719
580-254-0230

CREDIT CARDS NOW ACCEPTED

Automobiles

Paying cash for junk cars and trucks, Lawton, Duncan, Elgin, Frederick Hobart and Altus, \$200 and up for any complete cars, free towing, call Tim at, 580-583-3235. 12/38

2012 King Ranch 6.7 diesel, 78,000 mile, new tires, 580-727-1819 4/34

2011 Extended Cab GMC Sierra 1500, Z71 pickup, 5.3L 4WD, very good condition, 201K miles, \$10,800, 580-445-7120. 4/35

Auto Parts

For Sale: Factory front and rear bumper for a 2020 2500-HD Silverado, like new, asking \$600, call 580-471-7034. 4/32

Rebuilt Chevy 4L60E, \$850 and up, with warranty 405-872-8387. 4/32

Rebuilt GM turbo 400 transmission and warranty, \$550 with same exchange, 405-872-8387. 4/32

Rebuilt GM turbo 350 transmission and warranty, \$550 with same exchange, 405-872-8387. 4/32

Rebuilt GM 700 R4 transmission and warranty, \$650 with same exchange, 405-872-8387 4/32

Rebuilt Ford, Dodge, Jeep rear wheel drive automatic transmission \$550 and up with warranty, 405-872-8387. 4/32

Events

Looking for Flea Market Vendors for the Route 66 Flea Market in Elk City October 4-6, 2024, email wohsfleamarket@gmail.com for more details 10/40

Food Stuffs

Watermelon and Cantaloupe will be available at wholesale prices from Integrated Growers starting Monday 8-12-2024. Call 405-457-6455 for directions and loading appointments. NO LOAD TOO BIG OR TOO SMALL! 4/35

Guns/Knives/Bows

Model 29 44 mag, Remington 870 200th anniversary, FAIR O/U 12 ga., call 806-334-1316. 2/33

Winchester Model 62A, very good condition, \$1000 OBO, 580-682-3016. 2/33

Aimpoint Duty RDS red dot scope, Never used, still in box, \$375 OBO, 580-682-3016 2/33

Ruger 45 long colt, 7 in barrel; Ruger single 6 32 magnum, 6 in barrel; Ruger 22 pistol automatic 580-548-7780. 1/32

We specialize in AGRICULTURAL and INDUSTRIAL DETAILING and CERAMIC COATINGS

We rejuvenate faded paint and keep it protected with our industrial grade Ceramic Coating!

Our **CERAMIC COATING** helps equipment stay clean longer and protects against chemicals.

We also offer our **ANTI-CORROSION CLEAR COAT**. It can be sprayed clear or tinted any color! It also helps prevent rust and is self-cleaning.

We are Fully Insured and Certified in all of our products and services.

WE WILL COME TO YOU!
No Need to Haul it!
420 South 4th St.,
Clinton, OK
580.445.0110
Military & first responder discounts.



EZ - HAUL HAY TRAILERS



A great selection in stock and ready to go to work!



580-995-4942 | US Hwy 34 & 60 • Vici, OK
WWW.EVERETTSWELDING.COM

Scrap Happens!
When it does come see us!



McALESTER, OK

Tin - \$140.00 net/ton
Cars up to \$150.00 net/ton
Heavy metal up to \$170.00 net/ton
Aluminum Cans \$0.35/lb



918-429-0505

4903 E, E US HWY 270
McAlester, OK 74501

<https://yaffeco.net>



MM Metal Mart

THE RIGHT MATERIALS FOR THE RIGHT PRICE!

Whether your project is large or small, WE APPRECIATE YOUR BUSINESS!

STEEL ROOFING Residential & Commercial	METAL BUILDINGS Prefabricated & Weld-up Buildings	ROLL-UP DOORS & Walk Doors	INSULATION Vinyl Back & Reflective
PANELS MAX-RIB "R"-PANEL	CARPORTS 	CUSTOM TRIM Fabricated on-site	TOOLS Blades & Hex Drivers
SKY LIGHTS Polycarbonate Skylight Panels	RIDGE VENTS 	RECEIVER CHANNEL Square Tubing	PANEL CLOSURES Universal & Vent Closures

METALMARTS.COM

NEW LOCATION: 10280 I-27 in Amarillo, TX • 1-800-677-2519 • 1-806-622-2230

WE LOVE THIS JOB!

When a business gets and keeps good people, it says alot about the company.
Long timers keep staying and lots of folks want to join in the fun.

Our staff is BIGGER than ever and BETTER than ever!



Blake Brewer
President



Shawn Wilson
30 Years, Sales, On Air



Randy Britton
30 Years, Sales



Nathan Brewer
23 Years, Sales, On Air



Gabe Edney
22 Years, GM



Landry Brewer
18 Years, On Air



Candace Kluth
9 Years, Graphics / Web



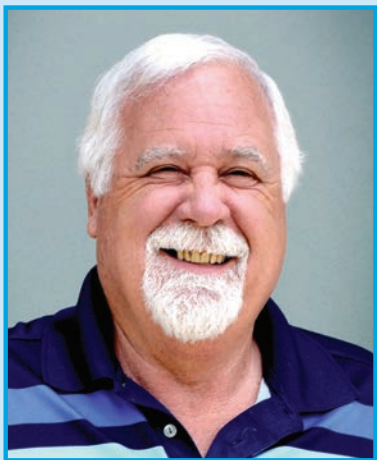
Tara Oliphant
8 Years, Graphic Artist



Aaron Kauk
7 Years, Sports/Traffic



Jared Atha
6 Years, Sports/News



Butch Black
3 Years, On Air



Jimmy Clark
3 Years, On Air



Jadyen Makay
8 Months, On Air



Kim Jordan
7 Months, Sales



Haley Robertson
2 Months, Graphic Artist



Jordan Cain
2 Months, On Air

 **aragon** Communications

96.5FM  **KECO**

 **Kool 94**
94.3 FM

KADS
THE SPORTS ANIMAL
98.1FM

 **BigElk**tv.com

 **Paragon**
Digital Advertising



ThePennyNews.com

 **paragontv.com**