



CONTENTS

Auctions	19	FINE LINE	Hunting	11
Auto Parts	13	ROUTE 66	Lawn&Garden..	11
Automobiles	11	AUTO SALES	Miscellaneous..	15
Boats.....	1	Page 3	Mobile Homes..	16
Butchering	4	Today in Ag	Motorcycles	4
Cattle	9-10	Page 4-5	Oil/Minerals	7
Classic Cars	10	TRADIO	Personal.....	16
Dogs/Cats	19	Page 6	Plumbing.....	16
Events	2	MCKINSEY	Real Estate.....	17
Farm Equip.....	2	Ford	Roofing	13
Firewood	13	Page 13	Seed.....	10
For Rent	18	WINDY	Services.....	10
Garage Sale	2	Page 20	Trailers.....	19
Golf	14		Tree Services ...	14
Hay/Feed.....	1		Want to Buy.....	13
Help Wanted ...	12		Weather	7
Horses	1			

Horses

We buy and sale horses of all classes year round, TH Livestock, Ty and Kade Hays, 806-206-5440. 24/37

MOUNTAIN VIEW LIVESTOCK SALE

Want to buy horses, donkeys, mules, llamas, ponies, and other livestock related items, Mountain 806-654-5340, Mountain View, Ok. 4/17

Horse Buying Station, all weigh, loose, & gentle riding horses, TH Livestock, Ty & Kade Hays, 806-206-5440. 24/29



RETIRED RACE HORSE

½ Quarter, ½ Thoroughbred. Good looking and gentle. 16 Hands Bay horse. Broke and rides. Jumper prospect. Papper Ed bloodline.

Good prospect for barrel racing.

Will sell for \$10,000 or trade for used aluminum trailer with living quarters, 3-horse slant or used Power Stroke. CALL 575-749-5400

Hay/Feed



BMR RD Bales, 5x6, would make great grinding hay, Guthrie Ok 405-760-4265. 1/15

Hay For Sale: Love grass, 4x5 round bales, good clean hay. 2021 season, \$45 per bale, Can load, located NW of Vici. Call 580-799-2596. If no answer leave message. 4/18

Large rounds Alfalfa, \$110, , Large rounds Bermuda \$120, Candadian, TX, 806-323-3303. 4/16

Net wrapped Crabgrass hay and beardless wheat, 4x6 bales, North of Weatherford, call 580-445-8163. 4/15

For Sale: Large round bales of rye straw. Tim 580-515-9894. 24/34

Midland 99 grass sprigging \$140/acre, total cost fsa will pay \$130/acre if you qualify, we start planting March 1, sprigs only \$2/bushel O.S.U. measurements, Randy Henson 806-669-8516, Tom Christner 316-617-4437, Wheeler, Tx. 20/17

Hay for sale: Bermuda grass round bales, Blue stem, & Alfalfa in round bales , Oats, Millet and Wheat hay round bales, Ted Thimling, 580-885-7278 or 580-254-1705. 52/44

Irrigated Midland 99 Bermuda grass, excellent horse quality, small square bales in 21 bale bundles, stored on pallets in the barn, weed-free, sticker-free, put upright, \$11.42/bale, 21 bale minimum, 5x6 round bales, same hay, \$130 each, Yukon, Ok 405-630-8710. 24/05

Two Bar W Farms, Custom Swathing and Baling, For Sale: Small squares Alfalfa or Bermuda in 21 bale bundles, Kelly 580-819-0664 Jason 580-819-3855. 24/30

Boats

2016 17ft tracker pro guide, v-175, deep-v aluminum mercury 115, 4stroke, 55lb thrust trolling motor, in new condition, motor has approx 20hrs \$21,500, 580-515-9048. 4/15



FREE INSPECTIONS & ESTIMATES
580.515.3208
CLINTON, OK 73601
**METAL • FLAT • WOOD
COMPOSITION SHINGLES**

BETTER SERVICE • BETTER QUALITY • BEST VALUE



CHEYENNE OLD SETTLERS REUNION



APRIL 19 - 23, 2022 • CHEYENNE, OK

Registration in the Star Building Tuesday-Friday 10AM-4:30PM in the Rook Lobby Saturday 8AM-1PM
TUESDAY APRIL 19, 2022

9AM-3PM Commemorative Cancellation Stamp at Post Office
6PM Talent Show at Cheyenne School Auditorium FREE ADMISSION

WEDNESDAY APRIL 20, 2022

9AM-3PM Commemorative Cancellation Stamp at Post Office
7PM Gospel Sing at Cheyenne School Auditorium FREE ADMISSION

THURSDAY APRIL 21, 2022

9AM-3PM Commemorative Cancellation Stamp at Post Office
10AM-4:30PM Quilt Show at Baptist Family Center FREE ADMISSION

1:30PM-3PM Roll One Room School
7PM Styles of Our Past Style Show at Cheyenne School Auditorium FREE ADMISSION

7PM Whisker Contest at Cheyenne School Auditorium FREE ADMISSION
FRIDAY APRIL 22, 2022

9AM Trail Rides from Reydon & Strong City
9AM-3PM Commemorative Cancellation Stamp at Post Office

10AM-7PM Quilt Show at Baptist Family Center FREE ADMISSION
11AM "Every Five Year" Group Photo Security State Bank, Everyone Invited

1:30-3PM Roll One Room School
4:30PM Welcome Free Feed hosted by Northfork Electric/Dobson Telephone FREE ADMISSION

6PM-10PM Historic Tent City on lot by bank clock, come sit and visit
7PM PRCA Rodeo at Arena, Tickets \$10 advance or \$15 at gate, under 5 free, Beutler & Son

9PM -1AM Rodeo Dance at Ag Pavilion, Lyle Parman & the SlideBar Band, \$10 Donation
SATURDAY APRIL 23, 2022

8:15 9 Mile Run from Strong City to Cheyenne
8:30AM-10AM Commemorative Cancellation Stamp at Rook Lobby

8AM-1PM Quilt Show at Baptist Family Center (closed during parade)
9AM Quilt Awards presented FREE ADMISSION

9AM-5PM Outdoor Arts & Crafts Show
8AM-10AM, 11AM-3PM Historic Tent City on lot by bank clock with Living Historians

10AM Huge Parade begins
Crowning of Cheyenne-Arapaho Old Settlers Queen

12PM FREE BARBECUE sponsored by Security State Bank at Ag Pavilion
2PM PRCA Rodeo at Arena, Tickets \$10 advance or \$15 at gate, under 5 free, Beutler & Son

9PM -1AM Rodeo Dance at Ag Pavilion, Lyle Parman & the SlideBar Band, \$10 Cover Charge
2PM-4PM CHS Alumni Basketball Games, CHS Gym

Alumni Activities
MANY MORE EVENTS AROUND TOWN

8AM-5PM Washita Battlefield NHS open Daily
RMC Chamber of Commerce open for business.

Check out the Old Settlers Reunion Facebook page.
Rodeo Tickets available at Smith Ag and Security State Bank in Cheyenne,

and Circle A Western Wear in Elk City


BULLSEYE
PEST & TERMITE SERVICE
(580) 225-7327 • 800-427-3439
"We Kill What Bugs You."

NW Oklahoma's Premier Pleasure Ride
COME CELEBRATE OUR 40th RIDE!

Best View in NW Oklahoma!

**40TH ROMAN NOSE HILLS
TRAIL RIDE**
WATONGA KIWANIS

April 22nd - 24th

Campground at Wolfe Ranch overlooking Roman Nose State Park, Watonga, OK

• Guided Trail Rides (Friday - Sunday) • \$75/Rider, \$50/12 and Under (Please Pre-Register/Pay at Gate)

• 7 Hot Meals Included for Paid Riders • New Trails Overlooking Roman Nose Park & Lakes

• Entertainment / Auction • No Credit Cards Accepted • Call if More Than 4 in Party

You must provide your own horse with current negative Coggins.

Free Raffle
giveaways to
paid riders

**Call in registration encouraged, Contact Jeff Fritz
at 580-830-0235 or Alane Buseman 405-834-9616**

www.RomanNoseHillsTrailRide.com Benefits to: Watonga Kiwanis

Auctions

**Storm Date
MAY 7th**

**TRUCKS & COMBINES
TRACTORS TRAILERS**

**SATURDAY
APRIL 30th
9AM 2022**

**SHOP & FARM EQUIP.
CATTLE EQUIP. & REC.**

LOCATION:FROM: KEYES, OK- 3 Miles S on 171 to Hwy 64, 3 miles W to NS40, 1 mile S. BOISE CITY, OK
12 Miles E on 64 Hwy to Mile Marker NS40, 1 mile S.

MICHAEL OVERSTREET ESTATE & OTHERS

**TRACTORS • COMBINES • FARM EQUIPMENT • TRUCKS • PICKUPS • SHOP EQUIPMENT
CATTLE EQUIP • MISC EQUIP • TRAILERS • RECREATION • LOTS MORE!**

**ONLINE BIDDING ON SELECT ITEMS AT equipmentfacts.com. Click online to view catalog and to pre-register.
ONLINE BUYERS ONLY: 10% Buyers Premium will be charged on all items under \$5,000, 8% \$5,000 - \$10,000, 6% over \$10,000**

Taxes will be charged unless the buyer brings copy of tax #. Blake Shores 405312-1796 or email blakeshores23@gmail.com

TERMS Cash or check with proper I.D. day of sale. Settlement must be made day of sale. All descriptions of items are believed to be correct, but are in no way a warranty or guarantee. All items sold "As is, Where is" on personal inspection of the purchaser. All announcements made Sale Day are final and have priority. We are not responsible in case of accidents or theft. Buyer will have one month to remove items.

LUNCH SERVED

**Auctioneer
TERRY SHORES
License #10092**

AUCTION

SHORES

SERVICE

NUMEROUS OTHER ITEMS TOO MANY TO MENTION

Route 1 Box 81H
Goodwell, OK 73939
580-349-2455
Cell (806) 339-3490

Visit us at www.shoresauction.com

For Further Info: TERRY SHORES - 806-339-3490, 580-349-2555 BLAKE SHORES - 405-312-1796 Personal Rep. - Laurie Simmons - 620-230-8875



GOT AN EVENT YOU WANT TO ADVERTISE?
 Call one of our sales professionals today!
 (Deadline is Fridays 5pm)
Randy Britton 580-331-9753
Nathan Brewer 580-339-6623
Shawn Wilson 580-515-5326
Lexie Brown 580-339-1993

UPCOMING AUCTIONS

Real Estate • Farm Equipment • Heavy Equipment • Your Auction

APRIL 30, 10AM - Albert Korfman Retirement Auction
 Farm Equipment -Custer City, OK

MAY 14, 10AM - Finnell Trust Real Estate Auction
 Farm Machinery, Household -Elk City, OK

MAY 28, 10AM - Noble Coy Estate Auction - Farm Equipment -Carter, OK

AUG. 27, 10AM - Quality Farm Tractors & Equipment -Altus, OK

LIVE and ONLINE Auctions - xitauctions.com

Aubrey Latham, Auctioneer 580.393.4440

"XIT AUCTIONS READY TO WORK FOR YOU"

SPECIAL SALE

SATURDAY, APRIL 23rd • 11AM



350 YOUNG PAIRS 50 BRED COWS

30 BREEDING AGE BULLS 50 REPLACEMENT HEIFERS

8 Angus 2 Y/O Cow Calf Pairs

Dispersal - 160 Red Angus Cow Half Pairs 2-5 Y/O Calves are Red Angus

20 Angus 2 Y/O Cow Calf Pairs

25 Angus 2-4 Y/O Cow Calf Pairs

30 Angus 2 Y/O Cow Calf Pairs

50 Angus 2-3 Y/O Cow Calf Pairs

10 Angus 2 Y/O Cow Calf Pairs

10 Angus 2-3 Y/O Cow Calf Pairs

Replacement Heifers: 10 Charolais, 10 Angus

Bulls: 10 Red Angus, 8 Charolais, 3 SimmX, 10 Angus

• Bid in person or online

• Register at LMAAUCTION.COM

• Download the [LMARINGSIDE APP](#)

Concessions Available!

HOBART STOCKYARDS

Hwy. 183 North, Hobart, OK

Office 580-726-3306

Auctioneer
Dustin Glover

Owner
Rex Flaming
580-331-8547

Where we want your business and we do appreciate it!

Events

Sunset Riders (band) will play at the American Legion Post 41 at 1705 S. US 183, Clinton, OK, the 4th Friday of every month, 6:30PM-9:30PM, all ages welcome. Come enjoy live music and dance, alcohol and tobacco free. 4/15

Garage/Estate Sale

MOVING SALE North of Woodward - 2 miles on Hwy 412, 270 & 3, then left on CR38.. Vintage, antiques, possible farmhouse decor, 2 saddles, western tac, oversized recliner, lots of misc. Sale every weekend til gone. 2/16

1001 Madison Bessie, Ok, Cowboy and indigenous art-reproductions, carved headboard, art-sy knick knacks, horse tack, saddle stands, April 14th, 10am-5pm, April 15th 9am-5, April 16th, 9am-12pm, Kenna, 303-507-4424. 1/15

BIG RED BARN SALE, Open Friday and Saturday, 9:30 to 5:00, Sunday, 1:00 to 5:00, we have everything from, household goods to antiques! If you like flea market stuff you will love us, Check out our Facebook page "Big Red Barn Sale" and watch our Thursday evening video, Directions : From hwy 6 & hwy 152 south of Elk City. Go 3 miles south on hwy 6. 3 miles east on Rd 1220. 1/4 south. Big red and white barn. 580-450-0658. 17/25

Farm Equipment

2000 JD 566 Round Baler, 10,960 bales, been thru JD shop, shedded, net and twine, great shape mechanically, Leedey, \$12,500, 580-821-4811. 2/16

Like brand new 8 ton Doyle MFG fertilizer and lime spreader with hyd spinners and engage, \$20,000, 580-574-5375. 4/17



Sub soiler plow, \$3,000, Ripper plow, \$3,000, tires in good condition, Texola area, 806-256-3781. 4/15

ThePennyNews.com

John Deere 4895 Swather, 2700 HRS, 18 FT sickle header with new sections/drives, steel conditioners, \$32,000, Sentinel, OKLA. 580-393-1301. 4/16

Stay informed with local news at KecoFM.com

JD 500 grain cart, excellent paint and tires, \$6,800, 580-445-8657. 4/15

WANT TO BUY: John Deere tractors, running or not, 580-243-8610.

Wanted: Tractors dead or running, 2WD or 4WD, any kind, any size up to 2020 models, 405-641-7728. 26/26

WANTED: JD SQUARE BALERS, 348-346-336-224-214 any condition, 405-641-7728. 29/26

T&S trip feeder 1500# with tarp and controls no rust and works great. \$2000, please text me at 405-659-2677, Thxs 4/50



DAVIS IRON

Sayre, OK • 580-928-8277

The Davis Family has been serving Western Oklahoma for over 50 years. We buy all types of metals - copper, brass radiators, batteries, iron, etc.

MON-FRI 9AM-4:30PM

SPRING into a new **APARTMENT**

Remington Station
Ventura Heights
Windsor Point
ONE & TWO BEDROOMS
580.225.4495
\$195 MOVE IN SPECIAL
THRU APRIL

Made with PosterMyWall.com

INTEGRITY TREE SERVICE

Tree Trimming and Removal

FREE ESTIMATES

580-751-0114

C'MON HOME COWBOY CHURCH OPEN HOUSE

THIS SATURDAY, APRIL 16TH @ 5:30

4 miles west of Leedey on Hwy 47
behind the Willys Jeep

Oh my goodness sakes a livin, outfittin cottonpickin.

What are you doing?

Is your life a wreck?

You've tried everything and it falls apart or ends in heartache, pain or disaster. C'mon Home to Cowboy Church and see what God wants to do for you.

He'll take the mess of your life and turn it into something meaningful. Maybe you've given up on God. Give God a second chance. Come eat and we'll meet.

Cowboy up and give God a try.

Y'all come. See ya there. Yee Haw

C'mon Home Cowboy Church
Leedey, Oklahoma



Blades, Belts and Parts In Stock
WE DO SERVICE AND WARRANTY WORK

DJ's RENTALS & SALES, INC
580-225-1400 • www.djsrental.com
*Customer Text Line 580-799-7214

911 S Main St, Elk City, OK



We Deal In Steel[®]



405-377-8763

railroadyard.com

Stillwater, OK.

YOUR ONE STOP STEEL SHOP



STEEL PIPE - ALL SIZES



STRUCTURAL STEEL



CUSTOM STEEL FABRICATION

There is a better way...



Got something you really want to sell? Put it in front of the faces of tens of thousands of readers in the Penny News. Call today to place your ad!

580-225-7355

VISIT ThePennyNewsOnline.com or call 580-225-7355 to place your ad.

Deadline each week for classified ads is Mondays 5PM.



\$14,995

2008 FORD F150
Longbed, 4x4, Off-Road Pkg, Xtra Cab,
86K Miles, 4.8 V8, Local Trade-In
Super Clean, Non-Smoker, New Tires



\$22,550

2004 DODGE 2500 SLT SUPER DUTY
Only 140K Miles, 5.9 Cummins Turbo
Diesel, 1-Owner, Local Trade,
Non-Smoker, Ultra Nice



\$39,550

2017 FORD F150
4x4, Crew, Eco-Boost, 1-Owner,
52K Miles, Non-Smoker, Brand
New Tires, Mint Condition



\$15,995

1998 DODGE 1500 RAM SLT
4x4, Low Miles, New Tires, Locally
Owned Trade-In, Both Keys &
Books, All Records, Non-Smoker

FINE LINE **AUTO SALES**

4713 W. 3RD, ELK CITY
580-225-9111 or 580-303-8291 Cell

WE BUY VEHICLES.
TOP DOLLAR PAID!



\$17,995

2013 LINCOLN MKZ
3.7 SE, Only 70K Miles, New Michelin Tires,
Non-Smoker, Panoramic Sunroof, NAV,
Hard Loaded, Mint, Both Keys & Books



\$13,995

2014 DODGE CHARGER SE
20" Factory Wheels, Brand New
Tires, Locally Owned Trade-in, Super
Clean, Rally Package, Must See

FINANCING AVAILABLE - W.A.C.



\$17,995

2011 GMC YUKON SLT
4x4, Leather, Sunroof, Rear DVD, 1-Owner,
Local Trade-in, Non-Smoker, Both Keys &
Books, New Tires, Super Clean



\$19,995

2015 FORD TAURUS SEL
53K Miles, Leather, Driver Assist
Pkg., Non-Smoker, Both Keys &
Books, Local Trade-In



\$11,950

2012 HYUNDAI VELOSTER SE
3 Door Coupe, Fully Loaded, Non-Smoker,
New Tires and Brakes, Complete Suspension
Service, Super Clean, Must See



\$11,950

2011 CADILLAC DTS
Luxury, North Star V8, Locally Owned
Trade-in, New Tires, Both Keys &
Books, Super Nice

Today in Ag

JIMMY'S TIP OF THE WEEK

"Plant those tomatoes!!"

HOBART STOCKYARDS



Hwy. 183 North,
Hobart, OK
Office 580-726-3306

**WEEKLY CATTLE SALE
EVERY WEDNESDAY at 9:30AM**

**- TAKING CONSIGNMENTS -
MARKET REPORT 4/6/2022**

Type	Wt Range	Avg Wt	Price Range	Avg Price
STEER	300-399	362	\$194.00-\$225.00	\$211.14
STEER	400-499	468	\$189.00-\$208.00	\$204.11
STEER	500-599	550	\$40.00-\$191.00	\$174.75
STEER	600-699	670	\$125.00-\$154.00	\$145.00
HFR	300-399	359	\$141.00-\$184.00	\$173.64
HFR	400-499	450	\$140.00-\$173.00	\$164.20
HFR	500-599	550	\$90.00-\$160.00	\$145.29
HFR	600-699	654	\$110.00-\$140.00	\$132.45
HFR	700-799	751	\$110.00-\$133.00	\$128.00
COW	1000+	1072	\$62.50-\$87.00	\$68.61
COW			\$900.00-\$1285.00	\$1104.00
COW	PR		\$1110.00-\$1425.00	\$1267.50
BULL	1000+	1575	\$20.00-\$119.00	\$104.91

Bid in person or online.
Register at LMAAUCTION.COM
Download the [LMARINGSIDE](#) App

We receive Cattle all day Mondays & Tuesdays.
Cattle will be well fed and watered.

OWNER: REX FLAMING 580-331-8547
AUCTIONEER: DUSTIN GLOVER

**Where we want your business
and we do appreciate it!**

FLY SEASON IS HERE!

LET US HELP YOU GET CONTROL



EFFECTIVE • ECONOMICAL • CONVENIENT

FARMERS UNION CO-OP

720 SOUTH MAIN ST. ELK CITY, OK
(580)225-0191 WWW.ELKCITYCOOP.COM

Sack Mineral & Mineral Tubs with fly control

PREVENTS ADULT HORN FLY EMERGENCE FROM MANURE
OF TREATED CATTLE



Butchering



The Butcher Block Custom Meat Processing in Canute, Oklahoma has processing dates available for May and June. Call today to get on the books. 580-339-1937. 5/18

Motorcycles

2005 Harley Ultra Classic touring bike, excellent condition, \$7,500, for more info call 405-542-7062. 4/17



2017 Harley Limited, 7500 miles, Black Quartz, No rides, No personal checks, \$20,500, 580-649-9705, Altus. Serious inquiries only. 4/17

Color Ads Every Week

\$25 each
580-225-SELL (7355)
or 1-800-675-1416

KECO 96.5

LISTEN LIVE

MON-FRI @ NOON!

kecofm.com/today-in-ag

Today in Ag

with Jimmy Clark



B&L RED ANGUS

Follow us at:
B & L Red Angus

Visit blredangus.com for online catalog and videos

Benji & Lori White 580-582-6313 Putnam, Oklahoma

1st National Bank & Trust

We know agriculture!

Elk City, OK • 580-225-2580
Sayre, OK • 580-928-2580

There is a difference.....
www.fnbec.com

Knutson IRRIGATION

Anything in Irrigation

Knutson Irrigation Design, LLC

15250 W. Sunshine Road | Yukon, OK 73099
Toll Free: 800-373-9325 | Phone: 405-354-6925
Fax: 405-354-5529 | Cell: 405-830-5296

WWW.EVERETTSWELDING.COM

EVERETT'S WELDING & REPAIR, INC.

580-995-4942
US Hwy 34 & 60 • Vici, OK

Great Plains Bank

Greater. Together.

(888) 449-2265 www.gpbankok.com

LIVESTOCK NUTRITION DISTRIBUTOR
(BETTER FEED BETTER RESULTS)
CATTLE-SHEEP-GOAT-HORSE

SEI AGRA TECH

Your local one-stop shop for all things cover crops, ag chemicals, and starter fertilizers

405-370-9322 580-225-0317

OKLAHOMA FARM BUREAU INSURANCE

Micky Lively Greer County

FOR INSURANCE CALL MICKY

CALL ANYTIME! 580-782-3827

THE WHEELER GENERAL STORE

HIGHWAY 152 WHEELER, TX 79096
OFFICE: 806-826-5531 CELL: 806-662-5369
EMAIL: WHEELERGENERALSTORE@OUTLOOK.COM

Nathan J. Hefley

Hobart Farm & Garden HFG

Hobart, Oklahoma

HOBART FARM & GARDEN

QUALITY HI-PRO LIVESTOCK FEEDS

Bulk Feed Delivery
Feed Bags • Feed Sacks

580-726-3351 - 1030 S. Monroe, Hobart OK
www.hobartfarmandgarden.com
HOURS: M-F 8AM-5:30PM • SAT 8AM-NOON

Today in Ag

Some land is not for sale



Jerry Nine
Woodward
Livestock
Auction
Woodward, OK

A customer of mine from Coalgate, Oklahoma, said a man came by his house and said, “I want to buy your land.”

This rancher is about 75 years old. The rancher said, “My ranch is not for sale.” The man trying to buy his land, said, “Well now, everything is for sale.” I would guess this rancher runs about 250 to 300 cows. He

said, “Well, my land is not for sale at any price. I am 75 years old and this is my life.” The investor said, “I will give you \$3,000 per acre.” The rancher said, “I won’t sell it if you give me \$5,000 per acre.”

So I called a friend of mine who lived within 20 miles of this rancher and told him the

story as I know he has several kids and is, like most of us, trying to make a living. This friend said close by is McAlester, Oklahoma, near where the United States has a weapons-making factory. He said the Chinese are not only buying lots of land in that area they have doubled the price from a few years ago. He said they are doing the same thing in Texas around a military base. I am not a prejudiced person, but I am for America and what is best for America.

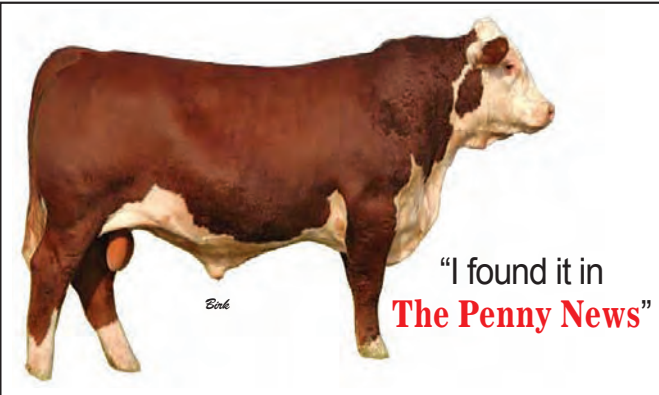
About a month ago we had four Asian women come to our sale and they were asking a lot of questions about cattle. And you could tell that they were not familiar with cattle at all, but we did our best to answer their questions. I am not saying this is what they were doing but another man explained the one reason some want to buy cattle and pay cash is that when they bring the cattle back and sell them then they get a check. They can deposit a check in the bank but not large quantities of cash. Again, I don’t care what nationality person is or what color. I hate to disappoint some of you, but God does not like white people better.

My generation had Wonder Woman and this new generation has “I wonder if it is a woman?”

Police have just confirmed that man who tragically fell from the roof of an 18th floor night club was not a bouncer.

A friend of mine said he better start working out because he can lift a 12 pack of beer with his left arm up to his waist but when tried with his right arm, he only got it up to his knees. He said, “I better join that new workout business in town because I must be getting weak.” I said, “I wouldn’t do that I would just buy a six pack instead.”

Editor’s note: Jerry Nine, Woodward, Oklahoma, is a lifetime cattleman who grew up on his family’s ranch near Slapout, Oklahoma.



4C Livestock Equipment

- MANUAL CHUTES
- PANELS
- WW LIVESTOCK EQUIPMENT

CHARLES VOGT
580-819-0322

Weatherford, OK
www.4clivestockequipment.com

ELK CITY LIVESTOCK AUCTION



South Hwy. 6 • Elk City, OK
I-40 Exit 38
SALE EVERY FRIDAY • 9AM
580-225-6754

- CONSIGNMENTS -

April 15: From Ashland 20 2-6 yr old pairs, from Shamrock 3 3-4 yr old pairs, from Clarendon 80 older cows and their calves, from Durham 45 middle age to older cows and their calves, from Elk City 80 cows and calves, and from Erick 30 cows and calves.

- MARKET SAMPLES -

APRIL 08, 2022 - Hd Ct. 965

STEERS

Sweetwater	4	468	\$199.00
Mangum	5	482	\$199.00
Allison	8	524	\$172.00 ²
Wheeler	12	535	\$187.50
Dill City	4	540	\$189.00
Foss	4	566	\$169.00 ²
Blair	16	569	\$182.00
Mtn. View	7	570	\$178.50
Wheeler	7	618	\$175.50
Cheyenne	3	660	\$165.00
Sayre	4	694	\$154.00
Sentinel	8	713	\$162.00
Leedey	7	718	\$158.50
Allison	11	767	\$153.50

HEIFERS

Weatherford	4	404	\$183.00
Miami	4	415	\$166.00 ¹
Cheyenne	3	442	\$149.00 ³
Shamrock	16	460	\$173.50
Lone Wolf	7	487	\$171.00
Childress	5	543	\$156.00
Foss	6	587	\$164.00
Cheyenne	3	607	\$153.00
Elk City	5	615	\$144.00 ⁴
Elk City	19	633	\$154.00
Sayre	3	687	\$145.00
Sayre	18	699	\$141.00
Dill City	7	794	\$133.00
Sweetwater	9	1017	\$110.50

Butcher Cows: \$44.00-\$100.00 Bred Cows: \$785.00-\$1,460.00
Butcher Bulls: \$87.50-\$127.50 Pairs: \$385.00-1,650.00

SALE EVERY FRIDAY - 9AM

580-225-6754

¹ Short Weaned, ² Cutter Bulls, ³ New Crop, ⁴ Calves

To consign or for info,
call Brandon Hickey, 580-497-6095

SALE EVERY MONDAY - 10AM



Call in your
consignments
to us soon!

WESTERN OKLAHOMA LIVESTOCK AUCTION

APRIL 11, 2022 • 1842 HD

April 18 Consignments: 110 8 wt str.

STEERS

Mutual	5	305	\$227.00
Elk City	5	307	\$700.00 ²
Weatherford	3	375	\$214.00
Foss	48	409	\$225.00 ³
Snyder	4	500	\$179.00
Dill City	4	528	\$179.00
Arapaho	10	554	\$193.50 ³
Canute	7	611	\$173.00
Arapaho	17	655	\$168.00
Elk City	29	698	\$168.25
Clinton	2	705	\$143.00 ¹
Sweetwater	5	772	\$154.00
Weatherford	139	792	\$157.25

HEIFERS

Weatherford	5	283	\$580.00 ²
Mangum	10	456	\$184.00
Foss	101	492	\$183.50
Elk City	20	551	\$179.00
Miami	4	553	\$174.50
Watonga	5	562	\$166.00
Clinton	4	588	\$171.00
Leedey	60	620	\$162.75
Thomas	29	626	\$155.00
Sweetwater	12	658	\$147.00
Hydro	3	677	\$153.00
Canute	13	695	\$146.50
Custer City	27	758	\$142.50

BUTCHER COWS - \$30.00-\$95.00

BUTCHER BULLS - \$83.00-\$121.00

BRED COWS - \$950.00-\$1,335

PAIRS -

¹Cutter Bulls, ²By Head, ³Weaned

WWW.WESTOKLIVESTOCKAUCTION.COM

23031 N FRONTAGE RD CLINTON, OK • I-40 EXIT 71

BRANDON HICKEY 580-497-6095

Woodward Livestock Auction Report

THURSDAY, APRIL 7, 2022

Receipts: 3,661 Last Reported: 3,176 Last Year: 3,935

Compared to last week: Feeder steers and heifers 2.00 to 5.00 lower. Steer calves 8.00 to 10.00 lower. Heifer calves 8.00 to 10.00 lower except 400-500 lb heifers 5.00 to 10.00 higher. Demand was moderate. Quality average. Supply included: 100% Feeder Cattle (58% Steers, 38% Heifers, 4% Bulls). Feeder cattle supply over 600 lbs was 63%.

STEERS Medium and Large 1 (Per Cwt / Actual Wt)

55	352-397	363	200.00-227.00	220.70
5	363-372	367	207.00	207.00 ¹
66	410-444	426	205.00-219.00	208.08
44	464-486	473	191.00-215.00	206.43
5	475	475	187.00	187.00 ¹
80	503-545	529	190.00-207.00	201.15
3	533	533	191.00	191.00 ¹
250	555-587	566	176.00-196.00	189.25
10	561-566	565	172.00-184.00	180.42 ¹
327	601-644	624	169.00-191.00	179.36
241	658-698	677	159.00-179.00	168.69
150	706-733	710	154.50-169.50	164.01
76	759-786	774	155.00-158.50	157.02
111	815-845	837	147.50-157.00	149.88
159	885-893	886	141.50-148.50	147.70
47	904-913	906	147.50-149.60	149.10
29	955-970	964	137.50-138.00	137.79
17	1034-1041	1035	135.00-136.00	135.82
20	1224	1224	124.00	124.00

HEIFERS - Medium and Large 1 (Per Cwt / Actual Wt)

8	306-346	325	185.00-206.00	195.14
2	310	310	165.00	165.00 ¹
13	350-391	370	182.00-204.00	195.79
5	360	360	177.00	177.00 ¹
43	410-440	437	191.00-213.00	198.86
2	440	440	147.00	147.00 ¹
74	451-495	468	180.00-202.50	192.99
6	467-482	472	152.00-170.00	163.87 ¹
114	521-544	534	161.00-180.50	168.16
10	521-537	529	150.00-178.00	164.62 ¹
98	555-597	580	148.00-161.00	158.02
2	575	575	141.00	141.00 ¹
95	612-645	622	142.00-159.00	157.04
268	654-695	678	143.00-157.75	151.16
126	703-745	729	140.00-147.00	143.12
100	755-775	760	141.50-142.00	141.79
90	823-838	833	135.00-138.50	136.03
10	858-870	865	132.00-135.50	133.39
24	902-911	907	131.00-131.50	131.23

¹ Unweaned ² Thin Fleshed

Woodward Livestock Auction

900 Lakeview Dr, Woodward, OK | Jerry Nine 800.442.5548



TRADIO



Tradio can be heard every Monday through Friday from 10am – 11am on KECO 96.5FM.
Callers can call or text 580-225-9697 to buy, sell, or trade during that time. Only calls are published here. These calls are from 4/6-4/12



WEDNESDAY

FOR SALE : bunk beds, 5 sets lockers, call 515-4180.

FOR SALE: .22 pistol and .22 rifle, Looking for a 2 or 3 bed house to rent in Elk City, call 799-7373.

FOR SALE: 6x10' flatbed trailer, heavy duty, camper frame, good tires, spare tire, asking \$150, sherwin williams paint, HD loading ramps, near Rocky 580-530-2168.

FOR SALE: 8 in Ford tractor, runs good, changed from 6 to 12 volt, 2 new rear tires, asking \$2,500, 2 outboard fishing motors, 25 hp mercury for \$200 and 10 hp johnson for \$100, 471-1244.

SERVICE: does ironing, 799-7790.

FREE: queen size mattresses, call 580-303-8888.

FOR SALE: 2013 Chevy Duramax 4x4 ext. cab, Deweeze bed, very good truck, 220k miles, everything works, text 806-334-2068.

SERVICE: cleans houses and takes care of elderly people, **FOR SALE:** bathroom vanitiesmisc, Looking for handyman to help with toilet and floor, call 580-799-0864.

FOR SALE: 26" manned bicycle, aluminum roller, asking \$40, 580-275-9240, in Clinton.

FOR SALE: pecans, 1187 Remington auto shotgun, MREs by the case, 580-318-0859, in Altus

FOR- SALE: 3 step concrete porch, asking \$75, call 660-1988.

FOR SALE: Troy built rear tine rototiller, riding mower, air compressor, 580-339-6531.

FOR SALE: reptile tank, not huge, best offer, turtle beach headset, OU 1990 leather jacket, 580-340-5986.

FOR SALE: small utility trailer, asking \$160, Durango western boots, Justin lace up work boots like new, size 10 double E, 580-374-1142.

FOR SALE: 24.5 drive tires, 95% tread, 580-445-8706 in Fay

FOR SALE: 6x24 gooseneck cattle trailer, solid sides, 580-821-6739.

FOR SALE: Pygmy buckling, 580-799-3184.

FOR SALE: electric stove, would trade for good working fridge, 04 Dodge dually, flatbed, cummins 6 speed, text 580-799-2696.

FOR SALE: 6 wk old AKC registered Daschund puppies, shots, wormed, raised inside home, asking \$500, call or text 580-660-4050 or 580-660-0431 (leave message if no answer)

FOR SALE: model 14 s&w 38 special, asking \$700, pin barrel, 580-530-1113.

FOR SALE: 92 F250 ext cab 4x4 longbed, asking \$1,500 obo, call or text 806-216-1320.

FOR SALE: bunnies, captains desk, baby items, call 580-515-0434.

LOOKING FOR: 350 Chevy motor with 350 or 400 trans, 405-833-6493 in Clinton.

THURSDAY

FOR SALE: John Deere riding mower, runs and drives, needs a little TLC, asking \$200, 2 year old white billy goat, asking \$300, Sherwin Williams paint, in Rocky, 580-530-2168.

FOR SALE: 3 bed, 2 bath, doublewide trailer, metal roof, fireplace, all electric, CH/A, asking \$5,000, 15k btu 110 window unit AC, asking \$150, 23k btu 220 window unit AC, asking \$200, 405-856-4182.

FOR SALE: fence material – inline brace, 4 corner braces, several pieces of 2 5/8" pipe, 580-374-1460.

SERVICE: mowing, Sentinel/ Rocky/ Burns Flat/ Hobart, call 405-684-1991.

FOR SALE: 2021 Ford F250, 4x4, 12.5k miles, leveling kit, alot of extras, call 580-774-9706 or 580-821-1641.

FOR SALE:Taurus 9mm G3, 3 clips, 3 boxes ammo, holster, easyloader, box, asking \$450, 580-821-0039.

FOR SALE: used tires 225 55 16, Michellin car tires, great shape, full set, asking \$100, 110 air compressor, asking \$150, dozen young semi angus bulls, 580-497-6703.

FOR SALE: old style fridge, ice maker, works good , asking \$100, dryers and washing machine, 580-309-2307.

FOR SALE: 20' flatbed trailer, call 806-202-2207.

FOR SALE: PS3 and PS4 games, DVD's (kids, comedy, action, etc.), nailmaster finishing gun, electric, best, 580-340-5986.

FOR SALE: 2001 Chevy pickup, 3/4 ton, 4x4, ext cab, hay bed, excellent condition, asking \$15k, 405-542-7121.

FOR SALE: (4) big 5500 btu generators, on dollies, they run, have been sitting, need cleaned out, John Deere zero turn mower, 54" deck, runs good, something going on with steering, asking \$500, 16' boat trailer, asking \$200, tripod deer stands, 580-330-9012.

LOOKING FOR: good used self propelled lawn mower with bagger, call 580-729-2343.

FOR SALE: 11' trailer, asking \$700, 2 small johnson boat motors, asking \$125 each or \$225 for both, 580-302-2146.

FOR SALE: (2) 2019 Polaris 450 Sportsman 4 wheelers, 1 owner, thousands of baseball cards, asking \$350, call 580-660-1622.

FOR SALE: 22-250 Ruger, call 580-649-4536.

LOOKING FOR: chicken laying boxes, text or call 580-715-0310.

FOR SALE: 2006 Chevy duramax, 4 door, longbed, 4x4, solid black, 292k miles, call 214-478-7441 in Wheeler TX.

LOOKING FOR: 245/ 75 r 16 tires, 580-216-1786.

FRIDAY

FOR SALE: Generac 6500 watt generator, like new, asking \$600, 580-374-3718.

FOR SALE: electric cook stove/oven, GE brand, works, asking \$100, washing machine (doesnt drain)asking \$50, in Leedey text 580-799-2696.

FOR SALE: small chest type deep freezer, GE brand, 7.0 cubic ft, 37x22, asking \$125, motor chair, good shape, new charger and batteries, asking \$700, used like new Mr. Heater, 20k btu with connections, 2 propane tanks, asking \$200, in Sayre 580-928-7351.

FOR SALE: 2004 Lincoln Continental town car, beige in color, 4.6l, high miles, runs great, new tires, asking \$5,500 obo, call 580-254-9842.

FOR SALE: Nigerian pygmy buck, call or text 580-799-3184 or 580-799-9374.

FOR SALE: 1187 remington semi auto, no rust, asking \$600

FOR SALE: MRE's, \$50 per case, A and B menu

FOR SALE: limited clip chevy pickup rear end with disc breaks, 3.73 ratio 99-07 1500 Chevy, asking \$200, 806-886-8583.

REHOME or RESCUE: puppies and small pit bull, needs new home, 580-530-9006, leave message if no answer.

FOUND: Red Heeler on side of hwy, looking for home, call 580-390-0591.

FOR SALE: 2021 f250 4x4 12.5k miles leveling kit, extras, call 580-774-9706 or 580-821-1641.

FOR SALE: xbox game and ps3 games, Duluth brand tool holder, movies and game for PSP, 580-340-5986.

FOR SALE: commercial printer, misc tires 13"-20", mobile home tires, farm fresh eggs, 580-225-8641.

FOR SALE: queen size mattresses (clean, no tears), call only 580-303-8888.

FOR SALE: 2006 Chevy Duramax 4 door, longbed, gooseneck hitch, aux tank, 291k miles, body good shape, looks good, call or text 214-478-7441 in Wheeler TX

LOOKING FOR: a mechanic or tire changer to work part time, pays cash, need to have vehicle to get to Erick, 580-821-1873.

MONDAY

FOR SALE : carport, fits 4 cars, enclosed on both sides, can be closed on ends, must take down and move yourself, 806-216-1294.

FOR SALE: kids "step 2 swingset", slide, play area, playhouse, 580-471-1557.

FOR SALE: 22 ammo, Remington thunderbolt, 1800 rounds, selling all together, in Elk City right now but lives in Sentinel, 580-751-0073.

FOR SALE: Samsung Galaxy cases for 10.1, 8.4,etc. taking best offer, brand new, granite stone diamond spike express grill, asking \$20, new in box, womens boots, size 9, asking \$20, 580-340-5986.

FOR SALE: 6x10 trailer, doors, ramps, near Rocky 580-530-2168.

FOR SALE: 5000 btu window unit AC, digital, asking \$50, small chest type deep freeze, GE brand, asking \$125, like new MR. Heater (portable propane/butane heater) comes with connections and 2 propane tanks, asking \$200, in Sayre 580-928-7351.

FOR SALE: 1997 Harley Davidson dyna springer in Elk City, 575-937-4543.

FOR SALE: 2021 F250, 4x4, 12.5k miles, leveling kit, many extras on it, call 580-774-9706 or 580-821-1641.

FOR SALE: jeans, Riggs by Wrangler, asking \$10 (38x36), Cinch FR jeans, like new, asking \$30, call 580-821-0923.

LOOKING FOR: a spray boom for ATV or lawn mower, Looking for large 220v air compressor in good condition, Looking for metal work bench/ welding table, **FOR SALE:** air ride seat for emi, brand new, still in plastic, taking offer or trade for AR style rifle/ hunting rifle, call or text 580-799-0011.

FOR SALE: parker crossbow, comes with hardcase, asking \$300. slide in Kenmore stovetp oven, asking \$300, call or text 580-583-8470.

FOR SALE: front load washing machines, LG brand, can send pics 580-309-2307.

FOR SALE: 7 drawer dresser with mirror, asking \$150, antique china cabinet, asking \$350 obo, call 580-821-1397.

FOR SALE: 15-month-old black angus bulls, gentle, good bloodlines, call 580-449-1259.

FOR SALE: 1991 Harley Davidson, full hardbags, red and gold, punched 1200 over, asking \$4000 obo, new carb, fresh service, new tires, call 330-203-7231.

FOR SALE: Ruger American predator in .308 with muzzle break, aftermarket stock, like new, asking \$700, 580-339-2818.

FOR SALE: double pillow top queen mattress with box spring and frame, asking \$100 obo, 2 black jack donkeys, \$200

LOOKING FOR: a full size "work" 4 wheeler with no issues, call 580-483-6221.

FOR SALE: 15" batwing mower, asking \$400, needs work. hay dolly, 1 bearing out, asking \$100, call 580-569-2886 in Snyder.

FOR SALE: 2002 Chevy Suburban, runs and drives, asking \$1800, couple weed eaters, call 580-500-7942.

TUESDAY

FOR SALE: 2 wood doors, asking \$50 each call 580-919-7169

Looking for someone to do some dirt work/ etc. 580-339-2870 in Burns Flat, ask for Arthur

Looking for grass/ leafland around Cheyenne, Berlin, Sayre areas 580-339-6673

FOR SALE: big dog mower, stout, great condition, purchased in 2017, 54" cut, text your name to 580-243-2481, will call you back

FOR SALE: 2 brand new sets of twin sheets, asking \$15 each call 580-821-1397

FOR SALE: 1970 chevy water truck, 1000 gal tank, 427 motor in it, air brake, needs a little carb work, runs and drives, asking \$2000 580-309-4365

FOR SALE: 8 wk old AKC registeredn mini daschunds, asking \$300, 2 males, 2 females, parents on premises, shots, wormed, vet checked 580-660-4050

FOR SALE: front load washing machines, LG brnd, work like new, asking \$200 and \$250 for the other, might deliver within reason can send pictures 580-309-2307 Dill City

FOR SALE: 2 baby bunnies; **FOR SALE:** baby boy accessories and clothes up to 6 months; **FOR SALE:** captains desk 580-515-0434

FOR SALE: iphone X case, brand new in box; **FOR SALE:** air purifying bag; **FOR SALE:** air humidifier filters can send pics 580-340-5986

FOR SALE: 2000 bushel grain, auger, no motor; Looking for used truck tires 22-5 or 24-5; **HIRING:** Taking apps for road service hands 580-821-1873

FOR SALE: commercial type air compressor, runs on 4 cyl john deere diesel engine, works good, runs call 580-339-1085 in Elk City

Looking for medium size tractor with interchangeable implements, (disabled vet with \$5000 budget)

FOR SALE: queen size pillow top mattress, box spring, frame, asking \$100 obo; **FOR SALE:** 2 blackjack donkeys call 580-483-6221

FOR SALE: 2 brand new ac window units; **FOR SALE:** small loading dock, can back a semi up to it; **FOR SALE:** forklift call 580-309-1649

FOR SALE: heavy duty 5 drawer desk, 72" wide, 32" deep. asking \$250 call 580-614-1328

FOR SALE: window unit A/c, 5000 btu, digital, asking \$50; **FOR SALE:** small chest type deep freeze, GE brand, 7 cubic ft, asking \$125

FOR SALE: new Mr. Heater portable 20k btu heater with 2 propane tanks, asking \$200 in sayre 580-928-7351








FOR SALE: 2006 equinox, runs and drives, no title, selling as junk car, asking \$200; @1601 Broadway in Elk City Looking to buy used privacy fence panels, (5x8 wooden or 6x8 wooden) 580-821-602.



**Listen to the Ag Weather
Forecast at 12:20PM
Mon.-Fri. on KECO 96.5FM**

KECO 96.5

LOCAL 7-DAY WEATHER FORECAST

THURSDAY	FRIDAY	SATURDAY	SUNDAY	MONDAY	TUESDAY	WEDNESDAY
						
Mostly Sunny Hi 73 Lo 46	Mostly Sunny Hi 86 Lo 47	Cloudy Hi 64 Lo 46	Mostly Sunny Hi 81 Lo 43	Mostly Cloudy Hi 68 Lo 38	Partly Cloudy Hi 69 Lo 50	Windy Hi 72 Lo 45

NM CUSTOM FENCING & WELDING

\$600 LABOR PER 1/4 MILE

Barbed Wire • Pipe Fence
Cattle Pens • Setting/Welding Corners
- Family Owned & Operated -

Nick Mackenna 580-210-6101

Farm Equipment

2000 JD 566 Round Baler, 10,960 bales, been thru JD shop, shedded, net and twine, great shape mechanically, Leedey, \$12,500, 580-821-4811. 2/16

Like brand new 8 ton Doyle MFG fertilizer and lime spreader with hyd spinners and engage, \$20,000, 580-574-5375. 4/17

JD 500 grain cart, excellent paint and tires, \$6,800, 580-445-8657.



Sub soiler plow, \$3,000, Ripper plow, \$3,000, tires in good condition, Texola area, 806-256-3781. 4/15

John Deere 4895 Swather, 2700 HRS, 18 FT sickle header with new sections/drives, steel conditioners, \$32,000, Sentinel, OKLA. 580-393-1301. 4/16

WANT TO BUY: John Deere tractors, running or not, 580-243-8610. 52/1

Wanted: Tractors dead or running, 2WD or 4WD, any kind, any size up to 2020 models, 405-641-7728. 26/26

WANTED: JD SQUARE BALERS, 348-346-336-224-214 any condition, 405-641-7728. 29/26

T&S trip feeder 1500# with tarp and controls no rust and works great. \$2000, please text me at 405-659-2677, Thxs 4/50

Oil/Minerals

BUYING MINERAL RIGHTS, Producing-Non Producing, 920-903-9611 or 405-535-7957, email: bobfleshman.bf@gmail.com. 12/24

HARBOR ENERGY

Do you have mineral rights that you would like to lease or sell? Call us today!

405-217-2715

www.texasgunandknifeshows.com

GUN SHOW

Like us on Facebook!

Amarillo Civic Center - July 16th & 17th

**Abilene Convention Center – May 21st & 22nd
Kerrville Happy State Bank Expo Hall – July 9th & 10th**

Sat. 9-5 & Sun. 10-4 - Dealers Call (830)285-0575



**Metal Buildings
Fabrication
Mobile Welding
Pipe Fence
Wrought Iron
Gates & Railing
Steel Frame Decks
Awnings • Carports**



**Lightning
Metal
LMB Buildings**

(580) 374-7299

Check us out @
lightningmetalbuildings.com

MCKINSEY MOTORS



Clinton, OK • 580-323-0258 • 800-725-0258

SPRING SUPER VALUE

\$95.95*



Semi-Synthetic Oil Change up to 5 qts.
Tire Rotation | Battery Service | Brake Inspection
Multi-Point Inspection | OFFER EXPIRES 6/30/2022

Valid only at McKinsey Motors. Up to 5 quarts of semi-synthetic blend oil. Most cars and light trucks. Price plus tax & applicable fees, some restrictions apply. Present coupon at time of write-up. Offer not valid on previous purchases and can not be combined with any other offers. See service advisor for details.



TREESOME Tree Trimmers

FREE ESTIMATES • FULLY INSURED

No job too big or too small!

- Family owned and operated -

**Give us a
call today!**

Joey Porter - 580-497-7273

Mindy Porter - 580-821-7030

POP & SONS INSULATION

WEATHERFORD, OKLAHOMA

- NEW OR EXISTING •
- RESIDENTIAL OR COMMERCIAL •
- FREE ESTIMATES • FULLY INSURED •

- Batts • Netting Spray in Walls
- Blow in Attic • Fireplaces

Polyeurofoam for Metal Buildings

Serving Oklahoma for over 40 Years

1-866-327-0958

580-774-5230 • 580-254-8393

M&D ENTERPRISES

**& LAWNMOWER
SHOPS**

580-886-2345

Canton ~ Seiling ~ Weatherford
Woodward* (*2 locations in Woodward)



Buy with confidence!
Full line dealer offering
the best in parts, service
and repair with highly
trained, certified
mechanics.



**U-HAUL
AUTHORIZED DEALER**

Chainsaws, Trimmers, Blowers, Edgers, Hedge Trimmers,
Power Washers & Generators.



**OutBuildingsOK.com
MowersOK.com**



**Gas Grills & Patio Furniture
Storm Shelters: & Saferooms**



**Portable Buildings, Insulated Well Houses &
Sheds, Carports & Garages**



Greenhouses Chicken Coops



**Hunting Blinds
Traeger & Green Mountain Pellet
Grills, Pellets & Accessories**



**Boss Buck
Feeders**


We Carry the Fence Supplies you need!



**Gates • T-Posts • Cement • H-Braces
Corner Posts • Continuous Fence**



580-995-4942 • US Hwy 34 & 60 • Vici, OK
www.EverettsWelding.com




**GET TRUCKS & TRAILERS
BACK ON THE ROAD**

"From bumper to mudflap, we repair everything above, below and in between." - Brody Rice



**YOUR GO-TO
DIESEL REPAIR SHOP**

Located between Elk City & Sayre,
2.5 miles north of the TA
Call 580-729-0386

STOCK MY POND

2 TRUCKS DELIVERING
FOR YOUR CONVENIENCE

Tues., April 19th

11-12 P.M. WEATHERFORD
Tractor Supply
1200 E. Eagle Dr.
580-772-2168

1-2 P.M. CLINTON
Little's Store
525 Orient Avenue
580-323-0267

4-5 P.M. MANGUM
4E Feed
425 E. Lincoln
580-782-3454

Wed., April 20th

8-9 A.M. SAYRE
CO-OP
109 S 6TH ST
580-928-2664

11-12 P.M. VICI
B-MART
620 N MAIN ST
580-995-3113

2-3 P.M. CANADIAN
Canadian Health & Vet
100 Hackberry Trail

4-5 P.M. PAMPA
Maul Feed
E. Fredrick Ave
806-665-5881

Thurs., April 21st

8-9A.M. AMARILLO
Robinsons Family Feed
7451 S Lakeside Dr.
806-373-9479

1 Acre Package

750 Bluegill
200 Bass
100 Crappie
10 lbs. Minnows
100 Redear
100 Hybrid Bluegill
300 4-6" Catfish
\$1,199 - Free Delivery


Without Catfish - \$1099

1/2 Acre Package

\$675
Without Catfish - \$625

4-6" Catfish: \$59/100
6-8" Catfish: \$79/100
8-11" Catfish: \$199/100

We Also Carry:
Large Mouth Bass
Crappie • Bluegill
Hybrid Bluegill
Sun Perch Minnows
Red Ear Bream



501-676-3768
www.stockmypond.com

Notices

Spring forward to new beginnings! Al-Anon meeting: Mondays at noon, Codependency/ACA meeting: Wednesdays at noon and Wednesdays 6-7 p.m., all at The Promise Center, corner of First and Main in Elk City, BYO lunch if desired, coffee provided, Everyone is invited, no charge! Call 580-339-2637, 580-339-6534, 580-472-3472. 52/9

Elk City AA, St. Matthews Church, 3001 E. 1100 Rd., Elk City, OK, Mon- Fri @12 pm, Southside Clubhouse, 105 Meadowridge Dr., Elk City, Ok, Mon- Sun @ 8pm. 52/4

A.A. Meeting, Thurs 7pm, Community of Christ, 201 E. Main St, Canton, Ok. 52/22

Dance and Potluck supper, every Friday 7-9:30, DAV in Elk City, 312 N. Eastern, Call 580-303-0359 for info.

Canute Cemetery association, meeting March 6 @7 pm, Terry Jordans barn 305 S. 8th st, Canute.

Clinton Al-Anon meets on Wednesday at noon and on Saturday at 9am at the Clinton United Methodist Church, these are open meetings. tfc

Canton AA/NA meetings: Thurs 7-8pm Baptist Church, 301 W. Poplar, Canton, OK, contact number 580-886-3439. tfc

A support group for bereaved parents, grandparents and siblings, The Compassionate Friends, meets the third Monday of each month at 7pm at The Farm Bureau community room, 2702 West Modelle in Clinton, for further information, email tcfwesternoklahoma@gmail.com. tfc

Cordell Recovery Group hosts NA meeting Fridays at 7pm AA meeting Tuesdays at 7pm located at 4th & College Church of Christ (middle door in alley behind building), Keith 580-660-5091. tfc

Weatherford AA meets Tuesday 5:30PM, Wednesday 12:00PM, Thursday 6:30PM, Friday 6:30PM, Saturday 9:00AM, at Weatherford food and resource center, use south entrance, 122 S 8th St, 580-614-1750.

Please donate your wedding gown to Angel Babies of Oklahoma to be used to make Angel Gowns for babies that do not get to leave the hospital. When completed the Angel Gowns are donated to the Oklahoma hospitals and then given to families that are facing the devastation of losing a child. Please contact: angelbabiesofoklahoma@hotmail.com. We can be reached on Facebook at: Angel Babies of Oklahoma. tfc

The Wear It Again Store & Warehouse are needing your donations of household goods, appliances, clothing, furniture and other sellable items. Contact Carlos at 580-323-3513. We will be happy to pick up your items free of charge! tfc

Weatherford Al-Anon meets Tuesdays at 8PM at Weatherford food and resource center, use south entrance, 122 S 8th St, 580-614-1750.

Elk City Al-Anon, friends & family of alcoholics, al-non.org, Mondays at noon, The Promise Center, 321 N Main St. Elk City, 580-339-2637

The Mission House Homeless Shelter is asking for donations of household goods, furniture, appliances, clothing and other sellable items. The Warehouse will pick up your donations, free of charge, by calling 580-323-3513 tfc

The Breast Cancer Support Group will meet the 2nd Monday of each month at 11am in the Conference Room of the Community Care Center at 609 West E Ave, for more information, call 580-339-2181

West Central Chapter of the National Federation of the Blind of Oklahoma. First Baptist Church, 900 W. Frisco St, Clinton, OK. West side entrance of church, 2nd Tuesday of each month at 6 pm, Avey Rico 580-547-4760 tfc

Stepmom S.O.S. (Support Group) at Prairie View Baptist Church of Elk City (at Highway 34S/I40 Junction, Carter/Mangum Exit) first Thursday of each month at 6:30 PM. For details call the church at 580-225-2844 or e-mail stachia12@hotmail.com. tfc

Www.menofcause.com. Bill Kern. Email: whkern@hotmail.com. tfc.

Garage Sales

Advertisers in the Penny News have reported good results. The cost is low -- as little as \$5.00. We have an estimated weekly readership of 70,000+.

Give us a call today!
1-800-675-1416
580-225-SELL (7355)



**BULLSEYE
PEST & TERMITE SERVICE**

(580) 225-7327 • 800-427-3439
"We Kill What Bugs You"



NEW ROOFING

Keep It Simple. Make It New.
ROOFING • SIDING • GUTTERING

FREE ESTIMATES!
FULLY INSURED
HABLAMOS ESPANOL



580-309-4323
newroofingok.com



Elk City Pools & Spas

Pools • Installations • Repairs • Maintenance • Accessories • Spas • Chemicals • Water Analysis • Decor • Toys & More

We are in the following locations each Wednesday:
Woodward, 9am-11am, Red Prairie Parking Lot
Perryton, Tx, 1pm-3pm, Old Hometown Shopco Parking Lot

580-225-4890
www.ElkCityPoolsAndSpas.com


SKUNKWERX FULL-SERVICE PAINT & BODY SHOP

580-928-5005
201 West Kennemer Sayre OK

★ PAINT & BODY ★

Collision Repair. All Makes & Models.
All Insurance Providers & Fleet Services
Windshield Replacement. Hail Damage.
Computer Color Matching.
Custom Paint For Your Vehicle or Motorcycle.
We Paint Motorcycle Parts! FREE ESTIMATES!

**ALEX EWBANK
WATER WELL DRILLING
4TH GENERATION
INDUSTRY PROVIDER
PUMP & GENERATOR RENTAL
OILFIELD
FARM
IRRIGATION
RESIDENTIAL
SUBMERSIBLE PUMPS
SOLAR PUMPS
ALEX EWBANK
OWNER/OPERATOR
PH. (580) 890-8009
WEATHERFORD, OKLAHOMA**



VETERAN DISCOUNT

**BARNES
FEED SERVICE**
726-2120
HOBART, OKLA.

ALL OUR FEEDS INCLUDE THE BEST VITAMIN/MINERAL PRE-MIX AVAILABLE

**CREEP • GROWER
STARTER • SHOW**



**2 ton
HEAVYBILT
Feed Buggy**

**Home of the
Black Trip
Hopper Feeders**



Call for Special Pricing! 580-726-2120

FINANCING NOW AVAILABLE

**METAL ROOFING
SHINGLES
FLAT ROOFS
SIDING
PAINTING
SEAMLESS
GUTTERING**

CALL FOR DETAILS
580-530-0033

**ROOF NOW
PAY LATER**



MCABEE FOX ROOFING LLC

Commercially Endorsed • Free Estimates • Fully Insured OK LIC#80002994

PREFERRED CONTRACTOR

SHEEP & GOAT AUCTION

TAKING CONSIGNMENTS FOR
NEXT SALE May 7th at 11AM

MARKET REPORT 4/2/22

Type	Kind	Type	Avg Wt	Price Range	Avg Price
EWE	SHEEP	WT	52	\$120.00-\$450.00	\$303.99
EWE	SHEEP	WT	80	\$135.00-\$250.00	\$204.00
EWE	SHEEP	WT	111	\$135.00-\$155.00	\$142.00
EWE	SHEEP	WT	137	\$150.00-\$200.00	\$183.33
EWE	SHEEP	WT	190	\$130.00-\$145.00	\$142.86
EWE	SHEEP	HD	104	\$40.00-\$335.00	\$156.06
EWE	SHEEP	HD	200	\$200.00-\$200.00	\$200.00
EWE	HAIRS	WT	39	\$275.00-\$322.50	\$316.82
EWE	HAIRS	WT	83	\$165.00-\$320.00	\$295.42
EWE	HAIRS	WT	110	\$100.00-\$280.00	\$184.12
EWE	HAIRS	WT	130	\$140.00-\$200.00	\$147.86
EWE	HAIRS	WT	161	\$130.00-\$130.00	\$130.00
EWE	HAIRS	HD	28	\$75.00-\$275.00	\$215.63
RAM	SHEEP	WT	52	\$265.00-\$340.00	\$298.92
RAM	SPEEP	WT	104	\$165.00-\$320.00	\$268.27
RAM	SHEEP	WT	221	\$105.00-\$220.00	\$170.00
RAM	SHEEP	HD	22	\$40.00-\$775.00	238.00
RAM	SPEEP	HD	100	\$155.00-\$155.00	\$155.00
RAM	SHEEP	HD	155	\$200.00-\$200.00	\$200.00
RAM	HAIRS	WT	21	\$315.00-\$325.00	\$317.50
RAM	HAIRS	WT	123	\$120.00-\$250.00	\$176.00
RAM	HAIRS	HD	85	\$110.00-\$110.00	\$110.00
LAMB	SHEEP	WT	49	\$275.00-\$335.00	\$320.46
LAMB	SHEEP	WT	95	\$105.00-\$307.50	\$182.69
LAMB	SHEEP	WT	174	\$125.00-\$200.00	\$176.67
LAMB	SHEEP	HD	39	\$45.00-\$325.00	\$205.50
LAMB	SHEEP	HD	110	\$200.00-\$200.00	\$200.00
LAMB	SHEEP	HD	165	\$200.00-\$200.00	\$200.00
LAMB	HAIRS	WT	50	\$210.00-\$420.00	\$331.71
LAMB	HAIRS	WT	97	\$135.00-\$300.00	\$165.67
LAMB	HAIRS	WT	198	\$320.00-\$320.00	\$320.00
LAMB	HAIRS	HD	8	\$20.00-\$55.00	\$37.50
LAMB	HAIRS	HD	89	\$125.00-\$125.00	\$125.00
NANNY	GOAT	WT	51	\$150.00-\$405.00	\$325.65
NANNY	GOAT	WT	91	\$135.00-\$300.00	\$171.25
NANNY	GOAT	WT	110	\$125.00-\$350.00	\$202.08
NANNY	GOAT	WT	138	\$165.00-\$180.00	\$171.00
NANNY	GOAT	WT	175	\$150.00-\$402.00	\$200.40
NANNY	GOAT	HD	64	\$50.00-\$420.00	\$353.74
NANNY	GOAT	HD	225	\$45.00-\$45.00	\$45.00
BILLY	GOAT	WT	47	\$230.00-\$440.00	\$382.21
BILLY	GOAT	WT	102	\$175.00-\$400.00	\$238.64
BILLY	GOAT	WT	164	\$210.00-\$300.00	\$236.25
BILLY	GOAT	HD	11	\$60.00-\$300.00	\$163.75
BILLY	GOAT	HD	113	\$150.00-\$375.00	\$265.83
BILLY	GOAT	HD	257	\$175.00-\$475.00	\$233.33
KID	GOAT	WT	29	\$160.00-\$435.00	\$384.86
KID	GOAT	WT	97	\$110.00-\$310.00	\$272.50
KID	GOAT	HD	190	\$60.00-\$60.00	\$60.00

HOBART STOCKYARDS
Hwy. 183 North, Hobart, OK
Locally Owned - Office 580-726-3306

Where we want your business and we do appreciate it!

ALL KINDS OF ROOFING • SHINGLES • ASPHALT • METAL ROOFING



INSURED • SERVING WESTERN OKLAHOMA FOR 30+ YEARS



"My wife and I were amazed at the workmanship, detail and cleanup that Doug's crew displayed while re-roofing our home. We highly recommend Modern Construction!"

— Radio Personality Shawn Wilson

MODERN CONSTRUCTION
ROOFING

580-225-6812 Elk City, Oklahoma
OKREG 80000878

Cattle



Registered Red Angus and **Black Angus Bulls** for Sale Age advantaged 18-24 month old bulls. Fertility tested, vaccinated, wormed and ready to go to work. 580-352-1985 or 580-450-4708 4/18

REGISTERED RED ANGUS YEARLING BULLS FOR SALE VET TESTED READY TO GO 580-445-5845. 8/22

Commercial Angus bulls, sons of the top EPD bulls in the Angus breed, low birth weight, tremendous weaning and yearling weight growth, fertility tested, wormed and shots up to date, Seyler/Roach Angus Cattle, Call Sandy 580-614-1150, Greenfield, OK 6/20

Holder Land and Cattle LLC - 2-year-old Angus bulls, contact Brent at 580-471-5842 or Mark at 580-471-7395. 4/18

3-17 month old Angus bulls, \$2,000, Call 580-334-1970. Laverne, Ok 1/15

15- 4-6 year old black **angus uniform and gentle** set of heavy bred cows, 580-729-2299. 2/16

Sim and SIm Angus bulls, 14-18 mo old, Baldies and solid black, calving ease, good disposition, nice set of bulls, fertility tested and all shots, 405-542-7842. 8/21

2-year-old Black Semi and **Red Angus** bulls for sale, Manske Semintol, 580-334-5613. 4/17

For Sale: Jersey/Red **Angus** heifer bull, 405-612-7277 4/17

2-year-old Charolais/Red **Angus** bulls for sale, 405-747-8734. 4/17



Sim Angus Bulls, 18mo-2yr old, Forage developed tested, and ready for service, Chet Purvine, 580-623-3693, call/text, www.purvine-farms.com 4/17

We buy crippled cows and bulls at your farm, 580-339-4362. 4/17

ALLEE CATTLE CO. reg. two year old Angus bulls for sale, non-creep fed, raised on native pasture, ready to go to work, Hammon, Ok, 580-339-1919. 8/20

20 Fancy heifer pairs, \$2,200, 580-497-7466. **Black and Red Angus** bulls for sale, 14-18 mos. old, \$2,250, located in Covington, call Chuck at 405-368-1950. 4/16

Black Limousin/Angus bulls, 23 month old, grandsons of National Lim/Flex champion, stout, fertility tested, vaccinated and wormed, \$2,500, El Reno, 405-219-9101. 4/16



BULLS FOR SALE, Gelbvieh & Balancer (Angus x Gelbvieh), black or red, gentle, tested, pollockcattle.com, 580-922-5629. 4/15

60 black 3&4-yr-old heavy bred cows, nice replacements, cows weigh 1285#, 580-774-8445. 4/15

12 excellent red Angus cows, 3-5 years, heavy bred, 580-774-8445. 4/15

20 black pairs, 3-5 years, nice calves, 580-774-8445. 4/15

20 black 3 & 4-year-olds, excellent pairs, cows weigh 1285#, 580-774-8445. 4/15

Red Angus heifers guaranteed open in Watonga, will be on wheat through graze out, Allen Cowan 478-919-5658. 8/19

Charolais bulls for sale, 580-995-3190 or 580-821-4984. 4/15
15 HEREFORD BULLS, gentle, 2-yr olds and yearlings. **HORNED&-POLLED** 580-747-5605, VICI. 8/18

BULLS

Registered Angus bulls, 18-23 mo., all shots, easy calvers, tame, guaranteed calves, \$1,995, El Reno, 405-823-5057. 8/18

Mark your calendar, 4 Brands Alliance Hereford Sale, April 30, 2022 at Foss, Ok, 40 big stout 2 year old bulls, 50 outstanding females with calves, Call 580-661-1146 for any info or to request a catalog. 5/15

1/2 black Angus/1/2 black Limousin bulls, good disposition, guaranteed fertility, 2 years and younger, Tim Kilhoffer, 580-515-9894. 24/34

Black, polled Limousin bulls, good disposition, guaranteed fertility, 2 years and younger, Tim Kilhoffer, 580-515-9894. 24/34

50 first calve Black Angus heifer pairs, Finks genetics, home raised, Frymire Farms, 580-303-8663. 16/24

Selling Grass Fed, grass finished quarters of beef, processed and freezer ready, order now for summer delivery, Stacey Greb 580-678-0662. 12/19

Black Balancer and Angus bulls for sale, bulls are 14-16 mo., all polled and current on shots, lbw and high yearling weights, out of excellent genetics, Frymire Farms, 580-303-8663. 16/22

(Continued on Pg 10)

Country Dove Gifts & Tea Room



DINING ROOM IS OPEN 11AM-2PM!

Carryout Available.

Store is open 9am-5:30 pm - Monday-Saturday

To Go orders welcome - 580-225-7028

610 W. Third - Elk City, OK

THE PERFECT GIFT
FOR YOUR FAVORITE
GOLFER

play more than 278 facilities
across seven states
average savings of \$18/round



Only
\$49.95
for 1 Year
plus tax and S&H

Membership benefits include:

- TWICE as many courses in MORE states than other golf passes
- HUGE savings all year long
- Play private courses
- Complementary green fee offers
- Pays for itself after only two uses

"Passport is the greatest deal in golf today!"

- Cheryl Duff, Hobart, OK

"I use my passport all year long. FANTASTIC DEAL!"

- Dick Dugan, Oklahoma City, OK

Oklahoma Arkansas Kansas Missouri Illinois Texas New Mexico

405-949-0011 thegolfpassport.com

Drs. Mori & Teri White, DDS

Sedation Dentistry Calms Fears...
Take a *pill* and *snooze* through your dental appointment.

For many Americans, going to the dentist is a frightful event. If you are one of the 145 million people who avoid the dentist due to fear, we have the solution... Sedation Dentistry.

You can now experience your dental appointment through a totally relaxed and comfortable environment. With the help of Sedation Dentistry, you will wake up to find that your dental appointment is over and the restorations have been completed painlessly.

For those with a busy schedule, we can accomplish more dentistry in one appointment which means fewer visits to the dentist.

Sedation Dentistry is available for everything from simple restoration to the most complex procedures. We are very sensitive to our patients needs, especially those with high fear and apprehension. Now we can put an end to anxiety with this safe and wonderful technique of sedation.

We are proud to be able to offer Sedation Dentistry and offer hope to those who have been avoiding the dentist due to fear. If you would like to know more, call our team with your questions.

Drs. Mori & Teri White
practice cosmetic, implant
and family dentistry at
2802 8th Street,
Woodward, OK 73801

Telephone 580-256-4301

See our website at www.woodwarddentist.com

WHITE DENTAL CARE

Sedation

Storage Containers

Custom Door & Window Installation



Larry White
580-995-4985

CREDIT CARDS NOW ACCEPTED

SOD BY SHERRY

Your Total Quality Oklahoma
Sod Source for 39 Years and Rolling!

Astro Bermuda Grass \$260

TAHOMA 31™ \$360
BERMUDAGRASS

Justice Fescue \$420

Coverage: 500 sq. ft. per pallet

Order Online Installation Available

www.sodbysherry.com

405-354-7926

Cattle

(Continued from Pg 9)

Fence Charger Repair- All brands, quick turnaround, reasonable rates, serving Oklahoma, Texas and Arkansas. Pioneer Electronics 580-603-0063 SE of Enid, OK. 12/17

FUCHS polled Hereford bulls tested and ready to go to work \$2,000 Sweetwater, OK, 580-729-0251. 15/20

Simm-Angus bulls for sale, Kelley Gwartney, 580-497-7303. 24/27

Purebred Limousin Bulls - large selection of quality black and polled service age bulls, low birth weight, high weaning weight, good EPDs and disposition, breeding black and polled Limousin since 1974, Begert Limousin Ranch, Allison, TX, 806-375-2346. 24/22

50 first calve Black Angus heifer pairs, Finks genetics, home raised, Frymire Farms, 580-303-8663. 21/17

KERN HAY & CATTLE

- 15 Pairs 5 to 9 Years Old
- 16 Heifer Pairs
All calves weigh 400-500 lbs.
Have been with bulls since Jan. 17th
- 45 Spring Calf Pairs
Cows 4 to 9 years old.
Calves are 2 months or less.

**Call Bill Kern
580-660-1622**

4/16

Services

Affordable Lawn Service, mowing, trimming and edging, Elk City and surrounding area Call for free estimates, 580-821-1687 Mike. 4/18

Looking for someone to handle your dirt work needs? Look no further! Contact Sandbar Enterprises LLC for a free quote today! 200+ HP Dozer and Excavator with a hydraulic thumb gives us the ability to handle your: general dirt work, land clearing, pond creation and clean-out, terrace building and maintenance, fence row removal, house/office/shop pads, demolition, and much more! Located in Kingfisher, OK, contact Info, Tyler Peters: 580-212-8250, Beau Kloeppel: 405-420-6054. 8/21



C&C Construction is a full line Construction company, we offer a wide variety of services and offer turn key metal buildings and barn houses, fully insured and references are available, free quotes call today, 580-706-1464. 4/17



Call Air Tek today and setup an appoint for your air conditioner pre-season maintenance. We clean your outdoor unit, check refrigerant and electrical components. \$70 Offer ends May 31 (580)225-3993 License OK 060824 8/21



For the best detail in town come by or call us for all your detail & accessory needs, 580-799-7886. 4/16

Wade Dump Trucking, sand, dirt and gravel delivery, 580-799-2652. 24/36

IPR (Phone Repair) carrying all Iphone screens 6-12 pro, back glass repair 8-12 pro max, and casper screen protectors, call or text for quote 405-638-1427, located in Elk City. 4/16

AC Demo, tree removal and dirt work, 580-214-0303. 4/54

NOTICE

Fill Sand • Fill Dirt • Rock
General Hauling
- 10-Wheel Dumptruck -

BEAUCHAMP TRUCKING
Call for Appt - 580-323-1704
580-214-0076 - 580-309-0776

INTEGRITY PAINTING AND REMODELING

INDOOR & OUTDOOR
Carpentry, handyman, siding, windows and doors

**FREE ESTIMATES
580-751-0114**

52/52

Seed

Cowpea, Millet, and Mungbean, contracts available at Apache Seed and Supply, Apache, OK, 580-588-3606 or cell 940-781-1087, lic#08011270. 4/18

Butchering



The Butcher Block Custom Meat Processing in Canute, Oklahoma has processing dates available for May and June. Call today to get on the books. 580-339-1937. 5/18

Classic Vehicles



Classic 1954 Buick Super 2door HT, restored in 1995, runs and operates, all original, \$17,500, 580-682-0777, Hobart OK 4/15



Quality Service

Quality Products

Specializing in Starters & Alternators

ELECTRIC FENCE CHARGER

50 Mile Range



DUAL VOLTAGE PLUG-IN MODELS

50 mile range
120 mile range
160 mile range

11065 State Hwy 58, Hydro, OK 73048

Chet Bender - 405-952-4112

bendersrepair@gmail.com



COMPLETE GRAIN STORAGE SOLUTIONS



SAVE NOW with WINTER DISCOUNTS



YOUR LOCAL AUTHORIZED SUPERIOR DEALER

10 MILES SOUTH OF WEATHERFORD ON HWY 54



Pete: 580.819.2448

MACK FORD WELDING

Custom Built Metal Buildings & Carports



580-383-8676

CLINTON, OK

APACHE HAY WAGON



Eliminate 90% hay waste with the Apache Hay Wagon



580-995-4942 | US Hwy 34 & 60 • Vici, OK

WWW.EVERETTSWELDING.COM

TURBO DIESEL OF OKLAHOMA

Diesel Engine Parts

FOR TRUCKS, AG, INDUSTRIAL & AUTO

Overhaul kits • Turbos • Fan Clutches • Full Tilt Manifolds •

Injectors • Pumps (OEM & Aftermarket available)

(800)366-4265

www.turbodieselok.com

8628 W Reno • Oklahoma City, OK 73127

We Stock Wheels for Wilson Corrals



Call Today!
405.942.7878

Commercial, Residential, Recreational, Retail
Design Services available to your specific building



Established in 2005, Gideon Steel Panel Company celebrates being in business for over 15 years!

Thank you Oklahoma for your continued support. We are committed to serving you with high performance steel products and exceeding customer service expectations!

www.GideonSteel.com

Schmidt Services LLC

We build 24-30 Ton Overhead Feed Bins.
(Discount if you have your own tank)



ONLY \$4,700
for complete set-up.

580-497-7466

GOBER Post Frame Buildings

Shops, Garages, Houses, Agriculture, Commercial

1-405-595-0770

30'x40'x10' - \$20,400	With 4" Concrete, Fully Insulated, 1 Commercial Overhead, 1 Entry Door, #1 29 Ga. 40 yr. Painted Metal, Built on Your Level Site, Additional Sizes Available Mileage or Higher Concrete Prices May Apply
30'x40'x12' - \$22,600	
30'x50'x10' - \$24,600	
30'x50'x12' - \$26,700	
Protect Your Home And Property!!! Make Sure Your Contractor is Following The Law. Ask For General Liability and Workers Comp. Insurance www.goberconstruction.com	

Brock Whitson

Solar & Windmill Service,
Drilling & Pump Installation



Call Today to schedule appointment
Brock@whitsonwaterwell.com
580-613-0015
 23822 E 900 Rd, Thomas OK
Fully Licensed and Insured. 13 Yrs Experience!

Most Competitive Price on Farm Fuel



Most competitive price in the area
 Filtering to 10 micron for cleaner fuel
 Outstanding service
 * Free delivery within 50 miles for
 minimum 500 gallon order

Call 580-339-8111



Flo Fuel 100 S. Monroe, Suite 17 - Elk City, OK

Hunting

For rent: hunting/fishing, vacation cabin, Ft. Cobb lake, right next to water, call/text, 580-243-8697. 24/17

Events

Sunset Riders (band) will play at the American Legion Post 41 at 1705 S. US 183, Clinton, OK, the 4th Friday of every month, 6:30PM-9:30PM, all ages welcome. Come enjoy live music and dance, alcohol and tobacco free. 4/15

Lawn & Garden

2021 Bad Boy Riding Mower 42" deck. Barely used. \$2,700.00 Call: 405-742-8044 4/17

1985 318 JD Lawn tractor, hydraulics work power string, nice mower, \$1,500, 405-313-1671.

JD's Small Engine Repair, lawnmowers, weed eaters, chainsaws, Hobart, OK, 580-450-0991.

Oil/Minerals

BUYING MINERAL RIGHTS, Producing-Non Producing, 920-903-9611 or 405-535-7957, email: bobfleshman.bf@gmail.com. 12/24

HARBOR ENERGY

Do you have mineral rights that you would like to lease or sell? Call us today!
405-217-2715

Automobiles

2006 2 door jeep, 2003 Holiday Rambler diesel pusher, 580-383-7777. 4/17

2011 Hyundai Accent, good gas mileage, \$4,500, 580-318-7221. 4/16

2019 Ford Edge Titanium, loaded, 33,000 miles, older female owner, garage kept, \$32,000, text 580-309-1389. 4/15

1995 F250 XL, brown, 2-door, 5 spd trans., spike bed, engine overhauled 45,000 miles ago, \$4,250 obo, Hennessey OK, 580-334-2612. 4/15

Top Dollar Paid for unwanted vehicles, no title no problem free towing Altus's and Lawton areas. Call Doug 580-483-5985. 13/22

We accept



Penny News
 580-225-7355
 1-800-675-1416
 220 S. Pioneer Rd.
 Elk City, OK



Barbwire & Lace

Refurbished Furniture • Home Decoration • Yard Art
 3109 W. 20th St., Elk City, OK • 580-303-0674

COLE SPECIALTY SERVICES



PASTURE MULCHING - BRUSH AND CEDAR TREE REMOVAL

CUSTOM SWATHING AND HAY BALING

CUSTOM BEEF FEEDING AND PROCESSING

DIRT/GRAVEL WORK

GENERAL SKIDSTEER WORK

KOBY & ROWDY COLE

ELK CITY, OK
 580-821-2355
KOBY.COLE@YAHOO.COM

M Metal Mart

THE RIGHT MATERIALS FOR THE RIGHT PRICE!

Whether your project is large or small, WE APPRECIATE YOUR BUSINESS!

STEEL ROOFING Residential & Commercial	METAL BUILDINGS Prefabricated & Weld-up Buildings	ROLL-UP DOORS & Walk Doors	INSULATION Vinyl Back & Reflective
PANELS MAX-RIB "R"-PANEL	CARPORTS 	CUSTOM TRIM Fabricated on-site	TOOLS Blades & Hex Drivers
SKY LIGHTS Polycarbonate Skylight Panels	RIDGE VENTS 	RECEIVER CHANNEL Square Tubing	PANEL CLOSURES Universal & Vent Closures

METALMARTS.COM

NEW LOCATION: 10280 I-27 in Amarillo, TX • 1-800-677-2519 • 1-806-622-2230

Alliance Inc.

NOW HIRING

- MECHANIC
- CLASS A CDL

WITH TANKER ENDORSEMENT

Cordell Area

Competitive Pay / Family Health Insurance/Paid Vacation/Retirement

Full Time Drivers Needed

NOW OFFERING SIGN ON BONUSES!

580-832-5558 OR
HR@ALLIANCEINCORPORATED.COM

ALLIANCE INC,
22188 HWY 152, CORDELL, OK 73632



NOW HIRING:

CLASS A CDL DRIVERS

COME JOIN OUR TEAM!

Competitive Pay • Paid Overtime

Medical Benefits • Retirement Matching Plan

APPLY ONLINE
at www.sioxerosioncontrol.com
or **IN PERSON** at
2818 Frontage Rd, Weatherford, OK 73096

For more information call 580-772-0230



EROSION CONTROL

Help Wanted




Looking for full time dependable individuals for a fast pace detail operation., experience a plus but not required, pay based on experience, apply in person at 405 E 3 rd st Elk City. 4/18

Labor Hand Needed: Looking for able-bodied person to help with home/yard honey-dos/painting, etc. \$10.00/Hour/Cash. Weatherford area. Chuck 405-648-2761 Call/Text. 2/16

Work From Home Opportunities We need a few good people to get licenses as agents/brokers in the investment/insurance field, paid licenses and training! No Felonies. No experience required! Call 501- 786-8569 for more information. 4/17

Town of Vici Nursing Home is currently accepting applications for Dietary, Housekeeping and LPN Position. We offer benefits, flexibility in scheduling, and a team approach to care. Call 580-995-4216 to discuss the possibilities. 4/17



Great Plains Kubota

Great Plains Kubota in Cordell is seeking an experienced mechanic. Must have diesel and gas engine, hydraulic, electrical and A/C experience, very competitive pay and benefit package, for more information contact HR Director at 405-567-9413 leave message if no answer. 4/16

Farm mechanic needed, salary varies with experience, 580-682-0777, Hobart, OK. 4/16

We are looking to hire a full-time automotive mechanic to repair cars, trucks, and medium duty vehicles in Canute, OK. This mechanic position earns a base rate of \$15.00-\$20.00 per hour depending on knowledge and experience. Must have valid Drivers License, no felonies, and must be able to pass a drug test. If you are interested call Justin at 580-472-3292.

Class A CDL , 6 months experiences, good job with great benefits, text name and number and we will contact you. 580-318-1512. 4/15

Tom's Services

Taking applications for fencing laborers.

Must be reliable and have transportation to work.

Must be able to travel and stay away from home during the week.

Pay is determined on amount of experience.

Apply in person at 19642 RT 66 Elk City OK

For more information 580-309-0204 or 580-821-1830

Hunting

For rent: hunting/fishing, vacation cabin, Ft. Cobb lake, right next to water, call/text, 580-243-8697. 24/17

Garage/Estate Sale

MOVING SALE North of Woodward - 2 miles on Hwy 412, 270 & 3, then left on CR38.. Vintage, antiques, possible farmhouse decor, 2 saddles, western tac, oversized recliner, lots of misc. Sale every weekend til gone. 2/16

1001 Madison Bessie, Ok, Cowboy and indigenous art-reproductions, carved headboard, artsy knick knacks, horse tack, saddle stands, April 14th, 10am-5pm, April 15th 9am-5, April 16th, 9am-12pm, Kenna, 303-507-4424. 1/15

BIG RED BARN SALE, Open Friday and Saturday, 9:30 to 5:00, Sunday, 1:00 to 5:00, we have everything from, household goods to antiques! If you like flea market stuff you will love us, Check out our Facebook page "Big Red Barn Sale" and watch our Thursday evening video, Directions : From hwy 6 & hwy 152 south of Elk City. Go 3 miles south on hwy 6. 3 miles east on Rd 1220. 1/4 south. Big red and white barn. 580-450-0658.

BOSCH • STANADYNE
• DELPHI • DENSO • AMBAC

Campbell's Diesel Service

Authorized Diesel Injection Service

EXCHANGE & REPAIR

DIESEL PUMPS & INJECTORS

Travis Hoover, Owner

580-347-2466

144 N. 3rd • Mountain View, OK



24/7 Mobile Diesel Services

- DOT Inspections
- Engine Repair
- Road Calls
- Services & More

Located 3 miles East of Mooreland

CALL DANNY FOR DIESEL REPAIR

432.488.9554

STEEL CONSTRUCTION • CONCRETE • STORM DAMAGE




Stan Fitzjarrell **Josh Fitzjarrell**
580-445-0473 **580-445-0724**

email: sjfitz@yahoo.com
facebook: [facebook.com/sjfitzjarrell](https://www.facebook.com/sjfitzjarrell)

METAL OR WOOD CONSTRUCTION

CATTLE SHADES • SHOPS • BARNS • CARPORTS

SPECIAL PRICING EVERY SATURDAY

20% OFF EVERYTHING IN STOCK
Does Not Include Lumber Clearance Items, Smart Siding and Shingles

4" PVC PIPE 20'
\$102
W/ BALES

3/4" PVC PIPE \$11.49

INDUSTRIAL FANS (NOLIGHTS)

30% OFF

LIGHTS
DOME, CAN + MANY MORE VARIETIES

30% OFF

ATTIC BLOW INSULATION \$11.49/BAG

RIGID DIAMOND HOLE SAW BITS
STARTING AT **\$4.03**

VALUE MART SURPLUS LLC
120 MAIN ST. WOODWARD OK
(580) 334-7169



SOCIAL SECURITY DISABILITY BENEFITS

REPRESENTATION
AT ALL LEVELS FOR CHILDREN & ADULTS

OWEN/PARVIN & ASSOCIATES, INC

580-237-3705

NO RECOVERY • NO FEES

www.owenparvin.com

Oklahoma Housing LLC

Mobile Homes
Weatherford/Hydro OK

Buy, SELL, Trade

405-808-2556

LISTINGS NEEDED!

We specialize in farm, ranch, & recreational property throughout the Texas Panhandle. Call us today and let us share our expertise in marketing your property.



WHITAKER REAL ESTATE
FARM & RANCH PROPERTY

Lewis Whitaker, Broker
Lee Whitaker, Broker

4600 I-40 West Suite 101
Amarillo, Texas 79106

Office 806-356-6100 • Fax 806-356-6517
www.whitakerrealestate.com



Misty Gossen
Your Local Agent
2004 W Gary BLVD, CLINTON OK 73601
MGOSSEN@FARMERSAGENT.COM
https://agents.farmers.com/mgossen

MORE OPTIONS MORE DISCOUNTS

- Automobile insurance
- Home insurance
- Life insurance

Call 580-323-8444 today!

Let me help you get the most value out of your insurance coverage.



- IN BUSINESS OVER 50 YEARS -

IC's Trailer Sales

NEW & USED TRAILERS - ALL SIZES



Stock Trailers — 14 ft. to 32 ft.

OILFIELD TOOL TRAILERS AVAILABLE!

CARGO TRAILERS
20x8 WW
2/5200-lb. axles
24x8 WW
2/6000-lb. axles
24x8 WW
2/7000-lb. axles



CARGO • FLOATS • UTILITY




HORSE & STOCK TRAILERS

580-225-3118
CELL: 580-243-8255 Jerry • 580-821-4996 Kimberly
1 mile west of United • Elk City, Oklahoma

JD Tractor Repair

Certified John Deere Technicians

Specializing in John Deere Tractors



**Full Service Repair
On Site Service Calls**

Jeff Hall, 580-821-0399
Tractor Repair David Tucker, 580-799-2726
¾ Mile S. of Canute 4-way Stop • 580-472-3322



ProBox Portable Storage

405-388-9700

BUY or RENT
20' and 40'
CONTAINERS

Sleek Storage - New, Well Maintained Inventory
Super Strong - 16 gauge Corrugated Steel
Seriously Secure - Proprietary Vault Locking System

ProBoxPortableStorage.com
YOUR STUFF IS TOO IMPORTANT FOR ANYTHING LESS!

Auto Parts



AMSOIL products for sale! Synthetic oils for cars, pickup trucks, farm equipment, Semis, boats, ATV/UTV, lawn equipment, and fire-arms. Save \$\$\$ as a Preferred Customer. Contact Todd, your Independent AMSOIL Dealer. Call/text 806-601-0124 (no answer, leave a message, please) or visit www.lonestarsynthetics.com 8/22

Pickup beds: 2008 Dodge, 1991 Chevy, excellent condition, 580-548-4651, 580-515-8030. 4/17

CHICKASHA SWAP MEET

Spring 2022 May 12, 13, 14
Rain or Shine Outside Event

For info Call: 405-224-6552
Chickashaautoswapmeet.com
712 East Choctaw, Chickasha, OK

May 12, 13, 14 - 2022
Swap Meet hours: WEEK OF THE SWAP MEET
The Swap Meet grounds opens to the public at 1PM on Wednesday, it does not "close" until Saturday at 4PM. Registration trailer hours: (to purchase spaces) Wednesday 1PM-6PM. Thursday 7:30AM-6PM, Friday 7:30AM-6PM, Saturday, 7:30AM-4PM, antiques, classics, hot rods, custom make and models, Mopar muscle cars, Pony cars, , modern vehicles, special interests, parts, accessories, auto literature, memorabilia, cars, trucks, signs, tires, AUTO RELATED ITEMS, To be a vendor at the Chickasha Swap Meet at least 80% of what occupies the space(s) you rent MUST be AUTO RELATED. Please call or text 405-224-6552 with any further questions. 4/17

Rebuilt GM 700 R4 transmission with converter and warranty, \$550 with same exchange, 405-872-8387. 4/16

Rebuilt GM turbo 350 transmission with converter and warranty, \$450 with same exchange, 405-872-8387. 4/16

Rebuilt GM turbo 400 transmission with converter and warranty, \$450 with same exchange, 405-872-8387. 4/16

Rebuilt Ford C4 or C6 and Dodge 727 or 904 transmission with converter and warranty, \$325 with same exchange, 405-872-8387. 4/16

Ranch hand grill guard, for late model Chevy GMC pickup, 580-774-8445. 4/16

Classic car tires, 2 new Coker wide white wall, 650x 16 radio, \$500, 806-570-0038. 4/15

Want to Buy

Will buy furniture and decor in Hobart and surrounding area. Also old marbles and buttons and sterling/turquoise jewelry and 40's-50's costume rhinestone jewelry. Call 580-682-0232. 4/18

Wanted- Sports Card Collections. Text or call 580-450-5714. 8/21



Looking to Buy: Dozers, wheel loaders, backhoes, skid steers, tractors, forklifts, semi trucks and trailers, old or new, Michael 806-994-0523. 12/23

Electric Kiln for pottery, high fire, and accessories, 806-323-2919. 4/15

Wanted: amc project car amx Javelin Rambler rogue sc/rambler 70 rebel or rebel machine, 580-583-4131. 12/18

Coin and currency collections, 580-243-8610. 52/1

Top dollar paid for gas station collectibles. Looking for signs, gas pumps, air meters etc. Any type of old sign considered. Call or text 405-808-8948. 24/16

Firewood

BR Fence Co., barbed wire , cattle gaurds, pasture tree cutting, corrals, chain link, split rail, 580-210-9533. 24/36

Oak, Mesquite, Pecan, Walnut, Hickory delivery available, 580-471-6230, 580-706-0693. tfe

Roofing



Pizano Construction for roof repairs & replacements, floors, windows & cabinet installations! All your construction needs ! Free estimates 405-664-4014. 8/16

MCKINSEY

Clinton, OK
580-323-0258
800-725-0258




WE DELIVER!

FROM OUR FLOOR
TO YOUR DOOR!

Buy Online - Email - Chat
Phone - Text & We will
Deliver your New or Used
Vehicle to your Door!

IT'S THAT EASY!



2017 FORD F350



WORK READY!
\$35,488

SD, 4x4, XLT, All Power, Local Trade, Custom Welding Bed

2018 FORD EDGE



SUPER CLEAN!
\$31,445

Titanium, 1-Owner, Low Miles, Loaded with Extras

2015 FORD F150



SHARP TRUCK!
\$34,777

Crew, 4x4, Lariat, Ultimate Pkg, Local Trade

2020 GMC CANYON



WON'T LAST!
\$37,720

Crew, 4x4, 1-Owner, Low Miles, Loaded with Extras

WE PAY CASH FOR CARS ON THE SPOT!
Any Make or Model!
580-323-0259

Good used cars are in High Demand right now. We are looking to pay TOP DOLLAR for yours even if you don't buy ours!

2014 GMC 1500



LOTS OF EXTRAS!
\$29,740

Crew, 4x4, SLE, Local Trade, Low Miles, Loaded!

2015 FORD F250



HURRY IN!
\$54,470

Crew, 4x4, Lariat, Power Stroke, 1-Owner, Leather, Cannon Ball Bed

2014 CHEVY 1500



SUPER SHARP!
\$33,780

Crew, 4x4, LT, Leather, Lift Kit, Custom Wheels & More

2014 FORD F350



HURRY IN!
\$37,810

Crew, 4X4 XLT, Power Stroke, Extras, Hay Bed and More!

2019 CHEVY 1500



WON'T LAST!
\$30,400

4x4, LT, 5.3 V8, All Power, Lots of Extras!

WWW.MCKINSEYMOTORS.COM

North Texas Auction Tx. Lic#17054
CECIL JOHNSON FARM & RANCH
ESTATE AUCTION

SATURDAY, APRIL 23RD 2022 @ 10:00 AM
 829 FM 2131, Colman, Texas— watch for the signs


NORTH TEXAS AUCTIONS Lic.# 17054
 Derek Wootton 580.660.6179
 Todd Washington 806.269.7800
 www.northtexasauction.com
 * Preview week of sale

Live ONSITE & ONLINE @
proxibid.com and equipmentfacts.com

“Working hard NOW and staying SAFE for a BETTER future for your family.”

Bell Steel Buildings
 580-243-7345

Serving this area for more than 20 years!



ALL STEEL, ALL WELDED, CONCRETE FLOORS, PRIME 26-GUAGE SHEET METAL

RIFLES
SHOTGUNS
HANDGUNS
GUN SAFES
SCOPES
BINOCULARS
RANGE FINDERS

We stock a full range of outdoor equipment



WINCHESTER RIFLES AND SHOTGUNS
BROWNING

Hobart Farm & Garden HFG
 Hobart, Oklahoma

HOBART FARM & GARDEN
 580-726-3351 • 1030 S. Monroe, Hobart OK
 www.hobartfarmandgarden.com
 HOURS: M-F 8AM-5:30PM • SAT 8AM-NOON

Tree Services
 Keith's Tree Trimming, seasoned/green firewood available, Stock up before winter! 580-660-0402. 4/16



Cedar Tree clearing for Western Oklahoma, Call Daniel Adams 580-819-1532. 4/15

Berry Tree Service: trimming & removal, commercial/residential, including cemetery maintenance, free estimates. I am insured. 580-471-9235, Chris Berry 24/31

BR Fence Co., cutting pasture tress with Turbo saw, 580-210-9533. 24/19

FRANK'S TREE SERVICE
 Tree Trimming & Removal
 Stump Removal
 Yard & Farm Clean-up
580-821-6120


4/17

Holman Tree Service
 completely insured tree service - offering tree removal, trimming, pruning and stump removal at a reasonable price, call or text **580-715-0680 or 580-832-2098.**

tfc

Golf
ATTENTION GOLFERS: save mileage, money & time, best selection & prices in Western Oklahoma at Elk City Pro-Shop, most major brands, call 580-225-3556, monthly specials. 52/52

Motorcycles
 2005 Harley Ultra Classic touring bike, excellent condition, \$7,500, for more info call 405-542-7062. 4/17



2017 Harley Limited, 7500 miles, Black Quartz, No rides, No personal checks, \$20,500, 580-649-9705, Altus. Serious inquiries only. 4/17

INSULATED STEEL BUILDINGS

PORTABLE



Certified 90 MPH Wind Tested

- DOUBLE WALLED STEEL
- 1 3/4" POLYSTYRENE INSULATION
- 3/4" B-B TREATED PLYWOOD

Workshop, Cabin, Playhouse Office or Storage

PETZOLD BUILDINGS, LLC
 Manufactured and on display 1 mile north of Blair, Oklahoma on Hwy. 283 Lots also located in Wichita Falls and Lawton
Shop: 580-563-2818
Residence: 580-477-1499
 www.petzoldportables.com

Up. Down.

WHEN YOUR GARAGE DOOR WON'T GO UP OR DOWN

CALL 580-482-6369

FREE QUOTES



RED DIRT GARAGE DOORS LLC
 SERVING ALL OF WESTERN OK

“YOUR TOTAL SOLUTION PROVIDER FOR NEW & USED CONSTRUCTION EQUIPMENT”

OCT EQUIPMENT

HOURS:
 M-F 8AM-5PM
 Sat. 8AM-Noon

CASE CONSTRUCTION

FULL SERVICE & PARTS

CLINTON, OK
 1512 Neptune Dr.
 800-896-9378
 580-323-3422

OKLAHOMA CITY, OK
 7100 SW Third
 800-375-2273
 405-789-6812

TULSA, OK
 12210 E First
 800-375-1628
 918-437-5085

SPECIAL PRICING
 on new equipment in inventory



WE RENT EQUIPMENT



2013 Hitachi ZX 225



2020 Case CX60C

View Our Equipment Online www.octequipment.com

Ken Carpenter Auction Calendar

DENISE SCRIVNER ESTATE - ONLINE
Ends Thursday, April 21st - 9:00AM

MARGARETTE J. DENNY ESTATE-ONLINE
Ends Thursday, April 14th - 9:00AM

Need to liquidate your assets?
GIVE US A CALL!



View photos & details at kencarpenterauction.com

132 W. Hwy 152, Mustang, OK
405-620-1524

EL RENO STEEL
3399 E. HWY 66 - El Reno, OK
405-262-7077

WE NOW HAVE PORTABLE PANELS AND H-BRACES

- 1 1/4 PIPE GATES**
4 FT. - 6 FT. - 8 FT. - 10 FT.
12 FT. - 14 FT. - 16 FT. - 18 FT. - 20 FT.
 - 2 3/8 PIPE GATES (4-FT. TALL 5-RAIL)**
8 FT. - 10 FT. - 12 FT.
14 FT. - 16 FT. - 18 FT. - 20 FT.
 - 2 3/8 PIPE GATES (5-FT. TALL 6-RAIL)**
- CONTINUOUS FENCE**
- 2 3/8-IN. STRUCTURAL PIPE
 - 2 7/8-IN. STRUCTURAL PIPE

Angle Iron • Rebar • CEE Purlin • Channel • Beams • Sq. & Rec. Tubing • Expanded Metal • Pipe • Diamond Floor Plate • Plate • Sheets • Cable Clips • Cable Springs • Pipe Caps

METAL BUILDING PRODUCTS

LIPPARD AUCTIONEERS

FRI APR 15th 10AM
Live/Online

320± ACRES * GARFIELD COUNTY, OK
COVINGTON/GARBER AREA
CROPLAND * PASTURE * HUNTING
FISHING * RECREATIONAL * HIGHWAY
74 FRONTAGE * BUILD SITE
THE BILL AND BERNICE HUDSPETH TRUST AUCTION
N3030 Rd & Southgate Rd Garber OK
LippardAuctions.com 580-237-7174

FRI APR 15th 3PM
Live/Online

4.14± ACRES * ALFALFA COUNTY, OK
McWILLIE/ALINE AREA * HOME * SHOP
& OTHER BUILDINGS
ROBERT THOMPSON AUCTION
60242 Caddo Rd. Aline, OK.
LippardAuctions.com 580-237-7174

MON APR 18th 6PM
Online Only

Pickup, trailer, shop equipment, tools,
riding mower, antique pickup,
Robert Thompson Estate
60242 Caddo Rd. Aline, OK.
LippardAuctions.com 580-237-7174

WED APR 20th 6PM
Online Only

6 LOTS * ENID OK * VAN BUREN ST & W
OWEN K GARRIOTT RD INTERSECTION
Jim Hager Seller
Tract 1 502 Quincy St Enid OK
Tract 2 501 S Jackson St Enid OK
LippardAuctions.com 580-237-7174

THURS APR 21st 10AM
Live/Online

320± ACRES * GARFIELD COUNTY, OK
ENID/KREMLIN AREA * CROPLAND
PASTURE LAND * HUNTING
MILLER FAMILY AUCTION
Zaloudek Community Building (Corner of
Keowee & 30th St.), Kremlin, OK.
LippardAuctions.com 580-237-7174

THURS APR 21st 3PM
Live/Online

70± ACRES * GRANT COUNTY * NASH,
OK AREA GRASS PASTURE
CATHY GRIM AUCTION
78441 GREER RD, NASH, OK, 73761



Hay/Feed

BMR RD Bales, 5x6, would make great grinding hay, Guthrie Ok 405-760-4265. 1/15

Hay For Sale: Love grass, 4x5 round bales, good clean hay. 2021 season, \$45 per bale, Can load, located NW of Vici. Call 580-799-2596. If no answer leave message. 4/18

Large rounds Alfalfa, \$110, , Large rounds Bermuda \$120, Candadian, TX, 806-323-3303.

Net wrapped Crabgrass hay and beardless wheat, 4x6 bales, North of Weatherford, call 580-445-8163. 4/15

For Sale: Large round bales of rye straw. Tim 580-515-9894. 24/34

Two Bar W Farms, Custom Swathing and Baling, For Sale: Small squares Alfalfa or Bermuda in 21 bale bundles, Kelly 580-819-0664 Jason 580-819-3855. 24/30

Hay for sale: Bermuda grass round bales, Blue stem, & Alfalfa in round bales , Oats, Millet and Wheat hay round bales, Ted Thimling, 580-885-7278 or 580-254-1705. 52/44

Irrigated Midland 99 Bermuda grass, excellent horse quality, small square bales in 21 bale bundles, stored on pallets in the barn, weed-free, sticker-free, put upright, \$11.42/bale, 21 bale minimum, 5x6 round bales, same hay, \$130 each, Yukon, Ok 405-630-8710. 24/05


Midland 99 grass sprig-ging \$140/acre, total cost fsa will pay \$130/acre if you qualify, we start planting March 1, sprigs only \$2/bushel O.S.U. measurements, Randy Henson 806-669-8516, Tom Christner 316-617-4437, Wheeler, Tx. 20/17

Miscellaneous

Mattress Warehouse, 4719 W 3rd Elk City, quality mattresses at low prices, as always I pay your tax, if you need more info call Betty 580-821-0386. 4/18


3 point wood chipper, 1997 Dodge Ram 3500 4x4 grain bed and hoist, 580-938-1678. 4/18

15 pallets of Hydro stone (stone from the Hydro, Ok quarry). pallets are approx. 3ftx 3ftx 30in. high , must take all, price is negotiable, 580-799-1752, 580-497-2411. 4/17



ALL OUR FEEDS INCLUDE THE BEST VITAMIN/MINERAL PRE-MIX AVAILABLE

CREEP • GROWER STARTER • SHOW



Call for pricing 580-726-2120

FARM MACHINERY

CONSIGNMENT AUCTION

SATURDAY, April 23rd – 9:30 AM

AUCTION LOCATION: Intersection of 14th & Crider Road (3/4 mile East of United Supermarket or one mile North of Tractor Supply) in Cordell, OK (WATCH FOR SIGNS)



- TRACTORS/COMBINES/HEADERS**


 - 1-T9040 New Holland Tractor- 2900 Hours-One Owner-GPS-Weighted-Barn Kept-Extremely Nice
 - 1-John Deere 4450 Tractor – Loader & Bucket-One Owner-Very Nice- Well Maintained
 - 1-John Deere 4450 Tractor-Bucket & Spikes-GB High lift Loader-Joystick-Nice Tractor
 - 1-John Deere 7830 Tractor-Duals-Shuttle Shift-Power Reverser- Very Nice Tractor
 - 1-2005 Versatile 2360 Tractor-One Owner-Barn Kept-Dry Weighted-5200 Hours- Excellent Condition
 - 1-1952 Ford Tractor-With Shredder
 - 1-John Deere 9200 Tractor-3Pt-PTO-24Spd Partial Powershift-7,708 Hours-Very Nice
 - 1-John Deere 4640 GPS Monitor-SF1 Activation-Brand New-Neveer Installed
 - 1-John Deere 9870 Combine-Duals-4WD-ProDrive Transmission-Self Leveling Sieves-2,898 Separator Hours
 - 1-John Deere 6615 Tractor-740 Loader-ECM Showing 3,489 Hours-Joystick-Left Hand Reverser
 - 1-John Deere 7230 Tractor-4WD-John Deere Loader-Shuttle Shift-Very Nice
 - 1-John Deere 6430 Tractor-Loader-Shuttle Shift-4WD-Nice Tractor
 - 1-John Deere 8330 Tractor-4WD-IVT Transmission-Duals-Good Rubber-3Pt-PTO-Weighted-Very Nice
 - 1-New Holland 8670 Tractor-4x4-4,034 Hours-Loader-Joystick-Clean Tractor-Very Well Maintained
 - 1-John Deere 640 Flex Draper Header-Pickup Reel-Good Sections-Very Nice Head
 - 1-New Holland 9480 Tractor-4WD-Nice Tractor
 - 1-John Deere 4440 Tractor-with John Deere Loader-Good Rubber
- DRILLS / SWATHER / BALER / PLANTER**

 - 1-H&S High-Capacity Wheel Rake – 14 Wheel-Nice
 - 1-Great Plains Turbo Max Vertical till Disc 2400-26ft-Very Low Acres-One Owner-Like New
 - 1-John Deere 569 Hay Baler-One Owner-10,977 Bales-Nice Baler
 - 1-John Deere 569 Hay Baler-One Owner-Barn Kept-9,436 Bales-Very Nice
 - 1-John Deere 347 Square Baler-Less than 6,000 bales-Barn Kept-Very Lightly Used-Mint Condition
 - 1-2018 Case RB565 Baler-5x6-643 Original Bales-Net wrap/Twine-Mint Condition
 - John Deere 569 Baler-5x6-1,085 Original Bales-Barn Kept-Extremely Nice-Must See
 - 1-New Holland BR7090 Baler-One Owner-Barn Kept-13,000 Bales-Well Maintained
 - 2-John Deere 450 Drills-7.5 in spacing-with John Deere Factory Hitch
 - 1-2007 John Deere 1770 Max Emerge Plus Planter-12 Row-30in Spacing with Fertilizer & Precision Planting
 - 1-John Deere 4895 Swather-16Ft Header-Always Barn Kept-Perfect Condition-1,083 engine hours-819 Header hours
 - 1-John Deere Swather W235 with 500R Header-16 Ft Header-Starfire 3000 reciever with 2630 monitor-Superior tri-lobe steel conditioning rolls-864 engine hours-694 Header hours
- TILLAGE / SHREDDERS/SPRAYERS**

 - 1-Laney 17 Shank Ripper-Sub-soiler-Excellent Condition
 - 1-84Ft of 4 Bar Javorsky Spike Harrows
 - 1-John Deere 717 3Pt Shredder
 - 1-Moldboard-3Pt-4 Bottom
 - 1-Landoll 15Ft Disc-Never Been in the Ground-Stored Inside-Like New
 - 1-HX-15 John Deere Batwing Shredder
 - 1-Great Plains 8551 Cultivator-51ft-One Owner-Floating Hitch-Barn Kept-Excellent Shape
 - 1-27Ft Krause Chisel
 - 1-16Ft Single Fold Crust Buster Disc-Good Tires-Good Tires-23.5 in Disc
 - 1-Wylie Spray Wing II-Pull Behind Trailer-1250gal Tank-90ft Booms-Turf Tires-Inductor Cone-Raven 450 Monitor
 - 1-Krause 14Ft offset Disc
 - 1-Krause Shank 3Pt-Chisel Plow with Drag
 - 1-Big Ox 7 Shank-3Pt
 - 1-White 6 Bottom Semi Mount Mold Board
 - 1-Tool Bar-20ft with 9 shanks set on 30 in centimeters
 - 1-John Deere 3600-8 Bottom Moldboard
 - 1-27Ft Javorsky Cultivator-Nice
- TRUCKS / VEHICLES / TRAVEL TRAILER / ATV**

 - 1-1976 C-65 Wheat Truck-Hydro Augers-366 Engine
 - 1-1977 C-65 Wheat Truck-Hydro Augers-366 Engine
 - 1-1993 Freightliner Cabover-10spd-60 Series Detroit-Good Motor-Has Body Damage
 - 1-2019 Argo 8x8 Frontier-Only in water one time- Perfect Condition-750 Scout-Must See
 - 1-2013 Polaris Ranger Crew 800-Very Clean-2,805 Miles-372 Hours
 - 1-Polaris Ranger-Diesel-Good Shape-2,224 Miles-284 Hours
 - 1-2006 Sterling Day Cab Tandem Axle-Detroit-10spd-Clean Truck
 - 1-2021 Kubota X900-23 Hours-Diesel-Extremely Nice-Like New
 - 1-1997 International 4900-250gal Fuel Tank with Pump-11Ft Service Box-Tool Box-Nice-Showing 211,000 Miles
 - 1-Ruff and Tuff Electric Cart-4x4-Low Hours-Very Nice
 - 1-2016 Polaris Ranger 900-66 Hours-490 Miles-Full Cab-Electric Windows-Heat/AC-Like New
- TRAILERS/LIVESTOCK TRAILERS**

 - 1-2016 Eby 57 FT Aluminum Ground Load – One Owner-Very Nice
 - 1-32Ft W&W gooseneck Stock Trailer-32x68
 - 1-Car Trailer with Winch
 - 1-Aluminum Water Tank Trailer-40Ft-Nice Farm Trailer
 - 1-Donahue Equipment Trailer
 - 1-Gooseneck Stock Trailer-20x6
 - 1-48ft 1982 Flatbed Float Trailer-Good Farm Trailer
 - 1-45ft Neck over Ground Load-Very Nice Trailer-Lifetime Rubber Floor-Heavy Gates-(2) 25k Axles- No Rust- Good Tires
 - 1-Tanker Trailer-6500 Gallon Compartment-Baffles
 - 1-Lamar 24ft Trailer-7500lb Axles-Bumper Pull-1,000gal Center Bottom Gravity-Honda Pump with 3in Plumbing
 - 1-24Ft Gooseneck Trailer-7500lb Axles-Hydraulic Lift-Good Floor
 - 1-Gooseneck Stock Trailer-24x6
 - 1-Big Tex 18Ft Bumper Pull Trailer-Has Ramps
 - 1-20Ft 4Wheel Flatbed Trailer-Loaded with Guardrail
 - 1-24Ft 4Wheel Cotton Trailer
 - 1-8 Bale In Line EZ Haul Hay Trailer-Like New
 - 1-16Ft Javorsky Built Gooseneck Grain Trailer-with Rollover Tarp
- TERMS:** Cash or check with positive ID. All mdse sold "as is - where is". No prop removed from premises until paid for. Sales tax will be chgd unless tax permits are provided.



You may register to bid online at www.equipmentfacts.com or go to www.mxactionco.com for direct link. Buyer's premium applies to online buyers.

LIVE & ONLINE BIDDING AVAILABLE!

WE WILL BE ON TRACTORS AT 10:15am!!!

- RECREATION**
- 1-2016 Tracker Bass Boat-17Ft-115 HP Mercury-Less than 25 Hours-Barn Kept-Extremely Nice-Trolling Motor
- MISC**
- 20- H-Braces-4.5in Pipe-9Ft Tall
 - 1-Guard Rail-575Ft
 - 1-Anhydraus Side by Side Nurse Tank
 - 1-Sharpe 10Ft Box Blade- Nice
 - 80 Sheets of 9ft sheet metal
- LIVESTOCK EQUIPMENT**
- 1-Cattle Guard
 - 1-Tuff Toter Cube Wagon- 2 ton-3 years old
 - 1-Cattle Chute-Hydraulic Head Gate
 - 1-Priefert Squeeze Chute with Palpation Cage-Lightly Used-Very Nice
 - 1-Supreme 600 Feed Mixer-Single Auger
 - 1-3C 1500 Cake Box-New
 - 1-Priefert Squeeze Chute with Caddy

PUBLIC AUCTION

160 ACRES DEWEY COUNTY LAND

CULTIVATED & BERMUDA/NATIVE GRASS - BLACK TOP FRONTAGE

THURSDAY, APRIL 28, 2022 • 10 A.M.

WEST OF CANTON LAKE / EAST OF SEILING, OK

Sale Location: Canton Community Center, 301 N Garfield, Canton, OK

Legal Description: SE/4 Sec 9-T19N-R15WIM Dewey Co, OK. From Seiling, OK 7m East, 1/2 m South. From Canton Lake Big Bend, 6m West, 1m North, 4m West.

Evans
AUCTIONS LLC.
TOM EVANS JR.

VIEW FULL DETAILS AT
WWW.EVANSLANDAUCTIONS.COM

SELLER: CARPENTER
FAMILY & HEIRS

580.886.4040 | EVANSLANDAUCTIONS.COM

Personal

Wanted: Female companion, 60-75, spent your evening in good company with George 405-668-2075.

Plumbing

JOHNS PLUMBING

Serving Cordell, Clinton, Elk City, Weatherford and the surrounding areas.

580-660-5670

580-660-7190

Licensed • Bonded • Insured

Mobile Homes

To Be Moved - 2008 14'x70' OakCreek 3Bed 2Bath \$15,000 - 405-269-6942 for questions, pictures.

MOVE IN SPECIAL on Rentals and Owner Financing in Weatherford and Elk City, Call for Details 405-808-2556.

Mobile home for rent and owner finance, in Elk City and Weatherford, 405-808-2556. 4/17

Top Hand Mobile Home Movers L.L.C.



580-515-4818



ELK CITY STORAGE 580-799-0197
104 Shannon Drive, Elk City, OK

GOBER Post Frame Buildings

Shops, Garages, Houses, Agriculture, Commercial

1-405-595-0770

30'x40'x10' - \$20,400

30'x40'x12' - \$22,600

30'x50'x10' - \$24,600

30'x50'x12' - \$26,700

With 4" Concrete, Fully Insulated, 1 Commercial Overhead, 1 Entry Door, #1 29 Ga. 40 yr. Painted Metal, Built on Your Level Site, Additional Sizes Available Mileage or Higher Concrete

Protect Your Home And Property!!! Prices May Apply

Make Sure Your Contractor is Following The Law.

Ask For General Liability and Workers Comp. Insurance

www.goberconstruction.com

Clinton Home & Personal Property For Sale — 1218 Wilson Ave.

Preview 4/10 @2:00 pm & 4/14 @ 6:00 pm

3 bed, 1.5 bath, 1,468 s/f

Furniture, Antiques, Freezer, Refrigerator, Stove, Washer, Dryer, Fiestaware, Pfaltzgraff, Harlequin Novels, Household Goods and Much More!



Visit HeardAuction.Hibid.com for full terms. Franchise office is independently owned and operated.

Online Auction
1218 Wilson Ave
Clinton OK

April 26

6:00 pm

HeardAuction.Hibid.com
580-323-6120



Heard Auction & Real Estate

SMITH & COMPANY'S AUCTION CALENDAR

SPRING CONSIGNMENT AUCTION

Saturday, April 16th 10 a.m.

Smith & Co. Auction Facility, 10762 US Hwy 412, Mooreland, OK

Preview Items: April 4th – 16th 9 am - 5 pm

Load Out: April 18th – 22nd 9 am – 5 pm

*On-Line bidding is available on ALL items. However, there is a number of items (too many to list) that will be offered on-line ONLY and not in the live auction. A complete catalog is available at www.smithcoauctions.com. To bid, please register for the On-Line Only Auction. Bidding begins NOW and will begin to Conclude at 2 p.m. on April 17th. *

Tractors, Pick-ups, 4 Wheelers, Campers, Dozer, Brush Beaters, Implements, HD Cattle Panels, Stock Trailers, Utility Trailers, Cars, Wood Working Equipment, Guns, Cattle Chutes, Enclosed Trailer, Skid Steer Attachments, Cake Feeder, H Braces & MORE!

Items added daily! View Pictures & Catalog at smithcoauctions.com

LAND AUCTION

Wednesday, April 27th 10 a.m.

Auction Location: Mutual Community Building, Mutual OK

Property Driving Directions: County Road 56 & NS 220 (Lenora Blacktop) off Highway 270 From Woodward Travel 22 miles SE on Hwy 270 then one mile south on County Road EW55. From Mutual Travel 5 miles east on Blacktop CR 54 and 2 miles south on Blacktop CR 220.

This is a good 160± acres of land, starting with good five wire fences.

There are 118± acres of cropland with the balance in native grass, trees and a pond. There are several home sites along blacktop frontage NS220 (Lenora Blacktop) and county road access on the north side as well as the east. The farm ground is fenced separate from the grass and the deer hunting potential is excellent.

Seller: Butts Family Trust

LAND AUCTION

Friday, May 6th 10 a.m.

West of Seiling, OK

Location: From Seiling, OK go west on Highway 60 1.5 miles to Highway 183 then south on Highway 183 1 mile then west 2 miles on County Road 61.

Legal Description: 100 acres m/l W/2 NE/4 NW/4 W/2 NW/4 of Section 14 T19N R17WIM.

100± acres of good land with some cropland and the balance in native grass. A creek bed is on the west side of the property and a beautiful overlook draw to the west that would make an impressive place to build a home. There is an older home with electricity and a water well and blacktop county road frontage. The wind revenue will sell with the farm and is currently paying approx. \$5000/per year with only 5 years in production.

Seller: Burchett Heirs

ESTATE AUCTION

Saturday, May 21st 10 a.m.

Auction Location: 52176 S. CR 217 Mutual, OK

Selling a Home on 80 Acres with Buildings and an Irrigation Well, a 4-Acre Tract of Land, and 1,200 Acres of Grassland with River. Also Selling- Tractor, Trailers, Riding Mowers, Tools & Furniture! More info. Forth coming!

Seller: The Harold B. and Sony Griffith Revocable Trust



www.SmithCoAuctions.com
580-254-3975

PUBLIC AUCTION

Saturday,
April 30, 2022
10:00 a.m.

Nice 3 Bedroom, 2 1/2 Bath Brick Home on 3.42 Acres • Cheyenne, OK

SALE & PROPERTY LOCATION: Cheyenne, OK at the Intersection of Hwy. 47 (Broadway) & Hwy. 283 (LL Males Ave) go 1 1/4 mile South on Hwy. 283 to EW RM 098 County Rd. (Water Plant Road) then 1/10-mile West to driveway and North.

Open House: Sunday, April 17 from 2:00 to 4:00 p.m. and Sunday, April 24 from 2:00 to 4:00 p.m.

AUCTIONEER'S STATEMENT: A family looking for that perfect location just on the edge of Cheyenne, OK - This is the one for you. Nice Brick home, two shop buildings and small acreage and close to school and downtown. Don't Miss This Sale!!!



LEGAL & PROPERTY DESCRIPTION: A 3.42 acre tract of land in the S 908.74 feet of the W/2 of the SW/4 Described as follows: Beginning at a point 40 feet West and 198.75 feet North of the SE Corner W/2 of the SW/4, Then North 710 feet, West 210 feet, South 710 feet then East 210 feet to point of beginning in Section 17, Township 13 North, Range 23 West, I.M. Roger Mills County, Oklahoma. Selling surface rights only.

This acreage has an exceptionally spacious Lubbock brick home with approximately 2,146 sq. ft. living area. It has 3 bedrooms, 2 1/2 bathrooms, large living room with gas fireplace flanked by bookshelves with bottom storage cabinets. The kitchen has center island with eating space, dishwasher, cooking stove, refrigerator, plenty of cabinet and counter space and just off the kitchen is the utility and access to outside entry to the carport. The master bedroom has a large walk-in closet, master bath with jacuzzi tub, separate oversized shower, and double lavatories, also the two additional bedrooms have walk-in closets, single lavatories and jack & jill style bathroom. This home has central heat & air, Rainsoft water treatment system, attached 21' x 24' carport, cellar, two water heaters, carpet and tile flooring and gutters on carport and house, city water and septic system. This acreage also has two 20' x 40' metal frame buildings, one has a 20' x 20' art studio with laminate wood flooring, a Wallmaster Cooler/Heater Unit, and a 20' x 20' Shop/Garage room with a 9' x 10' overhead door, this building has concrete floor and is insulated. The second metal shop building has concrete floor and a 10' x 10' overhead door and a walk-through door.

REAL ESTATE TERMS: A non-refundable 10% of purchase price to be placed in escrow day of sale. Purchaser' attorney will have 10 days to examine title. Balance of purchase price to be due and payable upon acceptance of title. All 2021 and prior taxes will be paid by the seller. 2022 taxes will be prorated. Possession will be at closing. All property is sold "as is where is." Auction is not contingent upon buyer securing or obtaining financing.

FURNITURE ALSO SELLING: Sofa w/End Recliners – Sofa Table – Coffee Table & End Table

PERSONAL PROPERTY TERMS: Cash, Visa, MasterCard or Personal Check.

OWNER: SUE SUTTLE

SCAN QR CODE FOR MORE INFORMATION



Grant's Auction & Realty

580-225-0269 • "The Complete Liquidation Professionals"

Cindy Grant
Cashier/Real Estate Broker
Elk City, OK
Mobile: 821-1738

FIND US ON THE WEB AT
www.grantsauction.com

Johnny Grant 1926-2010

Jeremy Justus
Auctioneer

Monte Tucker
Auctioneer & Sales Associate
Sunny Point, America
(580) 515-4477



ANY ANNOUNCEMENTS MADE DAY OF SALE SUPERSEDE ALL PREVIOUS WRITTEN OR ORAL STATEMENTS.

AMARILLO HORSE SALES

SALE 2ND SATURDAY EACH MONTH
TACK SALE 10AM - HORSE SALE 1PM

- No Consignment Fee
- Barn Rider Available
- Buyers & Sellers Market
- Online & Phone Bidding

FACEBOOK:
Amarillo Horse Sales



- Riding Horses First, Loose Horses to Follow
 - On-site Coggins Available
 - Horse Transportation Available To & From Sale
- Contact Ty or Bill Tom

CONTACT: Ty Hays (806)206-5440
or Bill Tom Flemming (806)654-5340

Amarillo Livestock Auction Barn
100 S. Manhattan St., Amarillo, TX 79104



ROTHER BROS., INC

HWY 183 NORTH, CLINTON, OK • 580-323-1981 • WWW.ROTHERBROS.COM

Boats

2016 17ft tracker pro guide, v-175, deep-v aluminum mercury 115, 4stroke, 55lb thrust trolling motor, in new condition, motor has approx 20hrs \$21,500, 580-515-9048. 4/15

Real Estate



Restaurant in lake town for sale (Canton, OK). \$125,000 OBO Established in 2014, still open and operating you can buy it today and start making money, owner has teenager that is involved in several activities and would like to sale to have more time to be home and at his events, comes with building and everything inside, all offers will be considered, call Nicole 580-886-4642. 4/16



Country Living! This spacious 3 bed/2 bath home sits on 1.2 acres at 12636 N. 1980 Rd. Carter, OK. This home features an open concept, many upgrades, and a unique upper and lower deck. Not to mention there is a 20x20 shop as well as a 30x50 shop! Call today for your private showing. Jamie Swartwood, RE/MAX All American Realty, 580-504-9298 - leave voicemail if not able to answer. 4/15

XIT

UPCOMING AUCTIONS

Real Estate • Farm Equipment • Heavy Equipment • Your Auction

MR. ALBERT KORFMAN RETIREMENT AUCTION

SATURDAY, APRIL 30, 2022 • 10AM

DIRECTIONS: Go North of Arapaho, Oklahoma on Highway 183 to CR 880 Then West 3 Miles Then South 1/4 Mile on CR 2230.

TRACTORS - John Deere 4640 Cab, Air, Duals, 3pt and Remotes, Quad Trans. (2 Speed Issues) 20.8" Rubber; John Deere 4430 Cab, Air, Duals, 3pt and Remotes, Quad Trans. 38" Rubber; John Deere 4020 Console Diesel, 3pt and Remotes, Syncro Trans with Deere 158 Loader; John Deere 4020 LP, 3pt and Remotes, Syncro Trans, New Tires with Deere 158 Loader

HAY AND FARM MACHINERY - John Deere 569 Mega Wide Plus- Like New 1,000 Bales Barn Kept; John Deere 535 Round Baler Barn Kept; John Deere 640 Hay Rake;

John Deere 1380 Swather, Center Pivot; 2- John Deere 8350 Grain Drills 16x8 Single Disc (Sell Separately); John Deere 8350 Grain Drill 20x8 Double Disc ; Javorsky 27ft Field Cultivator, Hyd Fold.; Sunflower #1321 Offset Disc 16ft Single Fold, Rock Flex; Schaffer 12ft Offset Disc Hyd. Lift.; Porky 8ft Dozer Blade for 4020 Tractor; Noble 26ft Field Cultivator, Hyd. Fold; Krause 12 Shank Chisel Plow, Hyd Lift; John Deere #400 Rotary Hoe, 4 Row; John Deere 95 Combine Barn Kept and Head

TRAILERS AND TRUCKS: 2000 Chevrolet Ext Cab 1500 Pickup; 1972 Chevrolet C50 Grain Truck - Clean ; 1967 Chevrolet C60 Grain Truck New Rear Tires; 2009 GR Gooseneck Stock Trailer 7x16 Tandem Axel (Like New) Barn Kept; EZ Haul Round Bale Trailer- Gooseneck 6 Bale- Nice; 2- 16ft Bumper Pull Livestock ; 2- Pickup Bed Trailers; 2- 12ft Utility Trailers; 2- 500 Gal Diesel Tanks on Trailers; 2- Overhead Fuel Tanks; 250-Gal LP Tank

2 - Trailer Loads of Shop Tools and Supplies, 2-Generators

OFFSITE EQUIPMENT: White G955 Tractor - NOT RUNNING; John Deere 730 LP and Loader - NOT RUNNING; Schaffer 10 Offset - Needs Repairs; 10 Land Blade- Hyd Lift; 2- Bulk Cattle Feeders; Bar 6 Cake Feeder; 16ft Bumper Trailer; 14ft Enclosed Trailer; Calf Cradle; Squeeze Chute; 16' Cattle Guard 2- 500 Gal LP Tanks, 250-Gal LP Tank

PICS/DETAILS AT XITACTIONS.COM OR CONTACT AUBREY LATHAM FOR INFO 580-393-4440

WASHITA COUNTY REAL ESTATE AUCTION

SATURDAY, MAY 14, 2022 • 10AM

Sellers: Finnell Trust

BEAUTIFUL BRICK HOME: 80 Acres +/- Good Bermuda Grass, 3 Barns, 3 Bins.

(1983) Brick Home, 3,112 Sqft. 4 Bedroom, 3 Bath, 2 Car Garage. Rural Water and Water Well. Address: 11291 N. 2050 Road Elk City, Okla. (Corner of E1130 and N2050).

Shown By Appointment Only.

Legal: S/2 SE/4 32-11-20 Washita County, Oklahoma- 80 Acres +/-

FARM AND LIVESTOCK EQUIPMENT: John Deere 6200 MFWD Tractor and Loader-Cab and Air; John Deere 4610 MFWD Tractor and Loader; John Deere 5020 Tractor; John Deere 750 No-Till Drill -15ft; John Deere 8300 Grain Drill 20x8 SD; IHC 5300 Grain Drill- IHC 5100 Grain Drill; John Deere 3100 Moldboard Plow 5 Bottom; Rhino 15ft Folding Shredder; Rhino 6ft 3pt Shredder; 2- 6 Row Rotary Hoe's 400 Series; John Deere 4 Bottom Plow- 3pt; Sunflower 22ft Disc; Krause 14ft Offset Disc; John Deere 14ft Chisel Plow; Danuser Post Hole Digger; Herd 3pt Spreader; Neckover 6-8x 24 Gooseneck Stock Trailer- Nice; WW 16ft Stock Trailer; WW 16ft Flat Bed Trailer; 2 Trailer Loads of Farm Supplies

AUCTION BEGINS 10AM starting with Household & Furniture; Farm Equipment; Trailers
REAL ESTATE WILL SELL AT 12 NOON.

PICS/DETAILS AT XITACTIONS.COM OR CONTACT AUBREY LATHAM FOR INFO 580-393-4440

FARM EQUIPMENT AUCTION

SATURDAY, MAY 28, 2022 • 10AM

Carter, Okla.

SELLERS: Noble Coy Estate

HIGH QUALITY FARM EQUIPMENT AUCTION

DATE CHANGED TO

SATURDAY, AUGUST 27, 2022 • 10AM

Altus, OK - (Veteran's Drive and Hwy 62) -Go 7 Miles East on Hwy 62 to N2130 Rd then, North 2 Miles to E1620 Rd then, West 1/4 Mile to Sale Site. Watch for Signs. Visual Inspection Only Daylight Hours.

Full inspection Week of Auction. Contact Aubrey Latham, Auctioneer 580-393-4440

**EQUIPMENT INCLUDES 29 LOTS OF HIGH QUALITY FARM EQUIPMENT
(SEE PICS ON Proxibid.com or xitauctions.com)**

PICS/DETAILS AT XITACTIONS.COM OR CONTACT AUBREY LATHAM FOR INFO 580-393-4440

HOME IN SENTINEL, OK FOR SALE

306 South Third Street, Sentinel, Okla. with 3 Lots - Asking \$39,500

SELLERS: Assembly of God

CONTACT AUBREY LATHAM, AUCTIONEER FOR MORE INFORMATION 580-393-4440

www.xitauctions.com

AUBREY LATHAM, AUCTIONEER • 580-393-4440, SENTINEL, OK

DANIEL ROGERS, AUCTIONEER • 580-471-3824, LONE WOLF, OK

SHANE FULLERTON, SALES • 580-641-2004 MARLOW, OK

LICENSED IN OKLAHOMA & TEXAS - OK RE #150319 TX LIC #10620

STREET FARM & RANCH, BROKER • 806-292-9944, BRADLEY, OK - LIC#201036

LAND AUCTION

Washita County, OK

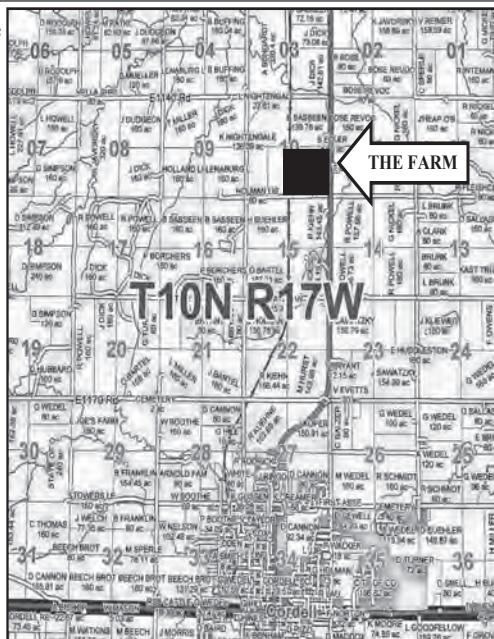
131 ACRES

FRIDAY, APRIL 29, 2022 - 10:00 am

AUCTION LOCATION: From stop light in Cordell, go approx 4.4 miles North on Hwy 183, This will be the SE corner of the farm. The farm lays on the West side of highway.

Legal Description: Surface and surface rights only: The SE/4 of 10-10-17 WIM, less and except highway right-of-ways, railroad right-of-ways, and less the South 12 acres of the East half of 10-10-17 WIM, Washita Co, OK containing 131.05 acres MOL

About The Farm: This highly productive farm contains 131.05 acres MOL. According to FSA records, the farm has 82.18 acres cropland with the balance being grass. Bases for the farm are 79.9 acres wheat with a 31 bushel yield. The farm has rural water and a nice steel fence surrounds the property. This farm lays well and has Highway 183 frontage. This would make a nice addition to anyone's farming or cattle operation. Anyone looking for a good farm close to Cordell or Bessie will want to be with us on sale day!



Terms: 10% of sale price of real estate is due on the day of the sale with remainder due at closing. Taxes will be prorated at closing. Possession on grass will be Jan 1, 2023. Possession of the cultivated ground will be no later than Sept 1, 2022 provided it has closed.

OWNER: ADELE I. JACK REVOCABLE TRUST



ROBERT PUTMAN
Auctioneer/Broker

WENDY PUTMAN
Cashier

"Service is our Strength"

1409 Pheasant Run - Cordell, Oklahoma 73632
(580) 832-5714 Cell # (580) 660-1149 or (580) 660-0752
email: putmanauction@att.net
website: www.putmanauction.com



Any announcements made day of sale supersedes all written announcements. Not responsible for accidents.



Heard Auction & Real Estate

CLINTON, OK HOME FOR SALE
1218 WILSON AVE.
3 BED, 1.5 BATH, 1,468 SQ. FT
STORM SHELTER, CORNER LOT
ONLINE AUCTION – ENDS APRIL 26TH
FIESTAWARE, PFALTZGRAFF
DUNCAN PHYFE TABLES
NEW & ANTIQUE FURNITURE,
APPLIANCES, KITCHENWARE & MORE
ONLINE AUCTION- ENDS APRIL 26TH

HeardAuction.com • 580-323-6120
 3200 W. Modelle • Clinton, OK

Automobiles

2006 2 door jeep, 2003
Holiday Rambler die-
sel pusher, 580-383-
7777. 4/17

2011 Hyundai Accent,
good gas mileage,
\$4,500, 580-318-7221.
4/16

2019 Ford Edge Tita-
nium, loaded, 33,000
miles, older female
owner, garage kept,
\$32,000, text 580-309-
1389. 4/15

1995 F250 XL, brown,
2-door, 5 spd trans.,
spike bed, engine over-
hauled 45,000 miles
ago, \$4,250 obo, Hen-
nessey OK, 580-334-
2612. 4/15

Top Dollar Paid for un-
wanted vehicles, no title
no problem free towing
Altus's and Lawton ar-
eas. Call Doug 580-483-
5985. 13/22

Farm Equipment

2000 JD 566 Round Baler,
10,960 bales, been thru
JD shop, shedded, net
and twine, great shape
mechanically, Leedey,
\$12,500, 580-821-4811.
2/16

Like brand new 8 ton
Doyle MFG fertilizer
and lime spreader with
hyd spinners and en-
gage, \$20,000, 580-574-
5375. 4/17



Sub soiler plow, \$3,000,
Ripper plow, \$3,000,
tires in good condition,
Texola area, 806-256-
3781. 4/15

John Deere 4895
Swather, 2700 HRS,
18 FT sickle head-
er with new sections/
drives, steel condition-
ers, \$32,000, Sentinel,
OKLA. 580-393-1301.
4/16

JD 500 grain cart, ex-
cellent paint and tires,
\$6,800, 580-445-8657.
4/15

WANT TO BUY: John
Deere tractors, running
or not, 580-243-8610.
52/1

Wanted: Tractors dead or
running, 2WD or 4WD,
any kind, any size up to
2020 models, 405-641-
7728. 26/26

WANTED: JD SQUARE
BALERS, 348-346-336-
224-214 any condition,
405-641-7728. 29/26

T&S trip feeder 1500#
with tarp and controls
no rust and works great
. \$2000, please text me at
405-659-2677, Thxs 4/50

For Rent



Commercial building
4,000 sq ft, 2 acre lot
with two over head shop
doors 1531 South 14 Clin-
ton, Contact Kathy Boone
580-445-8761, very rea-
sonable rent. 4/15

3 bedroom, 2 bath, in
Burnsflat, single home,
new LED lights, carpet
and paint, fenced back-
yard, stove and dish-
washer in unit, \$580/
month, 580-243-8702. 4/15



• **Edwin “Eddy” Schacher Estate – Owner**
10AM Sat., April 23rd,
17 Miles west of Tulia, TX. on HWY 86
 • **Shelby L. Robinson Construction Co. Inc.**
(Retirement Auction)
10AM Sat., April 30th,
NE of Amarillo, TX

Five Star Auctioneers

P.O.Box 1030 Plainview, Texas 79073-1030

Jim Sumners (806) 292-2149 Jimmy Reeves (806) 774-2684
Donna Todd (806) 292-1990 License #10006

Full listings @ 5StarAuctioneers.com

640 Acres + (Surface Rights Only)
Jackson County, Oklahoma

Land Auction

Sat., April 30, 2022 • 10:15 a.m.

AUCTION LOCATION: All 4 Tracts will sold
from the Altus City Gymnasium
(Sold in 4 separate Tracts)
601 E. Katy Drive • Altus, Oklahoma

TRACT #1: SE ¼ - 11 - 1N 20 WIM
TRACT #2: NE ¼ - 14 - 1N 20 WIM
TRACT #3: SE ¼ - 14 - 1N 20 WIM
TRACT #4: NE ¼ - 23 - 2N 21 WIM

Heirs of Coy & Ruby Grimes, Owner



TERRY H. BRINK, Auctioneer
Frederick, Oklahoma 73542
Mob.: 580/335-4126
Lic. #OKS-118-006033
www.brinkauction.com

We've been

BUILDING THE BEST SINCE '76

THE NEW BD7600 BOX DRILL



Introducing the new BD7600 Series Box Drills – with legendary durability and performance.

- NEW feeder cups meter by speed, adjusting for different application rates by changing the meter wheel rpm
- NEW box design and structure demonstrate industry-leading durability and flexibility
- The disc blade coulters are offset with alternating leading edges to enhance stability and reduce side-shifting
- Optional hydraulic drive reduces moving parts for easy operation



"Harvest Starts Here."



26' 2-Section

30' 3-Section

40' 3-Section

Visit your local Great Plains dealer or visit www.GreatPlainsAg.com to learn more.

ROTHER BROS., INC

HWY 183 NORTH, CLINTON, OK • 580-323-1981 • WWW.ROTHERBROS.COM

©GREAT PLAINS MFG., INC. 2123/GPM

FARMS FOR SALE

FARM #1

Located from Corn, 1 Mile East
& 3 Miles North
From Weatherford 2 Miles West
& 7 Miles South

NW 1/4 of Sec. 23-T11N-R15, W.I.M.,
Washita County, OK

160 ac. MOL. Surface Rights Only

Approx. 140 Ac. Cropland
(Presently in very good Grass)
Approx. 20 Ac. Native Grass
Pasture

60 x 30 Barn with a 30 x 30 Shed
Electricity
Water Well

\$ 2,500 per ac.

FARM #2

Located from Hwy. 54 & I-40
Jct. - 2 Miles West then 6 1/2
Miles South of Weatherford

SW ¼ of Sec. 14-T11N-R15, W.I.M.,
Washita County, OK. 160 acres
MOL. Surface rights only.

160 Ac. Grass & Cropland

Approx. 107 Ac. Cropland
Approx. 50 Ac. Gras Pasture

Electricity
Water Well
Good Fence w/ "T" posts

\$ 3,400 per ac.

Both Farms Have Very Good
Established Grass with the
opportunity of being a great home
building sites !!!!

Pictures & Info: hinzauction.com
FB/hinzauction

FOR MORE INFORMATION
CONTACT: HINZ AUCTIONEERS

Brandon Hinz: 580.774.7396
OK Brokers # 151996
Jimmie Hinz: 580.774.4644
OK Brokers # 66690
Jim Hinz: 580.774.2619
Ok Brokers # 015232

Real Estate Auction

SPECIAL BRICK 3 BEDROOM HOUSE IN TALOGA
& 2 ACREAGES CLOSE TO TALOGA

SATURDAY, APRIL 30, 2022 • 10:00 A.M.

SALE LOCATION: 315 West Primrose Avenue, Taloga, Oklahoma

AUCTIONEER'S STATEMENT: It is a privilege to conduct the auction of these special properties at Taloga, Okla. All 3 properties are close to the Taloga Public Schools. We invite you to this special auction.

TRACT 1: 315 W. Primrose Avenue, Taloga, Okla. (Surface Only)

Property Description: This property is a one story brick 1,912 Square Foot House with a 2 car garage that includes a kitchen & dining area, living room, 3 bedrooms, 2.5 bathrooms, & a utility room. The house has central heat and air conditioning and is on city utilities. This property would be a good place to call "Home".

TRACT 2: 310 W. Primrose Ave., Taloga, Okla. (Surface Only)

Property Description: This property includes 2.00 Acres in SW/4 of Section 13, Township 18 North, Range 17 W.I.M., Dewey County, Oklahoma with an older house located on the property.

TRACT 3: 405 South Wesley, Taloga, Okla. (Surface Only)

Property Description: This property includes 4.00 Acres in SW/4 of Section 13, Township 18 North, Range 17 W.I.M., Dewey County, Oklahoma with old house used as storage.

REAL ESTATE TERMS: 15% of the purchase price will be placed in escrow day of sale. Property will be conveyed by Warranty Deed. Possession will be at closing.

All measurements are approximate.

BROKER PARTICIPATION INVITED:

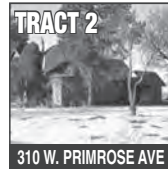
Brokers must pre-register client 48 hours in advance of auction.

OPEN HOUSE

Sunday, April 17 and 24, 2022 from 1:00 to 3:00 p.m. or by appointment 580-225-6743



315 W. PRIMROSE AVE



310 W. PRIMROSE AVE



405 S. WESLEY

SELLER: GLENN KARL WEST ESTATE

Gene Cobb Auction & Realty

Richard E. Cobb, CAI, AARE • Auctioneer/Real Estate Broker • Certified Appraiser

'99 F350 & 3 Axle Trailer



Ford: 4wd, automatic, 7.3 diesel, rebuilt, \$11,500;
Portable Building Moving Trailer: 3 axles,
3,500 lbs. each, 24,000 lb. winch, will haul up to
12'x20' building, \$4,000; or \$15,000 for both obo

Call 580-571-7410

LEWIS
Cattle Oiler Co.

Proven Effective Treatment All Year Long



Eliminate stress from flies, lice and other parasites
Improve rate of gain
Improves overall health of herd

Mike Nesmith
Elk City, Oklahoma
580-303-8770

Dogs/Cats/Pet

ASDR AUSTRALIAN SHEPHERD PUPPIES!!! all colors, shots, wormed, vet checked \$500-\$800. 580-744-0234
2 Free (rescue) dogs to good home - mixed breeds, 1 medium, 1 large great dane mix, shots current, friendly, approx. 2 years old. We can't give them the attention they need. Please call/text 580-660-0336, located in Weatherford.

22 ft Granbin Gazebo, 30 ft tulivator, 14 offset disc, 15ft sweep plow, 19ft double fold chisel, All Cheap Kingfisher, OK 405-368-8943. 1/15

ASDR Tiny Toy Aussie, Red Tri Male, 2 Red Tri Females, \$800 CASH, 580-302-3646. 4/17

AKC Daschunds (weenie dogs) raised inside our home, p.o.p, s/w, pre-pooled in every way, \$700, 580-660-4050, 580-660-0431. 4/17



F2 standard Goldendoodle puppies for sale! Text me at 580-374-5364.

Great Pyrenees puppies for sale, 8 weeks old, shots, mother and father on premises with goats, 806-334-0005. 4/17

Baby bunnies available, text 580-445-0498 for more information. 4/16
Labordoodle puppies! 5 males, 1 female (Black and Apricot in color), For more information call or text 580-334-3106. 4/15

AKC male dachshund puppies, ready for their furever home, 580-727-5326, Buffalo. 4/15

Auctions

Check out XIT Auction calendar in this week's publication! 4/16

Trailers

16ft car hauling trailer, good shape, new tires, 580-774-8445. 4/16

1986 39' Mate end dump rock trailer, good shape, \$15,500, 405-313-1671. 4/16

EZ HAUL IN LINE ROUND BALE TRAILERS

Price Before
You Buy
Delivery
Options
Available

Many
Sizes In
Stock!

BALE BUGGY

Mike Nemec
580-336-7894
Grady Parmley
580-336-7004



OKLAHOMA ARTHRITIS CENTER



Tosha Redd
APRN-CNP
Elk City, OK



Kelsey Landon
PA-C
Enid, OK



Chad Schroeder
PA-C
Enid, OK

We specialize in the diagnosis and treatment of patients with rheumatology and autoimmune disorders.

Our Team Provides....

- Safe, convenient, and cost effective solutions for infusion and injection patients
- Highly skilled nursing team trained and ready for complex health conditions
- Experienced medical providers overseeing infusion services
- Personalized care plans that focus on the best possible health outcomes for each patient



**OKLAHOMA
INFUSION SERVICES**

Request an appointment at okarthrititis.com

- 2 locations to serve you -

2406 Bell Ave., Elk City, OK • 580-303-7944
825 E. Owen K. Garriott Rd. Enid, OK • 580-701-2586

2-D Trailer Sales & Service

Full Line of Trailers & Truck Accessories



**14-FT GOOSENECK
BAR TOP TRAILER**



MANY PRE-OWNED UTILITY TRAILERS
Several Lengths to Choose From!



**24-FT GR 3/4 TOP
STOCK TRAILER**



**HORSE, CATTLE &
UTILITY TRAILERS**

**Butler Spike & Arm Beds • Crown Line Beds • Cargo Craft
B&W Trailer Hitches • GR Trailers • CM Trailers & Beds**

TRAILER PARTS, SERVICE & REPAIR

535 S 4th ST, CLINTON • 580-323-3999 • www.2dtrailers.com

#1 Import Service Department from Amarillo to OKC

OIL CHANGES
BRAKE JOBS
TRANS FLUSHES

WINDY

NISSAN

FREE DELIVERY

Anywhere in Oklahoma!

TIRE ROTATIONS
FULL DETAILS
ACCESSORIES

Financing Available!

Top Dollar Trade-In!

114 Access Rd, Elk City OK | 580-225-4500 | www.WindyNissan.com



2015 NISSAN MURANO S
28 MPG HWY, front buckets, cargo protector
\$16,500



2017 DODGE JOURNEY SE
25 MPG HWY, touch screen, keyless entry
\$16,624



2018 KIA OPTIMA LX
36 MPG Hwy, Remote Keyless Entry
\$18,493



2022 NISSAN MURANO S
Push Button Start, Bluetooth, Rear View
\$34,220



2014 NISSAN XTERRA S
22 MPG HWY, Bluetooth, value package
\$18,000



2022 NISSAN ALTIMA SR
37 MPG Hwy, Apple CarPlay, Remote Start
\$28,050



2022 NISSAN FRONTIER SV
King Cab, Tech Pkg, Convenience Pkg.
\$35,885



2022 NISSAN FRONTIER
Crew Cab, SV, Sport Bar, Off-Road Steps
\$40,215



2022 NISSAN TITAN
Crew Cab, Pro-4X, Off-Road Shocks, NAV
\$58,670



2022 NISSAN TITAN
Crew Cab, Pro-4X, LED Lights
\$55,580



2022 NISSAN FRONTIER SV
Crew Cab, 24 MPG Hwy, Power Options
\$33,285



2015 CHEVROLET CAMARO 1LT
30 MPG HWY, back up camera, brake assist
\$23,697

FREE
ROTATES &
PATCHES
WHEN YOU BUY
A SET OF TIRES



2022 NISSAN MURANO
\$500 off msrp*

2022 NISSAN FRONTIER
\$500 off msrp*

2022 NISSAN TITAN
\$2,000 off msrp*

*See Dealer for Details.

FREE
“QUIK” VIDEO
MULTI-POINT
INSPECTION
& TIRE
ROTATION
W/ OIL CHANGE



2018 HYUNDAI ELANTRA SEL
37 MPG HWY, blind spot detection, lane assist
\$21,126



2022 NISSAN FRONTIER SV
Crew Cab, 24 MPG Hwy, Apple CarPlay
\$33,335



2022 NISSAN FRONTIER SV
Crew Cab, 24 MPG Hwy, 9-Sp Auto
\$33,335



2016 JEEP RENEGADE LATITUDE
29 MPG HWY, back up camera, roof rack
\$18,830



2014 FORD EXPEDITION EL LIMITED
18 MPG HWY, power lift gate, sound system
\$21,791



2022 NISSAN ROGUE SPORT
32 MPG Hwy, Blind Spot, High Beam Assist
\$26,310



2022 NISSAN ALTIMA SR
37MPY Hwy, Blind Spot, Midnight Edition
\$31,999



2020 DODGE GRAND CARAVAN GT
25 MPG Hwy, Brake Assist, Heated Seats
\$28,616

NO REASONABLE OFFER TURNED DOWN! WE WANT YOUR BUSINESS!